

QUILL^{A_ND} BLADE

1936



The

QUILL & BLADE

1936

The QUILL



J.K.

COMPILED AND EDITED
FOR
THE STUDENTS AND PATRONS OF
THE LEW WALLACE HIGH SCHOOL, GARY,
INDIANA, BY THE JUNIOR AND SENIOR CLASSES.

and BLADE

and BITE

TO
CATCH
THE SHAD-
OWS OF THE
EVER CHANGING
DESIGN OF •
HIGH SCHOOL
LIFE AND TO
FIX THEM INTO
PERMANENT FORM;
TO REFLECT THE •
DIVERSIFIED AND CHAR-
ACTERISTIC INTERESTS
OF STUDENTS AT • • •
WORK, STUDY, AND • • •
PLAY HAS BEEN THE TASK
AND PLEASURE OF THE STAFF
OF THE 1936 QUILL AND BLADE.

THE SHADOW LENGTHENS • •

The Editorial Staff of the "Quill and Blade" has endeavored to make this book an accurate picture of student life, but we strove also to catch the elusive spirit of the school; to lift it above the routine of fact-learning and skill-development and to analyze the underlying ideals, which although rarely voiced, really motivate school activities.

In our first volume which was dedicated to and interwoven with the life of General Lew Wallace, for whom our school was named and whose crest we proudly use, we attempted to bring out the fine qualities of a great character and to show the enduring effect of such a character on succeeding generations.

The second volume showed the operation of the Work-Study-Play plan for the three fold development of the child which makes for greater happiness and larger usefulness of the citizens of tomorrow.

In this third volume, we have attempted to articulate the Work-Study-Play school from an informal point of view showing the shadows and reflections of student activities in relation to their school life.

We have hoped that you will find in these three small volumes evidences of vision for future growth, faith in ourselves and our community, and dreams materialized, for "Living is dreaming; only in the grave are there no dreams".



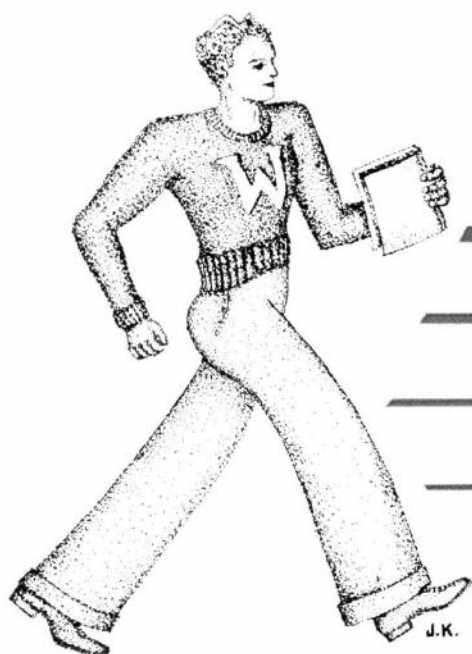
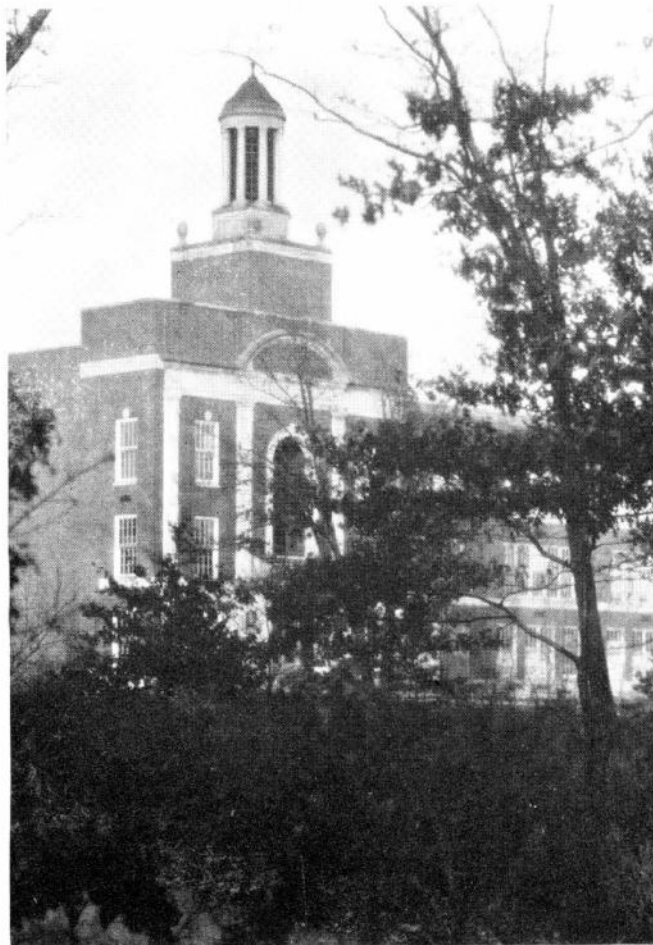
FANFARE • • •

Out from the dim shadows and reflections of high school life comes the clarion call of youth—militant—challenging—announcing their perennial approach to the field of larger service in the community, the state, and the nation and demanding their right to serve, to take their places with adults—to share responsibility.

Youth brings recurrent enthusiasm, new life, new faiths, new hopes and new dreams—and the materializations of these dreams are the milestones of human progress by which we slowly and painfully struggle on toward our goals.



OUR TOWER—GLIMPSED
THROUGH THE TREES



To
a part of
of comings and
life, now peering into
past, now dazzled by the
discovery of our contemporaries;
eager, zestful, undefatigable in
developing the habit of critically
presented to us so that each
a freer and fuller life: this



A LATE AFTERNOON IN AUTUMN


be
the pattern
goings of student
the dim shadows of the
brilliance of scientific
but always remembering to be
our search for the truth,
analyzing the facts and situations
succeeding generation may lead
is the eternal challenge to youth.

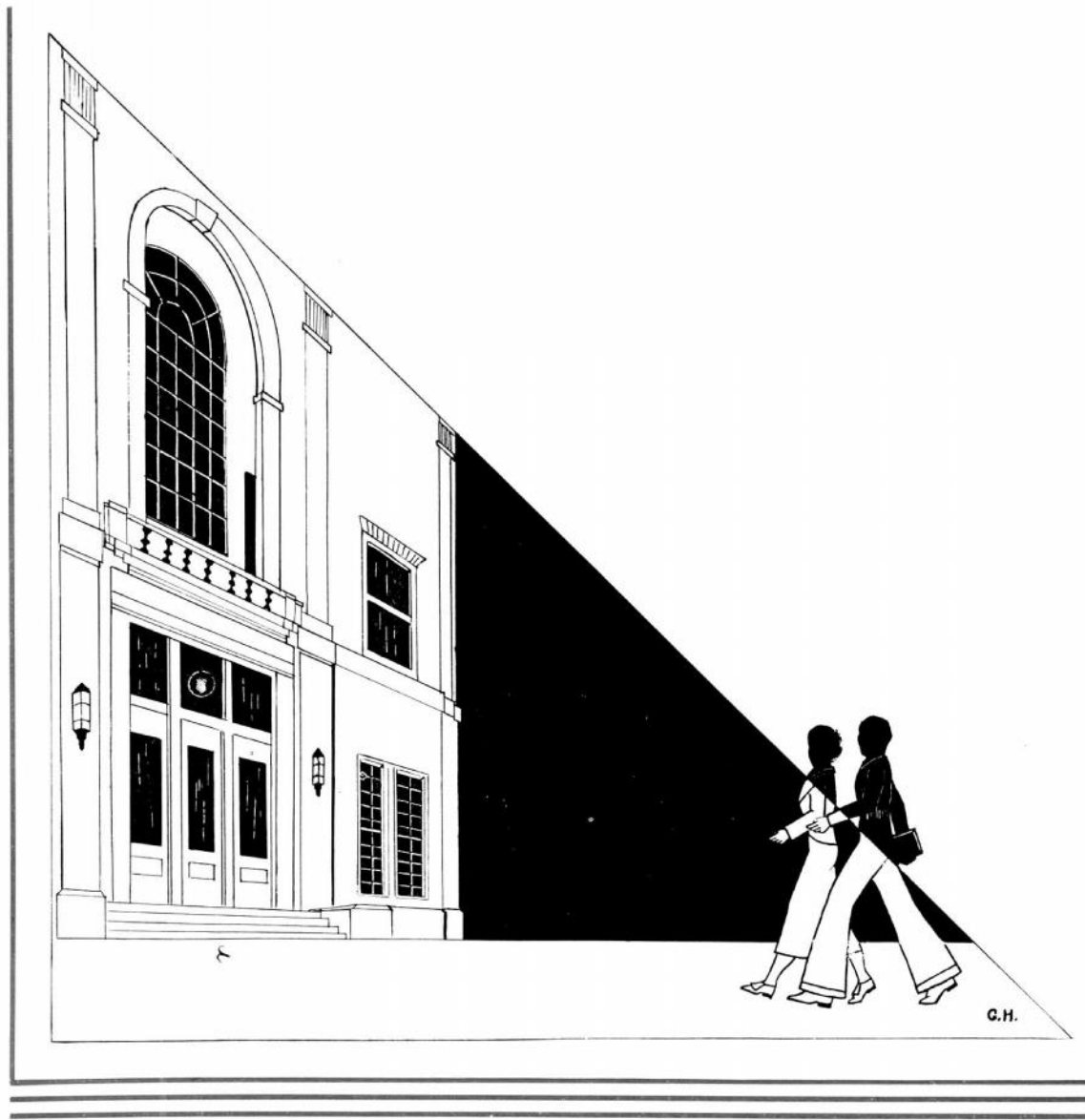


J.K.

This sketch is our main entrance with the great arched window overhead which lights the stairs to the art salon, study hall, and library. Flanked on either side, by the great bronze lanterns, is the portal through which hundreds of boys and girls have passed and will pass in ever increasing numbers to make up a new cross-section of the community from which they come.

Within these doors there are quiet places among the stacks in the library, art room, or in the studios of the auditorium and music departments, where one may escape and reflect upon the busy life about one; within them also, are noisy spots where others are engaged in the keen intensity of competitive sports or classrooms where a hum arises from an equally keen desire to surpass in academic fields. Here likewise are shops and workrooms where creative ability is finding vent, shadowy ideas are becoming realities and dreams of beauty are taking form. Within these walls we are not learning to live, but we are in reality living a life rich in contacts and opportunities as no subsequent years can ever be enriched for the entire group. When we pass out through these portals, we must carry with us into the outside world some of the values we have gained therein.





SCHOOL



WILLIAM A. WIRT, EDUCATOR

To the world, another prominent educator but to us he is more: he is the creator, the founder, the very essence of our internationally known school system. After years of research and intensive study, Dr. Wirt concluded that study alone doesn't result in education. It must be combined with the practical application of the studied material. And all this must be judiciously mixed with play, for just work and study, besides being a strenuous program, would be lacking in interest to the active boy or girl.

We have under Dr. Wirt's supervision the Board of Education and under them the directors of various departments who have charge of about five hundred specialized teachers who in turn offer what they have gained through years of training and experience to the twenty thousand school children of Gary.

He has created, organized and now operates a school that strives to meet the needs of the children of the great industrial city of Gary.

Louise Quinn



VERNA M. HOKE, Principal

Versatility is an outstanding quality of our principal, Miss Verna M. Hoke. Her first duty, to keep our school running smoothly and efficiently, is in itself a challenging job for anyone, but Miss Hoke considers her job finished only when she has shown interest and appreciation of every activity that takes place within our school walls. So during school hours we are accustomed to find her visiting our classes, suggesting better methods of study, or perhaps getting new ideas herself. And when she turns the key in her office door in the late afternoon she carries her interests to the football field and basketball floor, to extra curricular activity meetings, and occasionally to a dance, always in the full spirit of the occasion.

On state occasions we find her magnificently diplomatic and correct or when there is fun and excitement she is as fun loving and excitable as any of us.

How she can accomplish all she does in a twenty-four hour day continues to perplex us, and yet we have seen her stop when she was busiest to consider some student's trivial grievance.

To be able to be so sedate and undemonstrative or so benevolent and forbearing at correspondingly correct times—what more can we ask for in any principal?

Louise Quinn

Those of us who lose locker keys, hats, gym shoes, and various other paraphernalia are apt to think of Mr. Asher as the "Good Samaritan" who keeps our valuables until we call for them, and those of us whose goods and chattels remain lost may think his department incompetent.

If we are late, he says we must come to his eighth hour class to contemplate and cogitate the matter of personal responsibility for being on time. The unexcused absentees find themselves urgently invited to the eighth hour period to make up all time lost for insufficient reasons.

His job calls for many of these unpleasant contacts and you may be sure he enjoys them even less than we, but he does succeed in selling us the idea that an efficient school operates with a minimum of confusion and the maximum of co-operation from the individual students.

The Mr. Asher we come to know is a person of rare understanding, of unfailing humor in the face of multiple difficulties, and tireless devotion to The Lew Wallace School.

Louise Quinn



FLOYD G. ASHER, Assistant Principal

BOARD OF EDUCATION

The Board of Education for our schools is made up of three outstanding citizens who find time in their busy programs to give attention to school problems, advise and support the superintendent to the end that the educational needs of the children of this great industrial city may be met.

The newest member of our board is Dr. James A. Craig, pioneer physician and surgeon, who is the treasurer of the board. Dr. Craig brings to this organization an intelligent understanding of the educational situation, a wealth of experience, thorough knowledge of the community and a dynamic personality.

Mrs. May A. Patterson, who is serving her second term, is an outstanding civic leader with such widely diversified interests that she touches the community at innumerable points. Mrs. Patterson serves as secretary of the board.

Mr. Leslie Combs, the presiding officer, is completing his seventh year of service to the local schools. Mr. Combs is one of the pioneer contractors of the city whose experience has been invaluable to the local school authorities.

Mrs. Patterson, Dr. Craig, Mr. Combs



ADVISORY COUNCIL

The Lew Wallace Advisory Council was organized in 1931 to establish a relationship of mutual helpfulness between the community and the school; to promote understanding among the patrons of school problems; and to develop a spirit of cooperation between school and community for the benefit of the pupils.

The membership consists of one parent from each of the geographical districts in Glen Park, two alumni, three members chosen from the community-at-large and ex-officio membership of the president of the Parent-Teachers' Association, the assistant principal and the principal. Monthly luncheon meetings are held in the school cafeteria, at which time the work of the various school departments is presented by representatives of the departments, matters of community interests are discussed, questions are asked, suggestions are offered and received, and administrators present their problems to the end that the school and the community may be thoroughly integrated.

Our advisory council here makes its first appearance in the Quill and Blade.

Standing: Miss Bowser, D. E. Dawson, J. B. Shaver, W. M. Barcus, Mrs. Washburn, H. Moore, and F. Kross.
Seated: Mrs. Morrow, Mrs. Draper, Mrs. Goodyear, Mrs. Hansen, Mrs. Sunderman.



FACULTY

In the upper left hand corner we find Mary Cheever, who teaches us French verbs and Spanish nouns, conversing with Martha Clemens who does the same sort of things, but in English. Next is Dorothie Clayton, the throat inspector and guardian of the health of our school community. Two bright spots in the upper right hand corner are Paul Carlson, whose special field is mathematics and annual sales, and Waldon McBride, delver into ancient history.

When not checking themes, we discover Nelle Ensweiler reading to Georgia Harding of the domestic arts department and Lo'la Lemon, biological laboratory technician and specialist in "corridors". Willard Tormohlen of the social studies group listens attentively to Pearl Helmerick's explanation of something on the bulletin board which may be a little out of line with costume design. Rose Richardson stands by amused because she sees life in geometric form.

"Greek meets Greek" when Herold Hercd leaves his noisy woodshop to meet his neighbor and competitor Sam Bobele from the band room. Why hesitate Isabella Brown? Certainly Evelyn Parnell, the chairman of senior class sponsors and director of freshman English activities, takes precedence over gir's' gym and boys' dancing c'lasses.



FACULTY

Reading from left to right we find Mildred Scott of the physical education department waiting to put a word in the conversation between John Hayes, who helps boys draw plans for buildings, and Neola Johnson, who instructs in free hand drawing. Clarence Hendrickson's pleasant smile might come as a result of very successful band concerts.

Glenn Shelley and Florence Greve, English, may get that annual to the printer if Iris Roesinger stands by and furnishes the proper nourishment; perhaps it is "food for thought" they need.

The principal's office, where teachers sign "in" or "out" is a busy place. Here we find Lamon Coons from the physics "lab", Katherine Tuck who moulds private secretaries, Gordon Reed from the electric shop, and Laurence Rahbar who coaches state champion bookkeeping teams.

The faculty lodestone, the bulletin board, draws Russell Adams, Jennie Elkinton, and Edwin Carmony away from the general shop, sewing room and "math" class.

In a friendly conference on the stairs, Allegra Nesbit from the social studies department "holds up" her confrere Violet Street. Robert Shelley stands by ready to give any chemical formulae which may be helpful.

In the lower left hand corner we find Elizabeth Corey-Hunter whose task is correcting speech difficulties, Maragaret Neeld-Coons who is an unfailing source of library material for "term topics", and Agnes McLean from the Latin classes.

The auditorium insists on the artistic background. "Sally" Harbaugh and "Bee" Sandles promote artistic speech, Helen Egger and Marie Volz put the finish on everything musical, and all are under the capable direction of Mattie Hannsz.





• 1936 •
SENIOR
CLASS

Anna Fox, secretary; Mary Brek, treasurer; Roy Bartolomeo, president; Dorothy Knight, vice-president.

The class of 1936 entered The Lew Wallace High School in September of 1932. Though little acquainted with our fellow classmates, we soon discovered the leaders and when the freshman elections were over, our class officers were Emil Alcich, Dorothy Knight, Anna Fox and Junior Todd who, with the help of our sponsors, Miss Glenn Shelley, Miss Rose Richardson, Miss Allegra Nesbit, Miss Evelyn Parnell, and Miss Helen Egger, organized the class into a tightly-knit unit ready to carry on the traditions of the preceding freshman classes. Several of our members participated in the Christmas Pageant that year which has since been produced annually at The Lew Wallace High School. On the afternoon of St. Patrick's Day, 1933, we made our social debut at the Freshman Frolic, which was held in the gymnasium of the West Building. The favors and decorations for this gay affair were the traditional shamrocks and harps in honor of the patron saint. As this year drew to a close, we pledged

ourselves to return in September with renewed interest in the progress of the class of '36.

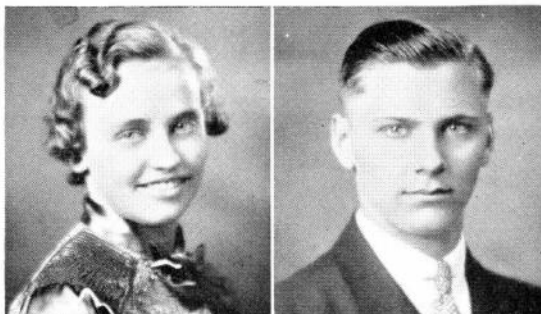
As sophomores, we elected Roy Bartolomeo, president; Walter Svetanoff, vice-president; Joe Ornelas, secretary; and Stephanie Pollack, treasurer. This year, in addition to our other freshman sponsors, Dr. Robert Shelley was elected to the faculty and to a share in the fortunes of the class of '36. Again the Christmas Pageant cast numbered several sophomores. The annual spring rose sale sponsored by the sophomores gave us an opportunity to show our prowess as salesmen and earned for us the distinction of being "the richest class". The crowning event of the year was the Sophomore Hop held on an April afternoon in the new gymnasium. The class of 1936 was beginning to "click" socially. This year the Wallace R. O. T. C. felt the social urge and anticipating the Military Ball took dancing lessons in the portable gym under the direction of Miss Isabella Brown. Our class brought forth an outstanding athlete appreciated by coaches, critics, opponents, and fellow team-mates alike for his ability and sportsmanship—Albert Bodney.

Time marched on. The Junior class elected Leonard Hauprich, Anna Fox, and Earl Stout, as president, vice-president and secretary-treasurer, respectively. Besides the former class sponsors, Miss Allegra Nesbitt, Miss Rose Richardson, Miss Evelyn Parnell, and Dr. Robert Shelley, Mrs. Gertrude Sparks joined the forces of the class of '36 as sponsor of a register group. We added greatly to our already swollen treasury through the annual orange sale, surpassing all records in the number of dozens sold. Several Juniors had leads in the Christmas Pageant which has come to be a tradition at Lew Wallace. "Lelawala" by Cadman was selected for the annual operetta by the music department and proved to be one of the best amateur productions ever given, largely through the fine work of Anne McIsaac, Francis Plummer, and Roy Bartolomeo under the direction of Miss Marie Volz. The crowning social event of the year, the Junior-Senior Prom, was a great success despite the fine drizzle which persisted during the entire evening. Beauty, romance, and gaiety were prevalent and spirits could not be dampened by mere weather. At this point in our history a talented vocalist, Anne McIsaac, discovered and graciously shared her gift with all of us.

Our senior year found Roy Bartolomeo again in the president's chair, Dorothy Knight was elected vice-president; Anna Fox, secretary; and Mary Brek, treasurer. Our sponsors for this year remained unchanged with the exception of Mrs. Gertrude Sparks, who left us to travel abroad. When we saw the Christmas Pageant for the fourth time it had lost none of its charm and impressiveness. We hope that we may leave this tradition as a heritage to the classes that follow. Another laurel, the successful comic opera, "The Marriage of Nannette", directed by Miss Helen Egger, was added to our collection. The leads in this production were taken by Stephanie Hrabota, Steve Chicos, Anne McIsaac, and Clarence Raub. Our high school days were rapidly drawing to a close. The hilarities of class day were appreciated by the group. Little was left unsaid and the foibles of classmates and faculty alike were mercilessly revealed. Baccalaureate sounded a more serious note and found us eager to present ourselves favorably before our community. At last we prepared for the pinnacle of the high school student's career, commencement. The exercises took place at the Memorial Auditorium as usual and the class of 1936, with a feeling of having achieved much, yet with hearts regretful at the thought of leaving, made its exit from the shelter of school walls and its entrance into the work-a-day world.

Albina Spychalski

SENIORS •

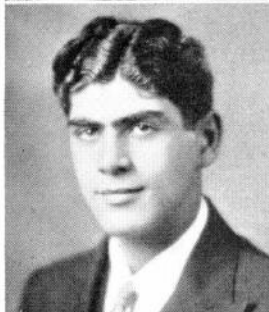


IRENE VIVIANNE
ANDERSON

Hockey '33, Vivi-Dar-
ians '35, '36, Booster '35,
G. A. A., Lyre Club.

EMIL ALCICH

Senior Honor Society
'36, Junior Honor Soci-
ety '34, Quill and Blade,
Football '35.



JOHN APOLZAN

Football '35, Track
'35.



MARY ANTICH



ROSE BAHUN

ROBERT L. ASHBY

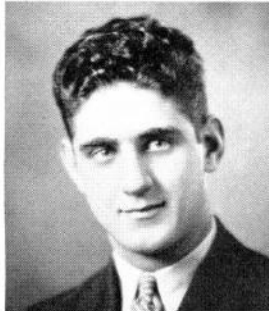
Festival Chorus '35,
'36.



ROY BARTOLO-
MEO

President Senior
Class, "Lelawala" '35,
Track '35, '36, Sphinx
'34, '35, '36.

ELLEN G. BAIR



EILEEN B.
BALLARD

Junior Honor Society,
Editor Philosopher
Staff, Vivi-Darians '34,
'35, '36, Inkpot '35, '36.

ALLAN P. BORCH

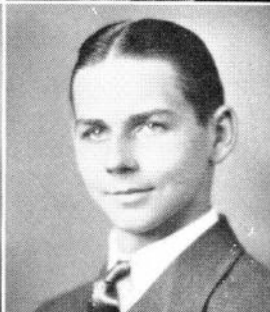


ALBERT A.
BODNEY

Football '34, '35, Bas-
ketball '34, '35, '36,
Track '34, Sphinx '34,
'35, '36.

ETHEL CAROL
BARICEVICH

Poetry Memory '33,
'34, '35, Declamatory
'35, '36, Inkpot '35,
Booster '35, G. A. A.



ALEX BRUST

DOROTHY BASTA

Editor News Page
'34, '35, '36, Track '33,
'34, '35, '36, Festival
Chorus '33, G. A. A.,
Glee Club.

FARREL SELMA
BLACK

FRANK BUMBALES

FRANK BUSHEMI

ELMA BLANKLEY

MARGARET
BLASCHKE

STEVE CHICOS

"Lelawala" '35, "Dad-
dy Longlegs" '35, Yell
Leader '34, '35, '36, Play
Contest '35, Sphinx '35,
'36.

ALEX CHOUINARD

MARY BREK

Treasurer Senior
Class, Senior Honor So-
ciety, Annual Staff,
Commercial Contest '35,
Vivi-Darians '36.

MARIAN RUTH
BROWN

Junior Honor Society,
Festival Chorus '32,
Olympians, '32, '33, Au-
ditorium Council '35,
'36, Debating Team.

WILLIAM
CHRISTOFF

Sphinx '35, '36, Ink-
pot '35, '36, Philosopher
Staff '35.

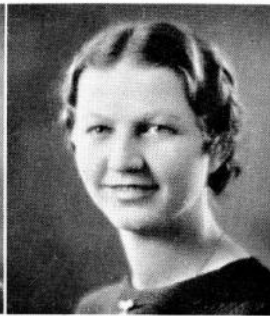


SENIORS •



ERNEST
CHRISTOPH

"Lelawala" '35, Track
'34.



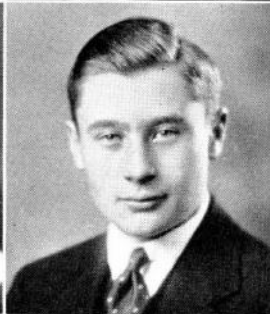
PAULINE VIVIAN
C. CHAPMAN

Festival Chorus '34,
Glee Club, Wallace Wiza-
ards.



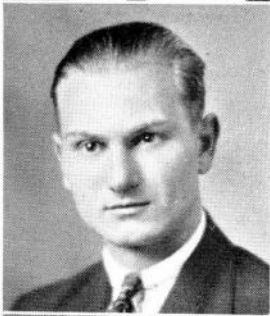
SOPHIA M.
CHABRAJA

Captainball '35,
Swimming '35, Track
'34, G. A. A.



JAMES A. CROCUS

Head Traffic Officer
'36.



HOBERT F.
DAGGETT

Football '31, '34,
Track '34.



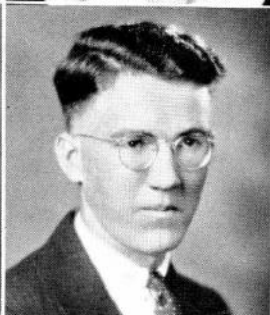
HELEN CARTER

Dialists.

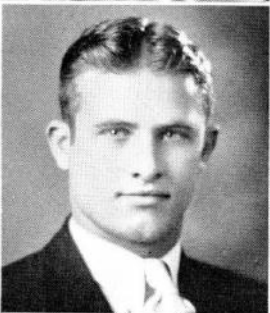


HOLLY FAYE
CARLSON

Editor News Page
'35, '36, Festival Chorus
'34, '35.



LAWRENCE F.
DOERR



PAUL ELIBASICH

Football '34, '35.

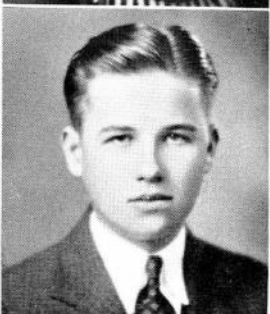


JEAN S. BURRISS

Vivi-Darians '35,
Wallace Wizards.



KATHARINE L.
BUGARIN



EDMUND
FELINIAK

LOA CHITTUM

Poetry Memory '35,
Play Contest '35, Vivi-
Darians '36, Auditorium
Council '35, '36.

ELMER FERGUSON

Wallace Wizards.

WOODRUFF
GOODYEAR

ELIZABETH
COURTIS

MARGARET
CREASY

F. WILLIAM GREVE
Annual Staff, Track
'34, Glee Club, Radio
Club, Debating Team.

LEONARD M.
HAUPRICH

President Junior
Class, Junior Honor So-
ciety, Sphinx '34, '35,
'36, Dialists.

OPAL P. CRANE
Auditorium Council,
Wallace Wizards.

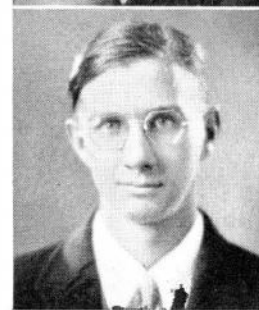
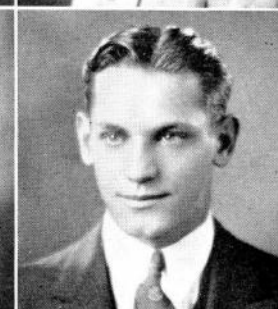
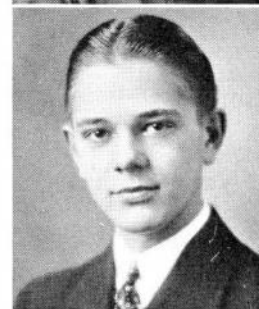
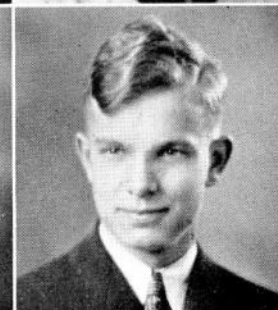
WINNIFRED L.
CRAIN

Vivi-Darians '36,
Olympians '34, Inkpot
'35, Lyre.

ROBERT J. HERMES
Football '35, Track
'34, '35.

CARL HENRY HILL
Annual Staff, Co-
Chairman of Safety
Committee '35, '36, Wal-
lace Wizards.

WILMA LOUISE
CRAIN
Junior Honor Society,
Festival Chorus '34,
Vivi-Darians '36, Inkpot
'34, '35, '36, Glee Club.



SENIORS •

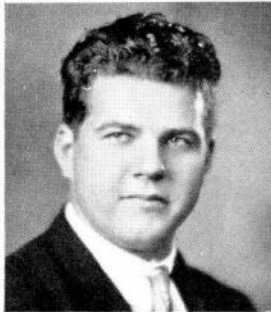


MARY LOUISE
DUNN

Festival Chorus '32,
Glee Club.

GEORGE HUSTON

Annual Staff, Track
'35, '36, Wallace Wizards.



ROBERT L. HYNES

EDYTHE
ETCHASON

Festival Chorus '32,
Poetry Memory '33,
Glee Club, Dialists.



ROSE ALINE
FORTIN

LESTER B. KELLEY

Track '35.

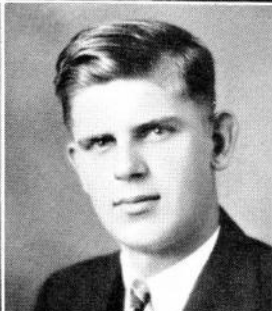


NICK KOSANOVICH

Manager Basketball
'35.

ANNA K. FOX

Secretary Senior
Class, Senior Honor So-
ciety, Hockey '32, '35,
Commercial Contest '35,
Vivi-Darians '34, '35,
'36.

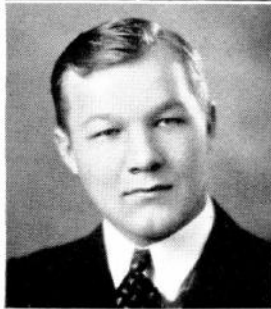


MARY ANN FUJKO

Festival Chorus '34,
Glee Club.

JOHN M.
KUNCAITIS

Football '35.



MICHAEL KRALL

Football '33, '34, '35,
Swimming '33, '34.

ANN LORRAINE
GARAPIC

Festival Chorus '33,
Poetry Memory '32,
Glee Club.

WALTER W.
KURECKA

Basketball '35, '36,
Track '33, '35.

ANNE GAYDOS

G. A. A., Glee Club.

JULIA GAZA

Hockey '35, Captain-
ball '35, Track '34, Biol-
ogy Club.

JOHN KVORTEK

Annual Staff, Wal-
lace Wizards.

CARLO E.
MARKOVICH

Swimming '34, '35,
'36, Yell Leader '34, '35,
'36.

LEONA GIELOW

Biology Club.

ANN GLANKOVIC

Festival Chorus '34,
Glee Club.

GORDON C. LYNDE

Football '33, '34, '35,
Basketball '36, Track
'35.

NICK MATULIS

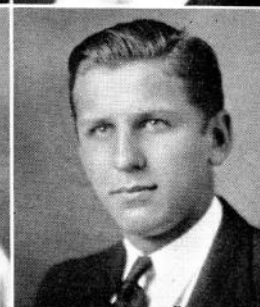
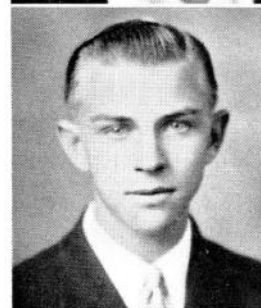
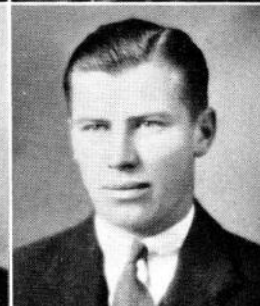
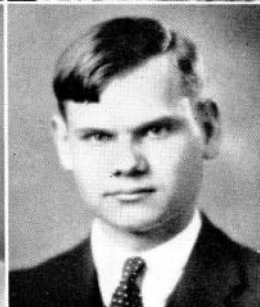
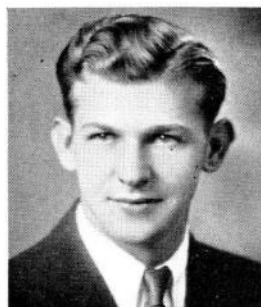
DOROTHY MAXINE
HALL

Festival Chorus '33,
Glee Club.

ADELINE GRZANKA

WILLIAM F.
MAZLACK

Football '33, '34, '35,
Track '33, '34, '35.



SENIORS •



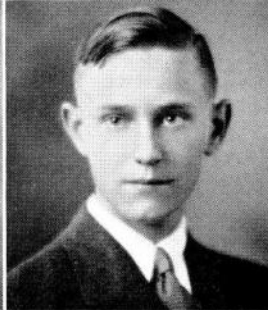
IRVIN MYERS



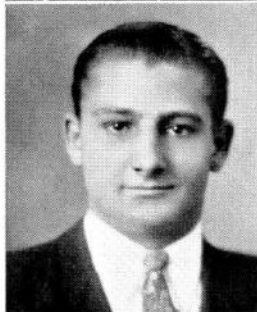
MARGARET HAGEN



KATHARINE W.
HELWIG
Festival Chorus, Glee
Club.



DONALD NELSON
President Better Citi-
zenship Organization
'34, '35, Senior Honor
Society, Annual Staff,
Sphinx '34, '35, '36, Lat-
in Contest.



PETER ORLICH



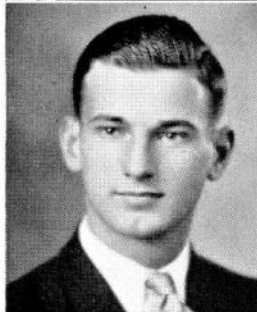
ERMA A.
HENDERSON
Festival Chorus '31,
Poetry Memory '31,
Glee Club.



CLARA L. HESKY



JOE ORNELAS
Senior Honor Society,
Health and Hygiene
Committee '35, '36,
Sphinx '35, '36, Inkpot
'35, '36, Booster '35, '36.



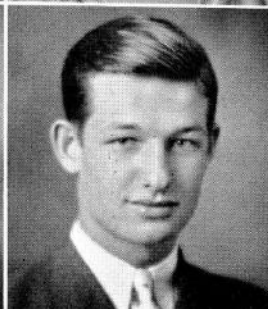
STEVE T. OZIMEC
Football '34, '35.



NORMA JEAN HIGH
Glee Club.



PEARL EMELEA
HILL
Junior Honor Society,
Hockey '35, Olympians
'34, '35, G. A. A., Glee
Club.



FRED PARKER
Track '35.

JOYCE MARY
HOLLENBAUGH
Glee Club.

EDWARD FLOYD
PATCH
Festival Chorus.

BUSTER PILLMAN
Football '33, '34, '35.

SABINA
HLODNICKI
G. A. A.

STEPHANIE E.
HRABOTA
"Marriage of Nan-
nette" '36, Play Contest
'35, '36, Glee Club, Dialists.

FRANCIS
PLUMMER
"Lelawala" '35, Play
Contest '35, Sphinx '34,
'35, '36, Lyre, Auditori-
um Council.

CLARENCE RAUB
"Marriage of Nan-
nette" '36, Olympians
'35, '36, Inkpot '36, Glee
Club, Debating Team.

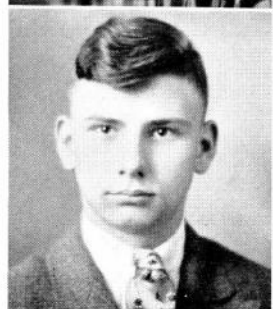
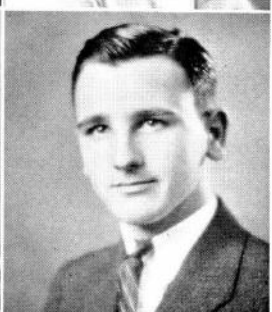
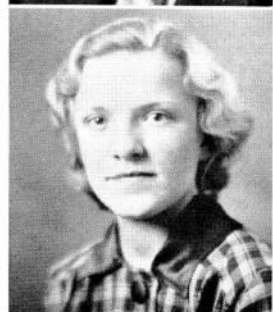
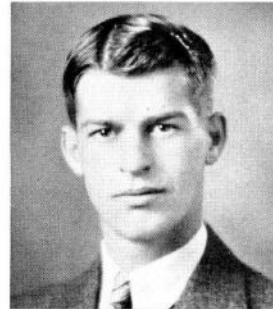
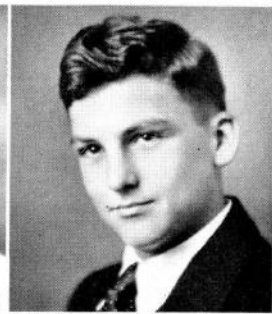
MARY JAKOB

FRANCES B.
KALAMIR
G. A. A.

JOHN ROBERTS

CARL SACKMAN

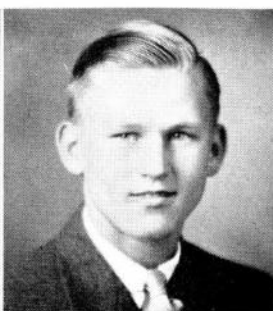
GENEVIEVE
KARPEN
G. A. A.



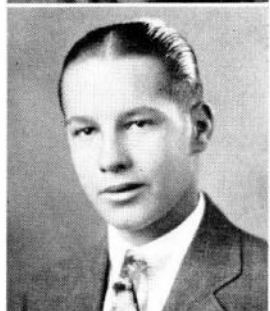
SENIORS •



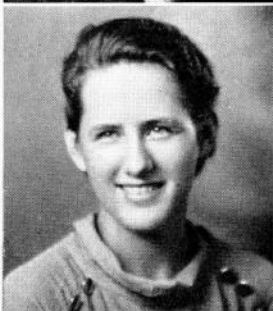
GRACE M. KASS
Track '35, G. A. A.



ANDY SAJDA
Football '35, Basketball '35, '36.



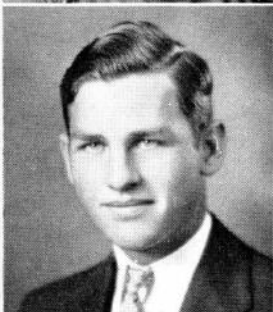
RAY SCHULTZ



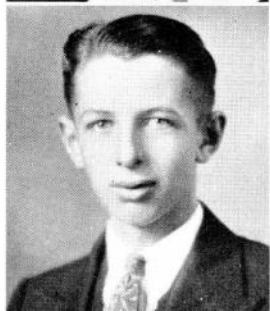
EMILY KLODZEN



DOROTHY RAE
KNIGHT
Senior Honor Society,
Vivi-Darians '34, '35,
'36, Olympians '34, '35,
G. A. A., Biology Club.



ELTON L. SCHOON
"Lelawala" '35, Football '33, '34, Play Contest '32.



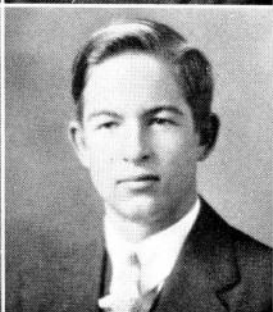
HERBERT N.
SCHUTZ



ANNE McISAAC
Senior Honor Society,
Junior Honor Society,
"Lelawala" '35, Vivi-Darians '35, '36, R. O. T. C. Sponsor.



HELEN MARIE
KONKLE
Vivi-Darians '35,
'36.



DONALD SCOTT



LUTHER SERWISE



BERNICE E.
McANARY
Vivi-Darians '35,
'36.

GEORGE SGOUROS
Football '33, '34, Radio Club.

MILDRED MacPHERSON
Basketball '34, Commercial Contest '34, G. A. A., Glee Club.

DOROTHY C. MATTHIES
Vivi-Darians '34, '35, '36, R. O. T. C. Sponsor, G. A. A., Girls' Conference Chairman '36.

NICK SKORICH
Football '33, '34, '35.

HOWARD SMITH

THELMA NICHOLS
Festival Chorus '33, '34, '36, Glee Club.

LOIS OBERG
Swimming '35, Olympians '34, Glee Club.

WALTER SMITH

WAYNE LEE SMITH

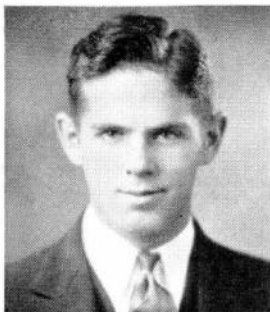
GENEVIEVE L. O'BRADOVIC
Hockey '35, G. A. A.

LUCILLE OLSON
Glee Club.

EMIL SPANICH
Senior Honor Society, Safety Committee '34, '35.



SENIORS •



LLOYD SPICER

Football '33, '34, '35,
Basketball Manager '35,
'36.

NORINE VIRGINIA
OLSEN

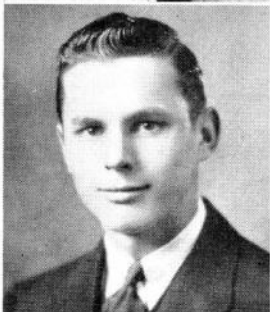
Glee Club.



ELISE PARRY

Booster '34, G. A. A.,
Glee Club.

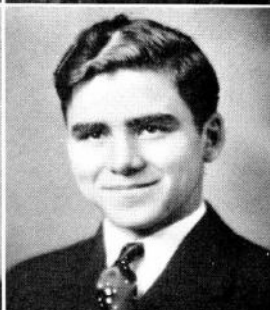
EDWARD STARR



WILLIAM
STAZINSKI
Track.

LUCY PEST

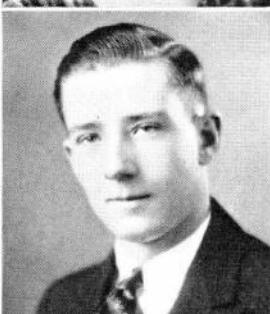
Captainball '36, G. A.
A.



MARTHA PODGE

DONALD STIMSON

Sphinx '35, '36, Lyre
Club.

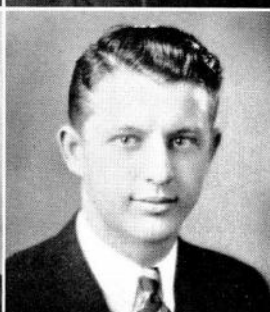


EARL R. STOUT

Secretary Junior
Class, Sphinx '35, '36,
Radio Club.

ANN J. POLLOCK

G. A. A.



NELLIE QUENETT
G. A. A.

WALTER
SVETANOFF

Basketball '33, '34,
'35.

LOUISE QUINN

Annual Staff, Vividarians '34, '35, '36, R. O. T. C. Sponsor, G. A. A., Wallace Wizards.

JAMES UHLIR

Football Manager '35.

RUSSELL TROUP

ROSALIE JANICE
ROCHFORD

Basketball '33, G. A. A., Glee Club, Dialists.

LOUISE SCHMANDT
Glee Club, Dialists.

GEORGE ANTHON-
IUS TICHAC

Football '32, '33, '34,
Basketball '33, '34, '35.

MARGARET
SGAMBELLURI

ALMYRA
SCHOONOVER

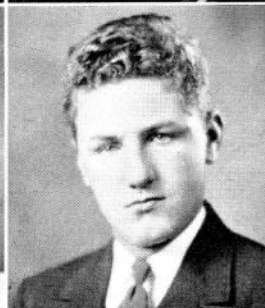
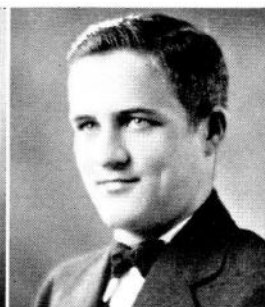
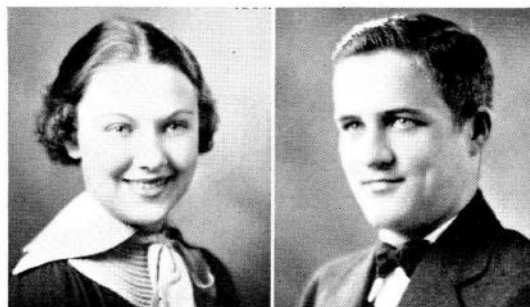
FAYE SPICER
Glee Club

ELEANOR SMITH
G. A. A., Glee Club.

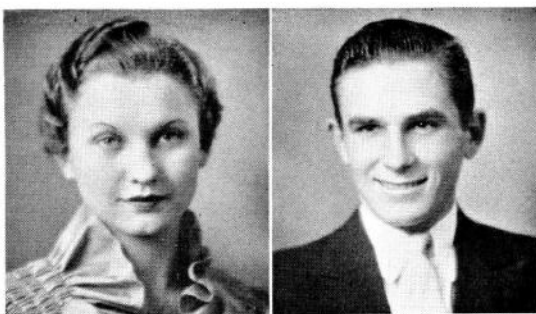
EDWARD A. TOLPA

ALBINA
SPYCHALSKI

Senior Honor Society,
Annual Staff, Poetry
Memory '33, '34, Com-
mercial Contest '35, De-
bating Team.



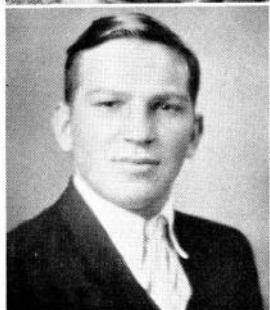
SENIORS •



MARTHA E.
STEFANCHIK
Vivi-Darians, G. A.
A.



JOE VALENTI
Track '35, '36.



SALVADORE
VALENTI



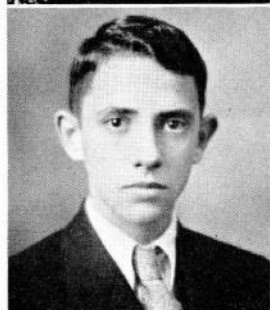
MARY ANN
VISCLOSKY
Chairman of Health
and Hygiene Committee
'33, Booster '33, '34, '35,
'36, G. A. A.



FRANCES VIDMICH
Chairman of Building
and Grounds Committee
'33, Vivi-Darians '35,
'36, Glee Club.



SHIREEN E.
TORMOHLEN
Lyre Club.



MORGAN WATKINS



DOROTHY UHLIR
Glee Club.



MARY M.
STEFANSKY
Captainball '34, G. A.
A.



HENRY VORWALD
Track '34, '35, Track
Manager '36.

JACK WEBER

Judge Better Citizen-
ship Organization '34,
Sphinx '35, '36, Glee
Club, Debating Team.

HELEN VRSKA

Glee Club.

LAURA PAULINE
WAITE

Booster '34, '35, '36,
Lyre Club.

JOE WILCHOUSKI

Football '34, '35.

BEVERLY WATSON

Inkpot '34, '35, '36,
Glee Club.

LYDIA ELIZABETH
WATKINS

Glee Club.

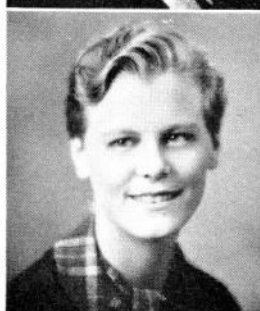
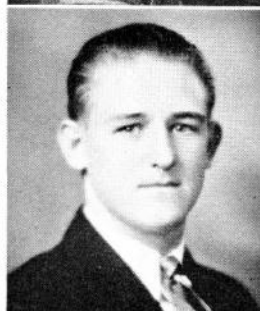
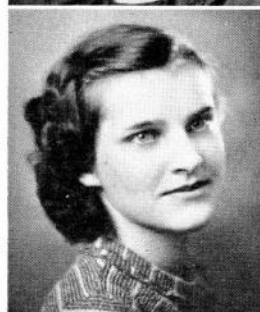
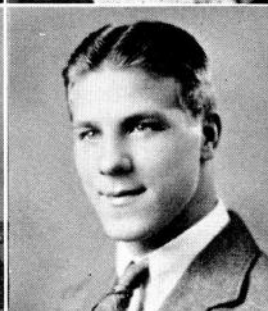
HAROLD YOUNG

MARY ELLEN
WILSON

HELEN
ZVONKOVICH

BRUNO ZABINSKI

"Marriage of Nan-
nette" '36, Festival Cho-
rus '33, Glee Club.





Doris Mark, treasurer; Juanita Hilton, secretary; Ruth Schattat, vice-president; Charles Novotny, president.

JUNIOR • CLASS •

The class of '37 has distinguished itself in many fields. It early showed scholastic ability and will have a formidable array from which to choose salutatorian and valedictorian in the coming year.

Under the guidance of Mrs. Greve, Miss Cheever, Mrs. Clemens, Miss Gorsline, Mr. Carlson, and Mr. Rahbar, acting as faculty sponsors, the class organized and elected Tom Moore, president; Betty Weaver, vice-president; and Leslie Lavery, secretary-treasurer. Plans for the one social event of the year were soon completed and the Freshman Frolic became a reality in February, 1934. The success of this party exceeded even their own expectations.

The following year was marked by greater activity and as might be expected, began with a social event, the Sophomore Hop, held in December, 1935. The grand march led by Edwin Garriott and his guest, Annette Zeigler, opened this party which proved that the sophomores were capable of working as a unit.

From this social whirl the class tackled a real business proposition, that of handling the traditional "Rose Day" sale in a satisfactory manner. Again they succeeded and came up smiling with more than a hundred dollars in profits to add to their otherwise insignificant treasury.

Next they turned to the business of drama and presented as their sophomore play, "Daddy Long Legs", directed by Miss Selina Harbaugh. Veronica Churchill, Martha McConnell and Nick Poulos shared honors as "stars" in this production.

No small amount of credit for this year's work should be accorded the class officers, Edwin Garriott, Rhoma Heal, Dale Langley and the faculty sponsors who with one exception were the same group who had been the freshman advisors. Mr. Carmony replaced Miss Gorsline who was away on leave.

The junior year opened with the important question of whether the "Quill and Blade" was "to be or not to be" and the class was happy to be able to become joint editors with the senior class and share equally the responsibilities and honors of this volume.

Again this year they proved their business ability with Nancy Armstrong and Dorothy Zweig winning awards for outstanding salesmanship in the annual orange sale which is the money making proposition allotted to Juniors.

"The Admirable Crichton" by Sir James Barrie was the vehicle chosen by Miss Harbaugh to challenge the dramatic ability of the class. Richard Pruitt as "Crichton" and Ruth Schattat as "Lady Mary" did notably good work. Many of their classmates envied the truly English accent.

But not only in the field of drama have they shown their prowess, for from this class has come Nick Poulos and Julius Kern, who helped to win football honors for Lew Wallace; Edwin Garriott, who showed ability as sophomore president, was elected president of the Better Citizenship Organization; Mary Remus and Robert Reister won the right to compete for state honors in the Latin contest; Mildred Wranesch entered the vocal solo contest; Veronica Churchill and Edith Livingston won recognition on the school debating team; in fact in all competitive activities members of the junior class will be found as leaders or "runners-up".

Selecting an appropriate mounting for the school crest on the 1937 rings was a weighty responsibility which was dispatched after due consideration to the entire satisfaction of the group.

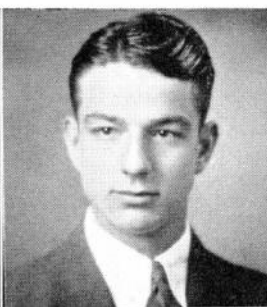
The Junior-Senior Prom held May twenty-third was the gala event of this year. It served as a fitting climax for the year 1936 and an incentive to get off to a glorious start in the year 1937. Juniors realize that they have arrived at the "beginning of the end" and that the coming year with the interesting event of the senior play and the responsibility of announcements may be submerged by the more serious business of having sufficient units for graduation and the closing of their high school experiences.

JUNIORS •



NANCY ANN
ARMSTRONG

Lt. Girls Auxiliary,
Lyre Club.



PETER H. ADAMS



LEONARD
ALLEGRETTI



GERTRUDE LOUISE
BLAYLOCK

Glee Club.



MARYBELLE BROWN

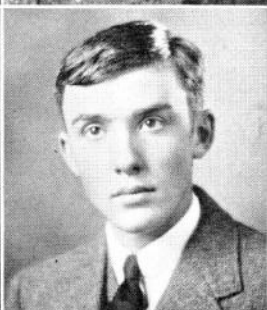


BETTY BREWER

Inkpot '35.



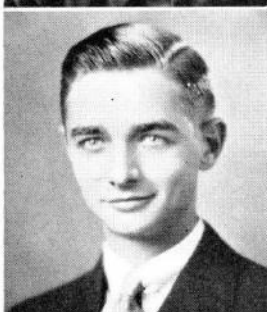
NORMA JUNE
BURCHINAL



ROBERT D. AVERY

G. A. A.

Olympians '34, '35,
'36.



RAYMOND BAARS

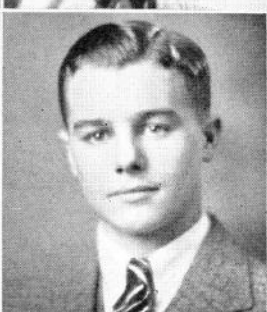


CLETA ELOISE
CAYLOR



VERONICA
CHURCHILL

Junior Honor Society,
Annual Staff, Inkpot
'35, '36, Auditorium
Council, Debating
Team.



WALTER BAHUN

GEORGE BAROMICH

ROSEMARY
COSTOFF

"Marriage of Nan-
nette" '36, Captainball
'36, G. A. A., Lyre Club,
Glee Club.

LORRAINE
COLLETTE

Captainball '35, G. A.
A., Wallace Wizards.

ROBERT G. BERLIEN

ANDY BOBOR

BONNIE COOK

HELEN CHARVAT
Glee Club.

ELIZABETH ANNE
DAWSON

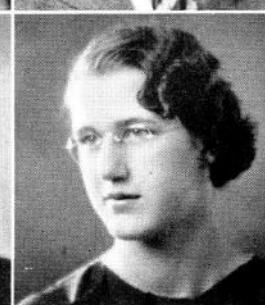
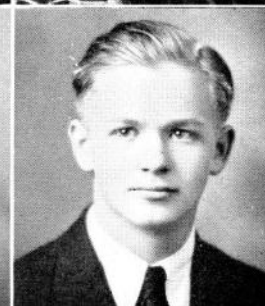
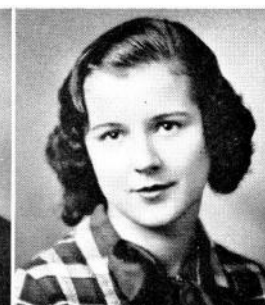
Junior Honor Society,
Vivi-Darians, Olym-
pians, Lyre Club, Sen-
ior Honor Society.

ALMA IONE
DENNISON
Captainball '35, G. A.
A., Glee Club.

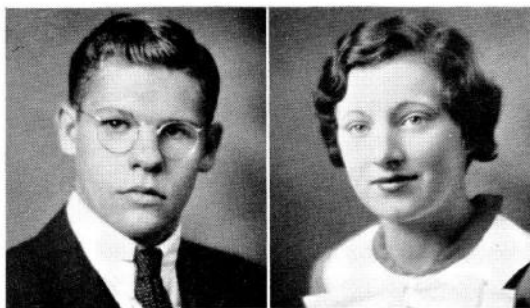
FREDERIC BROKER
Track '35, '36, Olym-
pians '35, '36.

CHRISTIE
CHRISTOFF
Football '35, Track
'36, Wallace Wizards.

ELIZABETH
DINWOODIE
Graduated 1936.



JUNIORS •

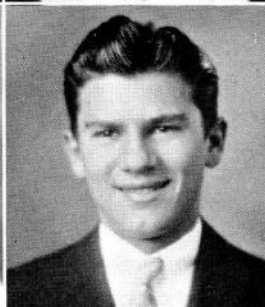


EDWIN E. GARRIOTT

BERNICE E. DOTY

President Better Citizenship Organization '36, Junior Honor Society, Football '33, '36, Track '34, '36, Sphinx '36.

G. A. A.

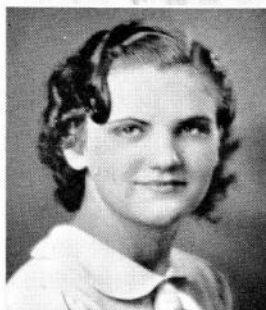


ESTHER LOUISE
FAUVER

JERRY G. DUSICH

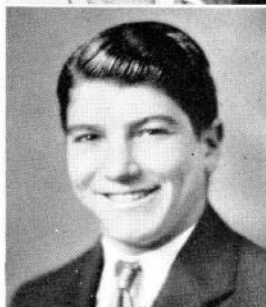
Basketball '35, Track '35, Poetry Memory '34, G. A. A., Auditorium Council.

Yell Leader '34, '35, Booster '34, '35.



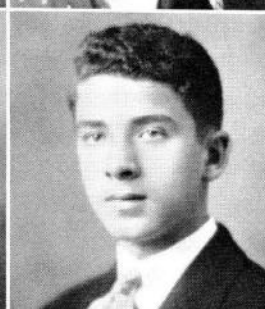
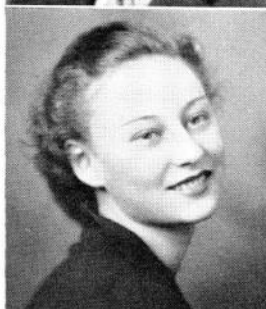
MILDRED FENDER
Wallace Wizards.

EVELYN FERRERO
Glee Club.



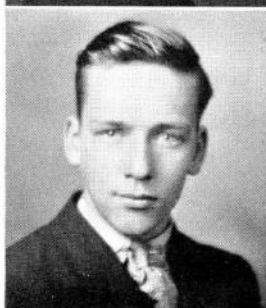
JOE CUTRO
Track '35.

ELIZABETH FERICH
"Daddy Longlegs" '35, Auditorium Council.



DOLORES
GRENOWICH
Swimming '36.

EUGENE F. COOK



ERNEST COFFMAN

MARTHA JEAN
GREGG

MILDRED GUELFO
Glee Club.

ROSCOE A. GOULD
Booster '36.

BEN GOZOWSKI

RHOMA ELIZABETH
HEAL
Junior Honor Society,
Vivi-Darians '35, Olym-
pians '34, '35, G. A. A.,
Lyre Club.

GRACE M. HELM
Festival Chorus '33,
'34.

HARRY J. HANSEN
Football '34, '35, Bas-
ketball '34, '35, Track
'36.

VIVIAN D. JOHNSON
Junior Honor Society,
Vivi-Darians, Olym-
pians, Lyre, Senior Hon-
or Society.

JUANITA J. HILTON
Secretary Junior
Class, Annual Staff,
Festival Chorus '33, G.
A. A., Glee Club.

ADAM HOJNACKI

ROSALIE KENTOPP
Junior Honor Society,
Annual Staff, Vivi-Dar-
ians '35, Olympians '34,
'35, Latin Contest '34,
'35, Senior Honor Soci-
ety.

MARGUERITE
KENYON
Festival Chorus '33,
'34.

RICHARD HOPPE



JUNIORS •



STEVE P. HUNCH

Football '34, '35,
Track '35, '36.



VIRGINIA

KOBYLANSKI

Poetry Memory '34,
Olympians '35.



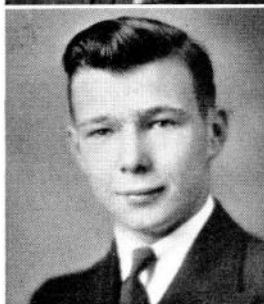
BETTY JANE KORTE

Festival Chorus, Glee
Club.



STEVEN ILLES

Track '35, '36, Lyre
Club.



DWAYNE IRWIN

Graduated 1936. Ra-
dio Club, Wallace Wiz-
ards.



GERALDINE

LAWSON

Glee Club.



THERESE M. LENTIN

Graduated 1936. Ink-
pot '35.



JOSEPHINE

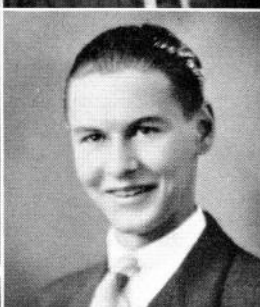
LEWANDOSKI

G. A. A.



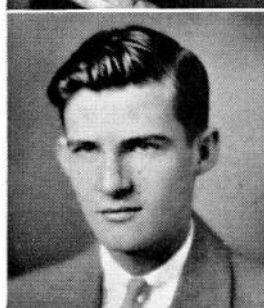
MARGUERITE JOAN
LINSBECK

G. A. A.



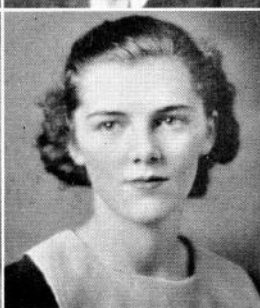
HERBERT H. JONES

"Marriage of Nan-
nette" '36.



ELMER JANSEN

Track '36, Lyre, Wal-
lace Wizards.



EDITHE R.

LIVINGSTON

Clerk Better Citizen-
ship Organization '35,
Annual Staff, Vivi-Dar-
ians '35, Inkpot '35, De-
bating Team.

AGNES A. LUCAS

"Daddy Longlegs" '35, Festival Chorus '33, Booster '35, G. A. A., Glee Club.

JULIUS KALEY

Reading Club.

JULIUS J. KERN

Football '34, '35, '36, Track '35, Sphinx '35, Booster '35.

STELLA LUKASIAK

Graduated 1936. Festival Chorus '34, G. A. A., Glee Club.

MARTHA RUTH
McCONNELL

Junior Honor Society, Annual Staff, "Daddy Longlegs" '35, Vividarians '35, Olympians '35.

DORIS MARK

Treasurer Junior Class, Olympians '35, '36.

SOPHIE MARGARET
MILLER

Wallace Wizards.

HARRY WILLIAM
KIETZMAN

GEORGE LANGEL

Track '36.

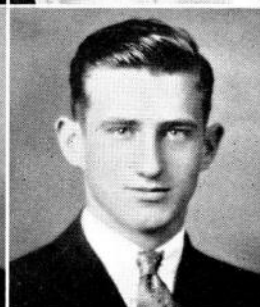
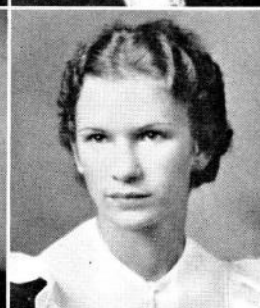
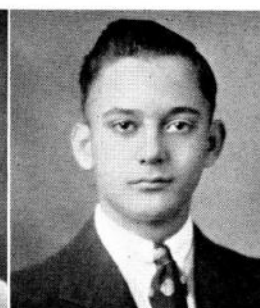
JOSEPHINE MISLAN

ROSE BARBARA
NOVOSEL

Booster '35, '36.

DALE LANGLEY

Judge Better Citizenship Organization '35, Junior Honor Society, Annual Staff, Track '36, Sphinx '36.



JUNIORS •



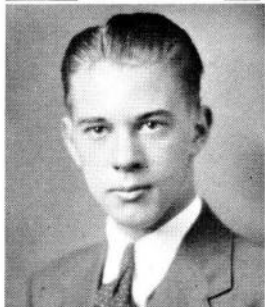
ELIZABETH NUZZO

Hockey '34, '35, Captainball '34, Baseball '35, G. A. A.



ROBERT T. LANHAM

Lyre Club.



LESLIE LAVERY

"Marriage of Nan-nette" '36, Festival Chorus '35, Olympians '34, '35.



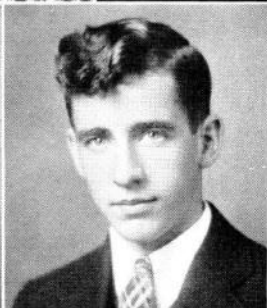
OLGA PANTELICH

"Marriage of Nan-nette" '36.



MARY LOUISE
PARSONS

Glee Club.



JACK McALLISTER

Track, Olympians, Auditorium Council, Wallace Wizards.



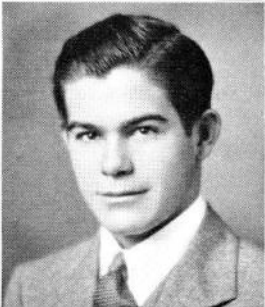
IRENE E. PAYT

G. A. A., Glee Club.



KATHERINE
PAVLAKOVICH

Glee Club.



ROWLAND McCOLLY



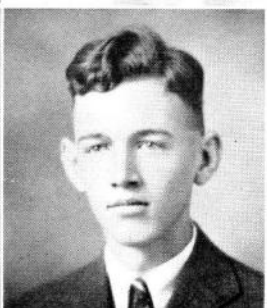
HELEN PETRICK

Festival Chorus '34, Glee Club.



ANNE RAFFAIL

Olympians '35.



DAN McKNIGHT

"Daddy Longlegs" '35, Radio Club, Auditorium Council, Debating Team.

GERALDINE J. REED

Glee Club.

ALEX G. MANDICH

Radio Club '35, '36.

EDWARD MURWAY

Senior Honor Society,
Junior Honor Society,
Chairman of Building
and Grounds Committee
'34, '35, '36.

MARY REMUS

Senior Honor Society,
Olympians '34, '45, '36,
Inkpot '34, '35, '36, Biol-
ogy Club '35, '36, Latin
Contest '34, '35, '36.

IRENE A. RONGERS

G. A. A., Glee Club.

LEONARD

MATTHEWS

Radio Club.

MARY MARGARET
RYAN

Vivi-Darians, Olym-
pians, Auditorium
Council.

JANET R. RYS

Lyre Club, Glee Club.

THOMAS MOORE

Track '35, Sphinx '35.

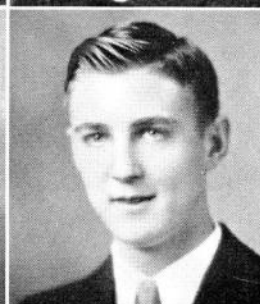
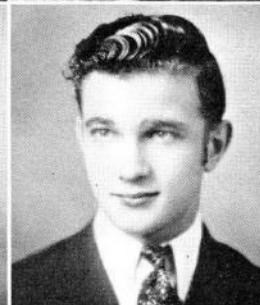
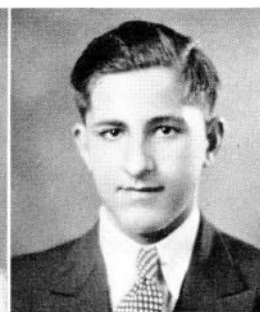
RUTH I. SARK

NORMA SCHMIDT

Poetry Memory '35,
Glee Club, Dialists, De-
bating Team.

CHARLES H.
NOVOTNY

President Junior
Class, Annual Staff,
Track '35, '36, Sphinx
'35, '36.



JUNIORS •

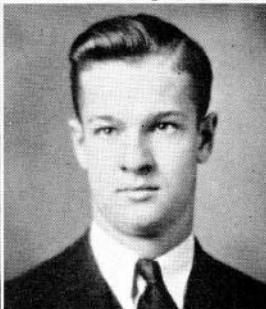


FRANCIS P. O'BOYLE

Olympians '35.

RUTH SCHATTAT

Graduated 1936, Junior Honor Society, Vividarians '36.



MAXINE SHARPE

Basketball '33, '34, Captainball '33, '34, Volleyball '34, G. A. A.

REX PARKER

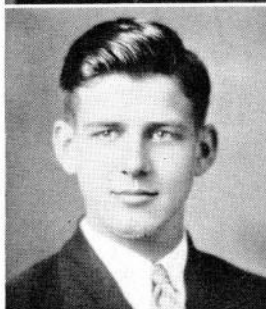
Swimming '34, '35.



LAURABELLE SHOCKLEY

"Daddy Longlegs" '35, G. A. A., Debating Team.

HELEN SHINOVICH

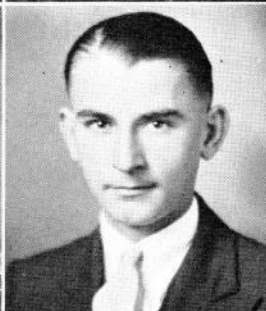


ROBERT F. PENCE

Manager Track '35, '36.

ELEANORE F. SIKICH

G. A. A.

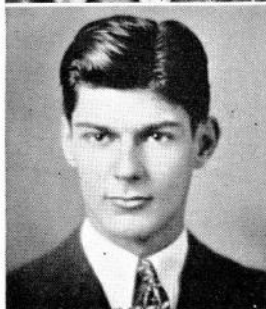


ANN DEANE SLOCUM

Olympians '35, '36.

JOHN PETRO

Wallace Wizards.



ANTHONY L. PETROVICH

HELEN JEANETTE SMOLKOVICH

Glee Club.

HELEN SOLAY

Basketball '35, Festival Chorus '33, G. A. A., Dialists, Glee Club.

NICK S. POULOS

Football '35, Basketball '36, Track '35, '36, Sphinx '34, '35, '36, Booster '36.

HARVEY M.
QUENETT

NINA STOVALL
Glee Club.

HELEN ST. PAUL
Hockey '35, Festival Chorus '33, G. A. A., Glee Club.

JACK QUINN

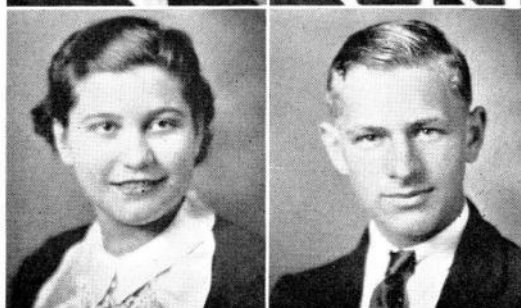
MARGARET
SZILLAGYI
Biology Club.

GIZELLA JENNIE
SUNNY
"Lelawala" '36, G. A. A.

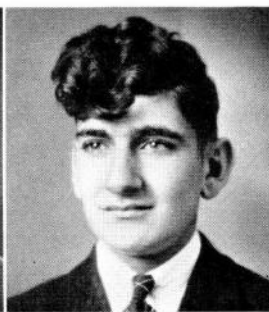
DELBERT SACKMAN
HELEN B. TOLPA
Glee Club.

ANN PAULINE
TOMLJANOVICH
G. A. A., Lyre Club,
Glee Club.

EDWARD SOHACKI

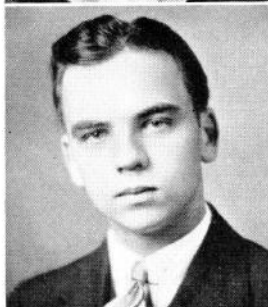


JUNIORS •



GOLDIE TSIAPAS

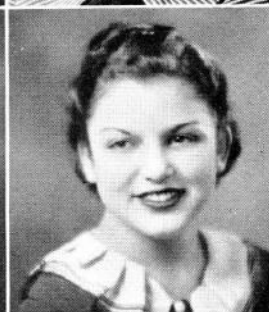
EDWARD
SVETANOFF
Annual Staff.



CHARLES F.
THORSSON

Football '34, '35,
Track '35.

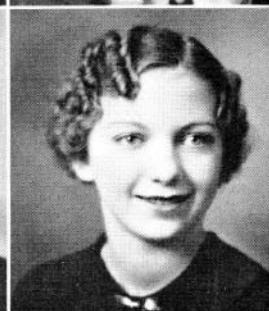
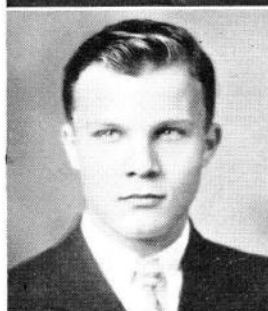
MARY VIDMICH



SHIRLEY WALLACE

BETTY JEANNETTE
WEAVER

Festival Chorus,
Olympians, Glee Club,
Dialists.



CARL VRLICH

Football '35, Basket-
ball '36, Track '36.

LOUISE WEBER

G. A. A.



DORIS R. WHITE

Festival Chorus '34.

ARTHUR WARCHUS

• JUNIORS

DORIS WINROTTE

Festival Chorus '34,
'35, Glee Club.

JOHN MORGAN
WATKINS

ALBERT
YOVANOVICH

MILDRED WRANESH

"Marriage of Nan-
nette" '36, "Lelawala"
'35, Glee Club.

DOROTHY ZWEIG

Annual Staff, Olym-
pians '35, Inkpot '35,
Booster '34, '35, Lyre
Club.

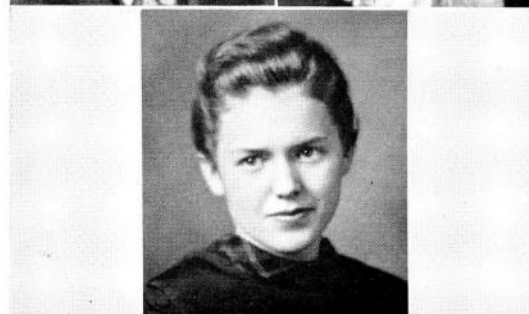
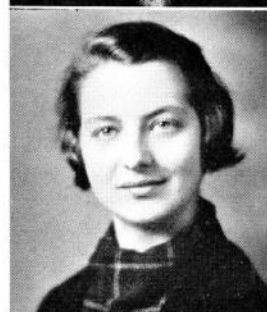
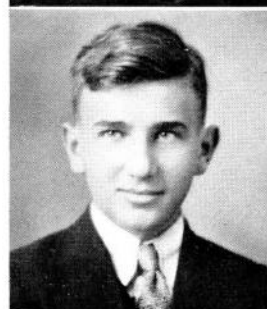
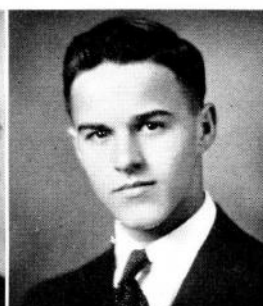
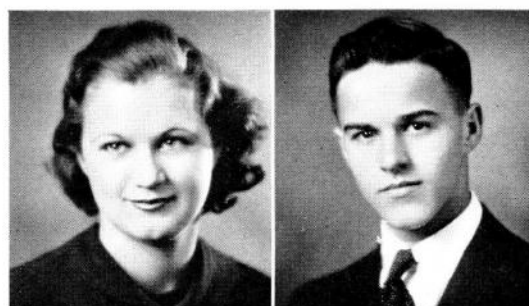
CECILIA B.
ZAJKOWSKI
Glee Club.

VICTOR ZARKOVICH

ROSE ZARADICH
Biology Club.

E. ANNETTE
ZEIGLER

Vivi-Darians '35,
Olympians '34, Glee
Club.



SOPHOMORES

To sophomores is granted the privilege of upholding the tradition of "Rose Day" in our school. On an appointed day the sophomores sell roses singly or by the dozen to fellow students, faculty, and friends. The proceeds of this sale gives to the class the sense of unity and stability which can come only with sound financial rating.

The social event of this year is the "Sophomore Hop" which is the first night event they are permitted to sponsor.



TOP ROW—L. Muth, J. Vorwald, K. Winrotte, D. Barnes, G. Haddix, M. Knaizl, E. Kelley, C. Dembosky, E. Kjelstrom, C. Feliniak, J. Einikis, R. Mandly, H. Sunderman, S. Rajkovich.

THIRD ROW—M. Sut, R. Modrowski, F. Stanislaw, M. Kinder, H. Lukasiak, J. King, J. Horan, M. Kepshire, J. Butcher, W. Feckner, L. Gibbs, W. Hixon, J. Macy, B. Phillips.

SECOND ROW—J. Tomasic, R. Miller, J. Milchak, S. Elibasich, A. Koss, G. Douglas, J. Ender, J. Londenber, M. Leary, M. Batusic, S. Fronczek, G. Ob-senica, R. Raub, J. Utofka.

BOTTOM ROW—R. Phillips, D. Metz, B. Younkin, L. Kobylanski, E. Garapic, D. Holler, C. Carlson, O. Gvozdic, A. Esping, M. Tichac, J. Monroe, J. Wilczynski.

CLASS OFFICERS

Jean Underwood, President

Howard Sunderman, Secretary-Treasurer

CLASS COLORS

Blue and White

SOPHOMORES



Upper Group

TOP ROW—J. Pisarski, B. Kempinski, T. Vargo, O. Doshan, L. Pester, D. Keeney, B. McCown, D. Estes, M. Berlien, L. Kosanovich, B. Helfrich, C. Skoro.

THIRD ROW—H. Sparks, W. Zabinski, J. Gielniak, C. Ponzio, A. Yovich, D. Leets, A. Szikora, D. Harding, E. Thomas, B. McClune, R. Vasil, T. Brasiach.

SECOND ROW—J. Vukin, B. Riester, J. Underwood, L. McKinney, J. McAllister, W. Hansen, T. Markovich, E. Huston, W. Garapich, T. Curley.

BOTTOM ROW—L. Sackman, R. Koss, S. Bryant, E. Murphy, P. Williams, B. Muldowney, I. Choka, N. Eisenhauer, F. Podrebarac, R. Redding.

Lower Group

TOP ROW—M. McCleery, P. Rongers, A. Reey, I. Perry, B. Blash, E. Sowards, D. Sharpe, M. Stefanchik, E. Tomlonovich, D. Spahr, M. Sylvester, E. Schmidt.

THIRD ROW—V. Apolzan, K. Laudien, J. Flynn, H. Jannasch, J. Hollman, J. Hayes, J. Cook, P. Hill, W. Kern, J. Loucks, V. Krijci, W. Gill.

SECOND ROW—T. Hrabota, V. High, P. Kish, D. Roknick, M. Robinson, K. Smith, M. Tichac, A. Pusateri, A. Hartnett, W. Laster, M. Bowser, C. Brooker.

BOTTOM ROW—R. Bass, P. Adler, C. Hay, M. Roberts, E. Rasek, B. Menhennett, J. Squires, M. Rigich, L. Skidmore, P. Churchill, J. Haller, J. Ladra.

FRESHMEN

The high light in the calendar for freshmen is the "Frolic", a party of dancing and games which freshmen and guests from the eighth grade may attend. This is the only extra-curricular event sponsored by the Freshman class because the members of this group are kept busy orienting themselves to new situations and getting accustomed to responsibilities that begin in earnest in the Sophomore year.



TOP ROW—W. Sablotny, J. Spaulding, A. Twombly, N. Sisler, S. Reichardt, L. Notley, H. Wotherspoon, A. Sark, E. Stephens, C. Wolozanski, N. Christoff, N. Shabowski.

THIRD ROW—R. Nelson, R. Foster, R. Pelke, J. Gourlay, R. Rudman, E. Soderstrom, G. Stults, E. Szoka, P. Roberts, M. Rochford, D. Shafer, B. Collette, A. Egbert, R. Reichard.

SECOND ROW—C. Scherrens, A. Einikis, C. East, V. Yuraitis, M. Wilson, M. Schoon, J. Smith, H. Siget, J. Tuel, K. Razumich, E. Zeigler, R. Troup, S. Roberts, H. Valse.

BOTTOM ROW—P. Sgouros, R. Crane, C. Schoonover, R. Swan, M. Wahley, L. Nanavich, D. Thorgren, V. Vrlich, E. Szymanski, M. Vidmich, G. Solich, S. Gehrs, J. Dobrian, M. Fisher.

CLASS OFFICERS

Dan Jenkins, President

Shirley Reichardt, Vice President

Vera McHenry, Secretary-Treasurer

FRESHMEN



Upper Group

TOP ROW—R. Hall, G. Burke, M. Matthews, H. Kozicki, I. Lewandowski, P. Kettles, M. Basta, M. Karagin, L. Kentopp, M. Macaluso, G. Haffner, J. Mericsko.

THIRD ROW—P. Sasayko, H. Sykes, M. Mitchell, A. Novotny, S. Jedlikowski, V. McHenry, B. Finch, B. Pantelich, N. Kosto, D. Helwig, P. Jasko, B. Johns, B. Marston, W. Helbling.

SECOND ROW—L. Leonard, E. Nering, R. Linch, D. O'Bradovic, M. Muth, J. Bell, P. Hanson, M. Perreux, P. Brown, C. Podrebarac, R. Ornelas, A. Morgan, M. Heiny, S. Nuzzo.

BOTTOM ROW—E. Mandich, D. McKinley, J. Lyons, B. Quinn, M. Jaeger, E. Harper, H. Merrill, W. Harmack, M. Crabb, D. Morris, W. Myers, J. Kepchar, P. Kroeger.

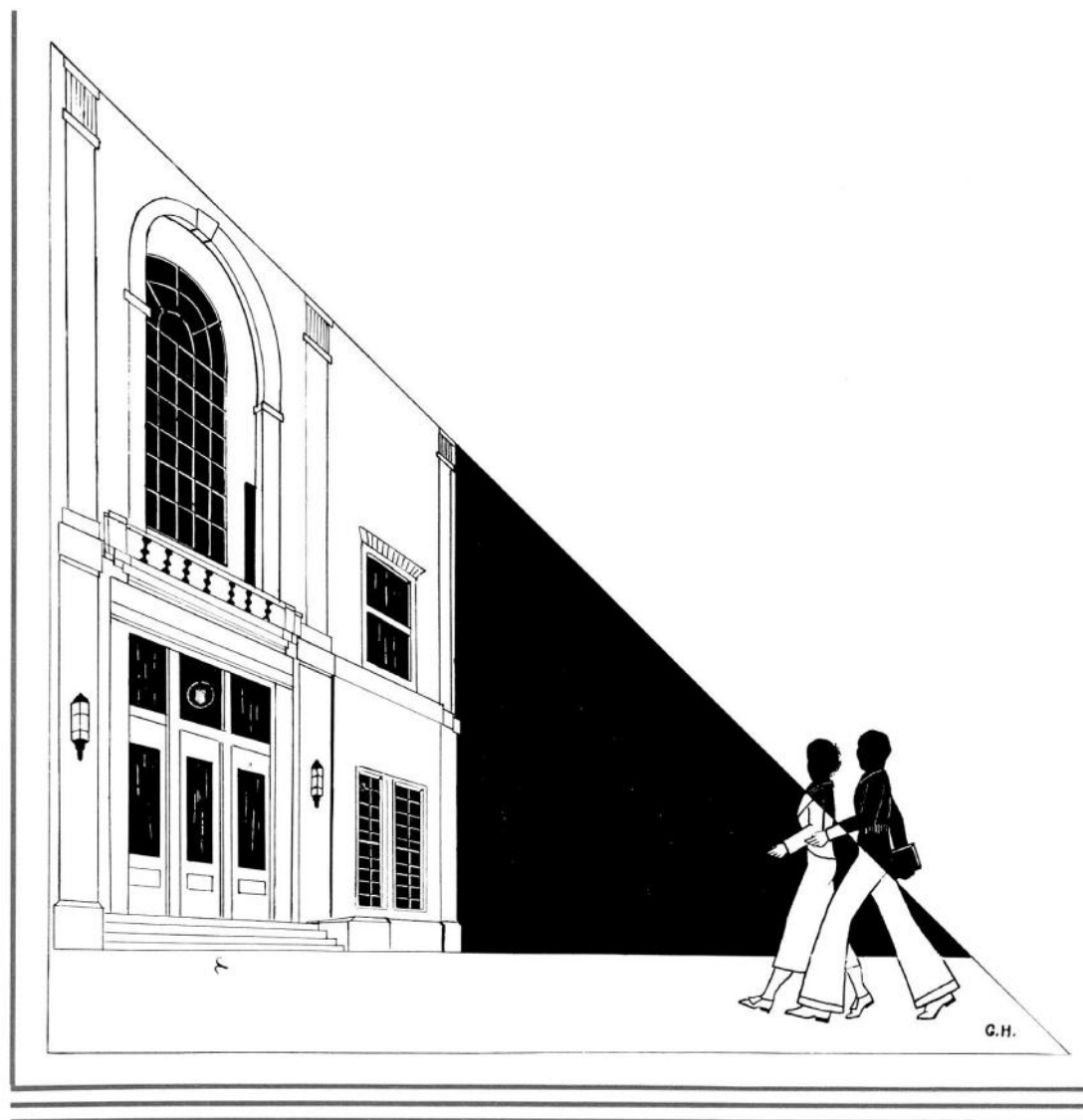
Lower Group

TOP ROW—E. Sparks, C. Fisher, F. McColly, F. Elot, E. Smith, J. Fox, M. Chiapazza, R. Anderson, J. Guzzo, M. Doherty, D. Hoppe, W. Garriott, D. Jenkins, W. Beasey.

THIRD ROW—H. Sanko, G. Solich, J. Bristow, A. Craig, M. Boyd, V. Britton, H. Dinwoodie, M. Broker, E. Anderson, E. Griffith, H. Wilhoyte, H. Englehart, C. Popovich.

SECOND ROW—R. Shepherd, L. Reey, J. Rankin, J. Briggs, D. Gielniak, B. Bates, D. Danko, L. Goodner, M. Fronek, R. Guzowski, G. Urbanick, J. Sunny, E. Riley, T. Piekarz.

BOTTOM ROW—W. O'Boyle, F. Kendall, J. Slocum, V. Tomaszewski, O. Christoff, C. Hlodnicki, H. Shuller, M. Akers, J. Blaschke, H. Howath, T. Shabowski, M. Phillips, J. Petrach, M. Zvonkovich.



ACTIVITIES

AUDITORIUM

The auditorium period is the hub around which the cycle of school activity rotates. Every phase of student activity is brought to this focal point where it may be of interest and intellectual worth to the students participating and observing. The period is designed to adjust children to modern social life. The student is first of all a person and as such must learn to live with people.

The students enrolled in auditorium are organized into groups of similar interest, capabilities, and age levels. Teachers who are specially trained for this work are given full time for instruction and are responsible for results. The group freed from class room restraint and text books is afforded an opportunity to develop initiative, freedom and resourcefulness. The greater part of the activity rests in the hands of the students under the guidance of the teacher. The meetings are conducted according to parliamentary procedure with a regularly elected chairman and secretary presiding. Current topics and matters of school concern are presented. Student programs covering a wide variety of student interests are offered to a student audience which reacts frankly to each contribution under the intelligent direction of the instructor. Children develop poise, assurance, and the habit of critical analyses from these experiences. At all times the best in music, drama, and other forms of literature is presented with the intent of developing appreciation, affording wholesome enjoyment, and stimulating the ability to evaluate worthwhile material.

The auditorium period is so designed that the student may receive training by specialized teachers in a score of activities. The first part of the hour is given over to music appreciation and community singing under the direction of music teachers. During this time the student comes to know and appreciate the music of the great composers, to recognize various dance forms, and to become familiar with the folk music of the world. The student is encouraged to enjoy the best of both vocal and instrumental music. It is from the auditorium that the students are taken for individual voice training for solo contests and leads in operettas.

During the latter part of the hour, students participate in trained class-room programs, dramatic presentation, free discussions, critical comments, or in the duties of the presiding officers. At intervals during the year every student receives intensive instruction in speech technique for a period of five weeks. This course comprises twenty-five sixty minute speech lessons. The speech techniques he has studied are constantly applied and followed by every teacher in the department. Periodically each student receives instruction in the application of speech principles through presenting plays and programs; and finally he receives the critical comment on his work presented to a real audience as a criteria upon which to build for future development. Thus he learns the principles and technique of good speech, he learns how to apply them, and does apply them in real situations and immediately learns what his results are. The students learn not only from the experiences of their fellows but from outside speakers who appear from time to time as a part of the latter half of the auditorium hour.

The motion picture program presented by the Visual Education Department brings the far corners of the earth into our auditorium as well as the marvels and mysteries of science and industry. One day a week the program hour is given to the material projected on the silver screen. This year we have adopted "talkies".

The auditorium, that is the school center during the day, readily becomes the community center one night a week when concerts, class plays, motion picture programs and entertainment originating in the community itself are presented. Thus the child while still in school contacts and develops a real interest in an understanding of community interests.

The school-community interests are further fostered and promoted by the Auditorium Council, made up of representative students from each of the six auditorium groups and organized for that purpose. Ushering and the business arrangements incident to all community night projects are taken care of by the council which rounds out the purposes of the auditorium to promote a program through which students may live understandingly, congenially and usefully with their fellows.

MATTIE G. HANNSZ.



Various activities which have appeared in the auditorium are pictured here as well as a view of the attentive audience. In the upper left hand corner we find a group of girls demonstrating the successful construction of a garment and beside them a group advertising work in the typing class. Below are students showing what pencils can do in mechanical drawing. Pictured also are scenes from an opera, voice and diction group, a display from the metal shop, posters from the art department, a mathematics program and a special Valentine Day play.



The greater number of these pictures show plays produced on the auditorium stage. We find the sophomore play, "Rebecca of Sunnybrook Farm," "Santa Claus Toy Shop," "The King of the Golden River," a dramatization from "Ivanhoe," and a group pantomiming some Riley poems. To the right center is a group from the chemistry class showing fire and its prevention, and in the lower left hand corner the debating team is seen "in action." The last view is of the opera, "The Marriage of Nannette." These glimpses comprise a cross section of auditorium activities.



AUDITORIUM COUNCIL

TOP ROW—C. Raub, H. Englehart, P. Hill, E. Maravich, N. Sisler, M. McCleery, H. Hottetz, E. Livingston, J. McAllister, D. McKnight, S. Chicos.

SECOND ROW—J. Haller, J. Shaver, J. Ender, A. Dumond, J. Slick, Mrs. Hannsz, E. Swigart, E. Fauver, V. Churchill, L. Chittum, T. Englehart, H. Sunderman.

BOTTOM ROW—R. Black, R. Bass, E. Murphy, P. Brown, V. Hancock, O. Crane, F. Plummer, B. Finch, D. Green, B. Hancock, M. Kadel, B. McComb, J. Churchill.

DRAMA CLASS

TOP ROW—S. Chicos, N. Sisler, A. Dennison, E. Komenick, A. McIsaac, T. Lentin, E. Ballard, C. Raub.

SECOND ROW—E. Rodman, J. Ender, E. Baricevich, G. Sunny, Miss Harbough, L. Shockley, L. Chittum, E. Maravich.

BOTTOM ROW—H. Sunderman, B. Watson, N. Schmidt, M. Creasy, M. Brown, M. Ryan, R. Schattat, J. Weber.

The members of the Auditorium Council are selected to represent every auditorium group. They meet each week to plan their work as business managers for the programs of the ensuing week.

The drama group is representative of similar groups taken from the auditorium for five-week periods to work intensively in this particular field.

MIXED CHORUS

UPPER GROUP

TOP ROW—M. Vidmich, C. Zajkowski, K. Helwig, S. Lukasiak, D. Keeney, M. Fujko, E. Dawson, R. Bahun, L. Quinn, W. Hansen, A. Garapic, M. Podge, G. Douglas, T. Nichols, M. Leary, M. Fender.

THIRD ROW—F. Plummer, S. Chicco, B. Zabinski, R. Pruitt, L. Miller, D. Harding, J. Rys, D. Spahr, M. Solay, S. Tokarski, T. Lentin, A. Szymanski, A. Yovich, R. Vasil, J. Hayes, R. Gould, C. Raub.

SECOND ROW—C. Brooker, E. Stout, R. Reichard, D. Hall, H. Carlson, A. Grzanka, M. Knaizl, A. Esping, Miss Volz, J. Hilton, O. Pantelich, B. McCown, B. Brewer, M. Berlien, R. Bartolomeo, J. Petro, R. Raub.

BOTTOM ROW—W. Laster, E. Patch, T. DeGan, J. Dennington, M. Saroff, L. Kobylanski, W. Harmack, I. Choka, J. Underwood, M. Glenn, A. Waite, W. Beasey, D. Jenkins, L. Lavery, R. Ashby.

LOWER GROUP

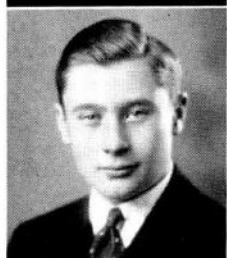
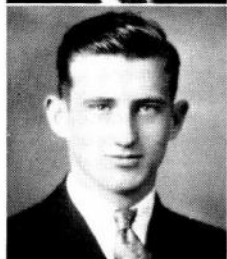
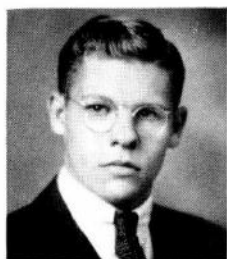
TOP ROW—H. Jannasch, E. Starr, S. Illes, H. Solay, L. Collette, M. MacPherson, M. Robinson, M. Macaluso, J. Hilton, S. Miller, Miss Egger, M. Wilson, J. Chabe, W. Marich, B. Korte, R. Fortin, A. Mackelson, W. Goodyear, J. Cook.

THIRD ROW—K. Winrotte, L. Hauprich, M. Rochford, S. Jedlikowski, L. Olson, P. Chapman, R. Costoff, F. Vidmich, G. Haddix, F. Spicer, L. Schmandt, M. Wranish, S. Hrabota, S. Sylvester, M. Guelfo, G. Helm, A. McIsaac, V. Koblanski, G. Solich, E. Murway.

SECOND ROW—W. Helbling, R. Marston, L. Schmidt, R. Redding, E. Ferrero, M. Basta, D. Gielniak, L. Skidmore, R. Prichard, B. Collette, K. Smith, E. Etchason, K. Pavlakovich, H. St. Paul, M. Kepshire, A. Einikis, F. Kraft, S. Kristoff, B. Riester.

BOTTOM ROW—C. Anderson, M. Heiny, D. McKinley, J. Lyons, H. Valse, B. Menhennett, B. Quinn, L. Nanavich, M. Akers, A. Schoonover, E. Nering, W. Myers, S. Gehrs, J. Slocum, C. Caylor.





THE BETTER • • • • • CITIZENSHIP ORGANIZATION

The Better Citizenship Organization endeavors to prepare students for the duties of active intelligent citizens by providing situations and responsibilities similar to those confronting the average citizen.

All pupils from the sixth grade through the senior class are active voting members of the organization and subject to its rules.

The legislative unit of the organization is the Student Council which is made up of the officers chosen in the fall election and a councilman from each register class. Each councilman is responsible for presenting in the weekly council meeting the problems of his class, for voting his class opinions, and for carrying back to them the business conducted by the Council. The general purpose of the Council is to promote all matters of school interest and to develop responsibility through student participation. The Council has devoted itself this year chiefly to the task of selecting and preparing material for the register class hour. Programs dealing with such topics as character, scholarship, vocations, and the selection of the proper college have been presented.

Other units of the B. C. O. are the Judicial Committee, Traffic Committee, and the Patrol and Monitor Systems which are responsible for the enforcement of the rules and regulations of the organization.

Pictured at the left are the competent officers who were elected by the student body in October. Through diligence and effective leadership, they have guided the organization through an unusually successful school year. They appear in the following order: Edwin Garriott, president; Dale Langley, judge; Mary McCleery, clerk; and James Crocus, patrol captain.

Below is the Student Council which served in the autumn before the new Council was elected.

TOP ROW—H. Maravich, V. McHenry, M. Rochford, A. Koss, M. Ryan, D. Mark, E. Tomlonovich, E. Parry, A. Lucas.

THIRD ROW—E. Murway, D. Langley, T. Curley, J. Ornelas, L. Olson, M. Hill, L. Allegretti, S. Tormohlen, R. Foster.

SECOND ROW—J. Mason, J. Crocus, H. Wilhoyte, B. Brueckheimer, J. Smith, B. Bates, A. Novotny, B. Hancock, R. Leary, F. Maxin, R. Ashby.

BOTTOM ROW—C. Casale, B. Mock, L. Pester, M. Wotherspoon, D. Nelson, E. Livingston, J. Weber, B. Muldowney, J. Opydo, P. Sackman, V. Hoffman.



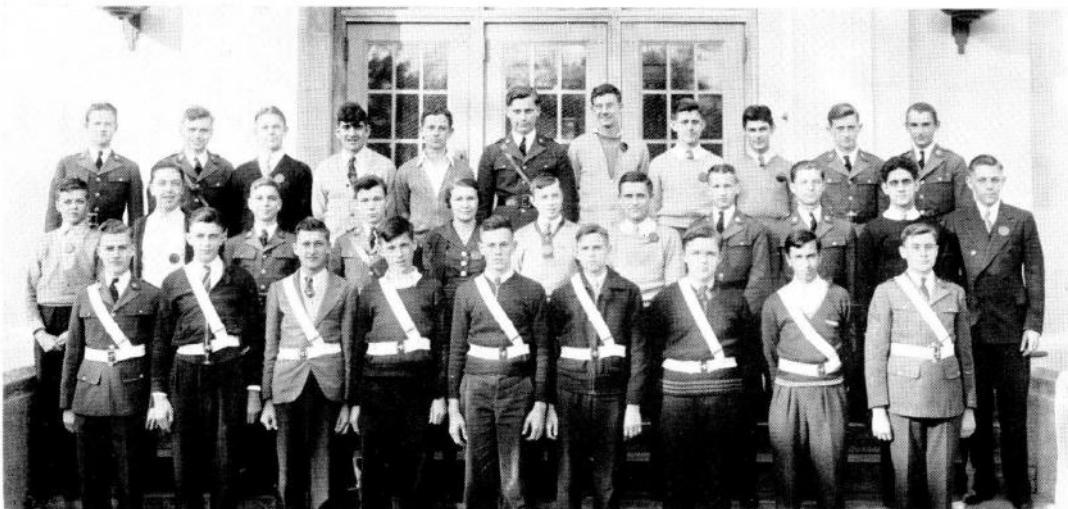
SCHOOL BOY PATROL

The primary purpose in organizing school boy patrols is to prevent injuries to children while on their way to and from school. At the same time qualities of leadership and good citizenship are being fostered in patrol members through placing on them the responsibility for assisting others and actively participating in the accident prevention program. The Lew Wallace patrol was organized in 1927 with ten boys directing inter-class traffic inside the buildings so that students might more quickly and quietly move to and from classes, and four boys stationed outside at the street intersections to assist children crossing the streets and see that the traffic rules are observed.

The flag squad and buglers were next included and finally the girls auxiliary was organized to augment the work of the patrol. The hall monitors, the latest development of this program, are held responsible for keeping halls quiet, checking student movement while classes are in session, receiving, directing and guiding all visitors and allowing no child to leave the building with an unauthorized person. The nine outside patrol members with their captain are directed by John Hayes and Russell Adams. The inside patrol or hall guards numbering thirty-nine, the ten members of the girls' auxiliary who take charge of the girls' washrooms and drinking fountains, the three buglers who are responsible for calling and dismissing the school sessions at the raising and lowering of the flag and the flag squad, all work under the supervision of Paul Carlson and Lola Lemon.

The entire patrol system is a part of the Better Citizenship Organization.

TOP ROW—C. Davis, J. Weber, L. Hauprich, E. Svetanoff, L. Mroz, E. Aleich, C. Hill, R. Pence, A. Petrovich, D. Langley, J. Petro.
SECOND ROW—E. Riley, F. McQuillin, A. Morgan, D. Irwin, E. Dawson, E. Lloyd, J. Uhlir, W. Beasey, B. Guzowski, R. Bartolomeo, E. Murway.
BOTTOM ROW—D. Jenkins, G. Solich, A. Koznicki, B. Liddell, J. Barcus, A. Nasiloski, R. Reichard, E. Lasko, J. Crocus.





SENIOR HONOR SOCIETY

TOP ROW—E. A'cich, E. Spanich, R. Reister, Miss McLean, Dr. Shelley, Miss Helmerick, D. Nelson, E. Bell.

SECOND ROW—J. Ornelas, A. McIsaac, M. Brek, A. Spsychalski, E. Murway.

BOTTOM ROW—V. Johnson, R. Kentopp, M. Remus, E. Dawson, A. Fox.

JUNIOR HONOR SOCIETY

TOP ROW—H. Sunderman, J. Barcus, E. Murway, B. Collette, V. Johnson, L. Baumgartner, M. McCleery, D. Spahr, E. Griffith, M. McConnell, R. Reichard, W. Garriott, W. Zabinski, R. Nelson.

THIRD ROW—J. Slick, A. Dumond, E. Swigart, L. Hielscher, V. McHenry, J. Haller, V. Churchill, E. Kelley, M. Knaizl, G. Haddix, E. Dawson, A. Esping, S. Reichardt.

SECOND ROW—J. Charlton, E. Chiabai, I. Liber, H. Petroff, B. Burford, R. Anderson, Mrs. Connerley, B. Bates, B. Menhennett, B. Quinn, M. Remus, R. Johnson, E. Zeigler.

BOTTOM ROW—D. McKinely, J. Chandler, C. Markovich, J. Bell, V. Yuraitis, R. Heal, E. Garriott, R. Kentopp, J. Underwood, R. Swan, M. Akers, R. Bass, E. Esping.

Membership in either honor society is based not only upon scholarship, but leadership, service, and character.

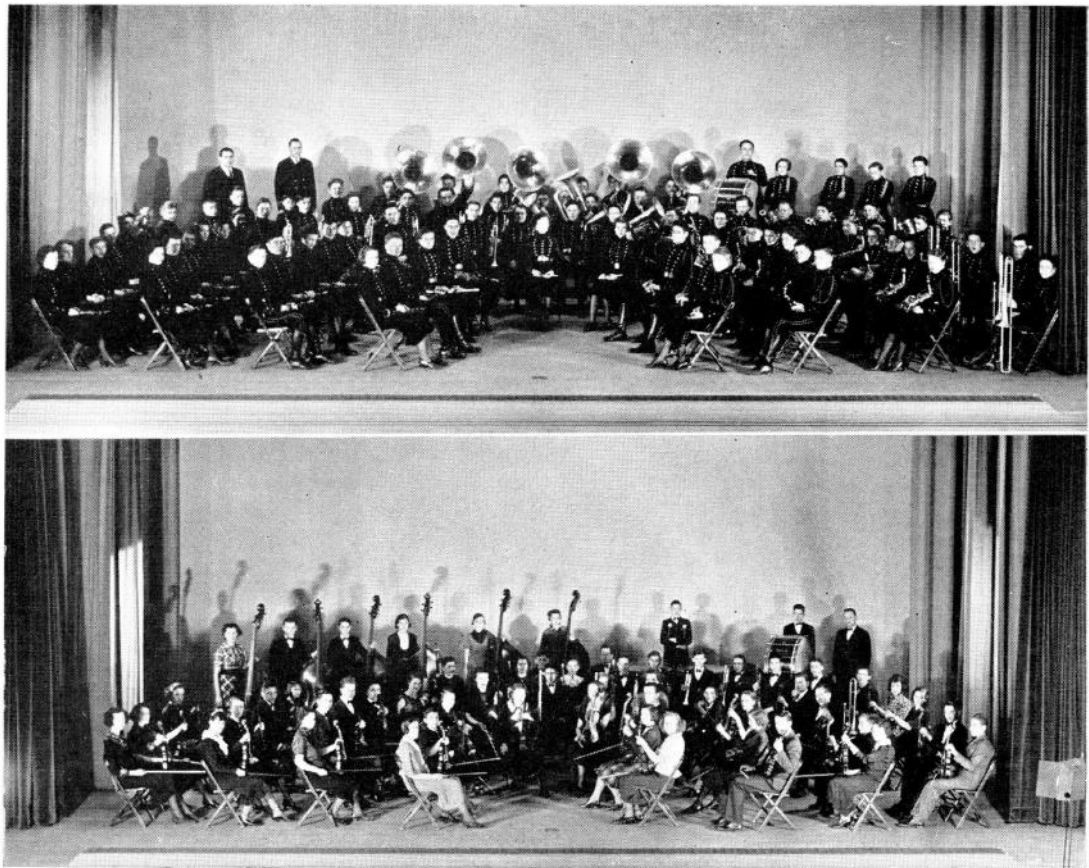
Eligibility is determined by teachers' marks but only the students are invited to membership who can unquestionably qualify in the three additional fields. Junior Honor Society members are not automatically included in the Senior Society but standing must again be earned to qualify for this organization. Membership in either group is a signal honor which may be bestowed upon any student in our school.

BAND

FLUTE AND PICCOLO—R. Reister, R. Bartolomeo, W. Harmack, L. Gardner. OBOE—J. Underwood. CLARINETS—D. Zweig, K. Laudien, E. Smith, S. Kristoff, J. Briggs, R. Lanham, E. Tomlonovich, J. Sammy, D. Estes, B. Finch, A. Waite, O. Lynn, V. Yuratis, J. Tuel, J. Davis, M. Helfrich, J. Draper, F. Stanley, G. Sammy, B. Pantelich, J. Cutro, J. Sullivan, S. Schilling, G. Hilton. ALTO CLARINET—L. Sackman, J. Reinerio. BASS CLARINET—D. Spahr, H. Wotherspoon. BASSOON—E. Cook, H. Wilhoyte. ALTO SAXOPHONE—J. Squires, N. Sisler, M. Day. TENOR SAXOPHONE—M. Kadel. BARITONE SAXOPHONE—F. Kraft. CORNET—W. Beasey, E. Dawson, E. Christoph, P. Cokusis, W. Goodyear, E. Jansen, J. Bell, H. Valse, C. Churilla, J. Cook, C. Scherreus, K. Dull, R. Pritchard. HORNS—T. Spencer, V. Garner, W. Laster, H. Vrska, R. Raub. BARITONE—V. Washburn, F. Tomlonovich, D. Stimson. TROMBONE—R. Bass, R. Vasil, F. Dettman, R. Toby, J. Loucks, H. McLaren. S. Underwood. BASS—R. Hegji, H. Jannasch, R. Pelke, A. Slocum, J. Manion, R. Specht. SNARE DRUM—Armstrong, G. Cokusis, C. Anderson, T. Collins. BASS DRUM—A. Michelson.

ORCHESTRA

1ST VIOLIN—N. Armstrong, P. James, D. Estes, A. Borch, I. Perry, S. Tormohlen, M. Sylvester, J. Tuel, F. Plummer, J. Haller, E. Murway, L. Pester, J. Rys. 2ND VIOLIN—J. Einikis, D. Mushinsky, P. Adams, M. MacPherson, H. Kosicki, G. Wheeler, G. Zervos, R. Starr, A. Einikis, D. Shafer, K. Smith, M. Tropp, H. Sponder, A. Siget. VIOLA—D. Sackman, D. Harding, J. Dennington, A. Craig. CELLO—E. Dawson, D. Leets, J. Squires, M. Linsbeck. BASS—R. Costoff, H. Smith, M. Watkins, K. Dembosky, R. Anderson, P. Brown. FLUTE—R. Bartolomeo, M. Montz. OBOE—V. Johnson. CLARINET—D. Zweig, E. Smith, S. Kristoff. BASSOON—A. Tomlonovich. HORN—I. Anderson, R. Raub, D. Eddy. TRUMPET—W. Beasey, E. Christoph, R. Ashby, E. Jansen. TROMBONE—F. Dettman, J. Loucks. PERCUSSION—F. Jannash, F. O'Boyle, G. Cokusis. DIRECTORS—Mr. Hendrickson, Mr. Bobele.





GLEE CLUB

TOP ROW—L. Groza, J. Ender, H. Davis, L. Spindler, D. Winrotte, E. Griffith, D. Helwig, V. Kelley, J. Einikis, D. Coppess, A. Szikora, G. Reed.

THIRD ROW—L. Notley, M. Batusic, M. Parsons, A. Pusateri, J. Butcher, N. Stovall, Miss Egger, C. Dembosky, N. Sisler, S. Wallace, B. Weaver, H. Smolkovich, L. Blaylock.

SECOND ROW—J. Bell, H. Kozicki, V. Wadas, H. Tolpa, E. Zeigler, D. Basta, M. Blaschke, Miss Volz, C. Carlson, D. Barnes, G. Braselton, E. Klodzen, A. Hartnett, B. Finch.

BOTTOM ROW—R. Owen, P. Williams, H. Charvat, A. Marinak, A. Shafchuk, E. Garapic, E. Harper, T. Markovich, E. Smith, R. Rochford, B. Bates, M. Wilson, V. Yuraitis.

LYRE CLUB

TOP ROW—R. Lanham, J. Rys, N. Sisler, B. Finch, S. Tormohlen, F. Plummer, R. Costoff, A. Tomlonovich, E. Tomlonovich, D. Spahr, E. Jansen.

SECOND ROW—R. Pelke, D. Estes, J. Underwood, D. Zweig, V. Johnson, Mr. Hendrickson, J. Tuel, I. Perry, L. Waite, J. Briggs.

BOTTOM ROW—N. Armstrong, I. Anderson, W. Beasey, W. Crain, E. Dawson, W. Goodyear, E. Blankley, J. Squires.

LeW Wallace School boasts two clubs among its extra-curricular organizations whose chief interest lies in music. The Glee Club is made up of the students who have been selected by their instructors as members of this group because they like to sing.

The Lyre Club is composed of students whose interests lie in the field of instrumental music; the members are also in band or orchestral units.

The Vivi-Darians and Sphinx are largely social organizations whose members are chosen from the junior and senior classes. The girls strive to promote good fellowship and friendliness among the student body, evidenced by the annual teas for girls of the freshman-sophomore classes and junior-senior classes.

The boys have been of service to the school on numerous occasions. During the past year their chief contribution was a careful compilation of material concerning extra-curricular activities.

VIVI-DARIANS

TOP ROW—R. Bahun, A. Fox, S. Wallace, M. Ryan, A. McIsaac, R. Heal, E. Livingston, F. Vidmich.

SECOND ROW—J. Burriss, E. Dawson, R. Kentopp, Miss Tuck, Miss Helmerick, A. Ziegler, I. Anderson, V. Johnson.

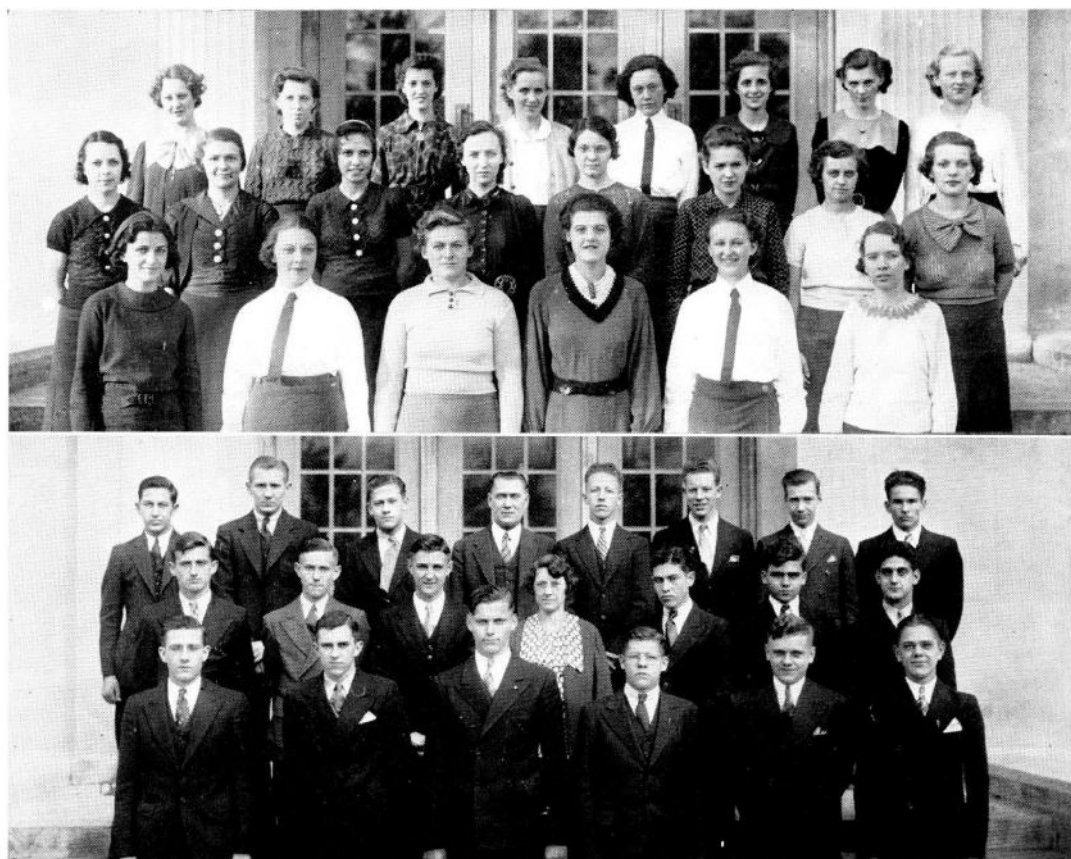
BOTTOM ROW—M. McConnell, L. Quinn, D. Knight, E. Ballard, D. Matthies, B. McNary.

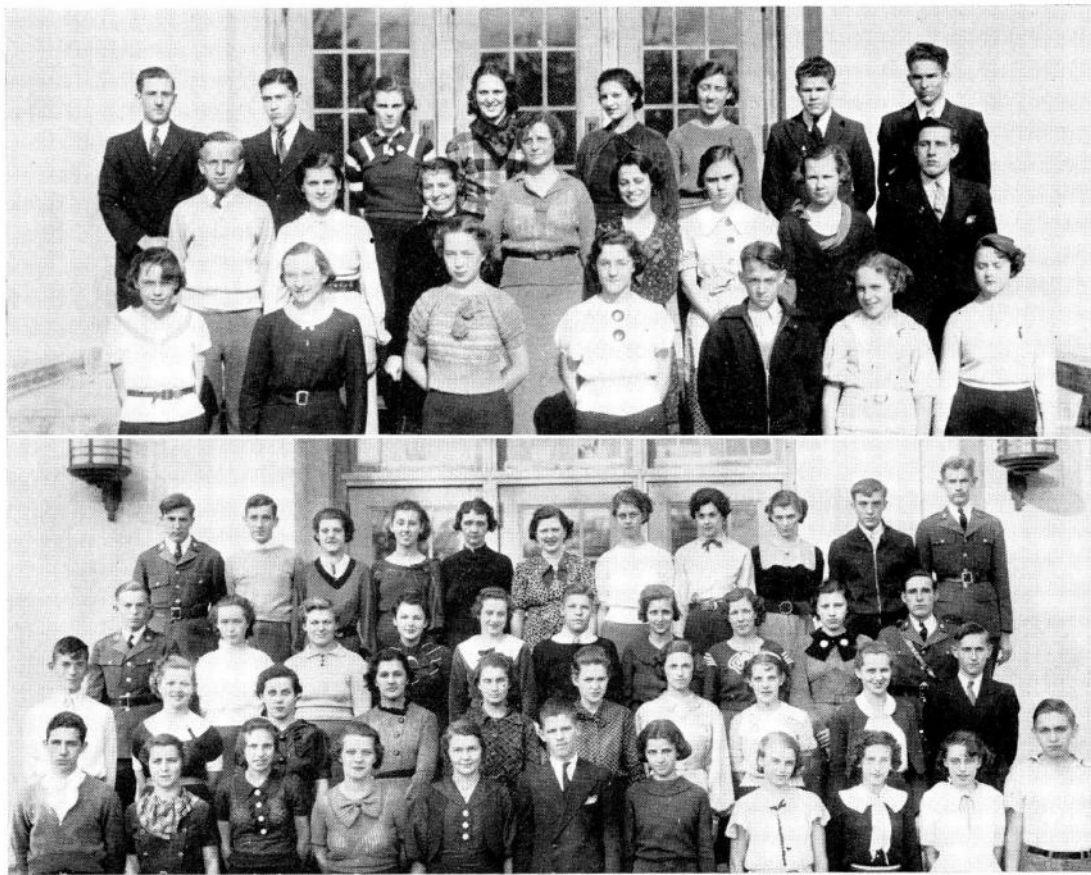
SPHINX

TOP ROW—N. Poulos, A. Bodney, J. Kern, Mr. Tormohlen, S. Chicos, F. Plummer, T. Moore, W. Christoff.

SECOND ROW—D. Langley, D. Nelson, C. Novotney, Miss Richardson, J. Ornelas, D. Stimson, R. Bartolomeo.

BOTTOM ROW—E. Stout, H. Vorwald, E. Alcich, E. Garriot, J. Weber, L. Hauprich.





INKPOT

TOP ROW—E. Stout, J. Ornelas, E. Livingston, V. Kelley, T. Lentin, M. Sylvester, E. Bell, W. Christoff.
 SECOND ROW—B. Collette, B. Watson, D. Zweig, Mrs. Ensweiler, B. Brewer, R. Anderson, H. Hansen, C. Raub.
 BOTTOM ROW—M. Remus, W. Crain, V. Churchill, W. Crain, J. McKeighen, M. Akers, B. Quinn.

OLYMPIANS

TOP ROW—F. Broker, J. McAllister, E. Ballard, M. Sylvester, Miss McLean, A. Slocum, D. Spahr, M. McCleery, E. Livingston, R. Avery, W. Zabinski.
 THIRD ROW—H. Sunderman, V. Churchill, D. Knight, B. Weaver, D. Mark, E. Garriott, R. Heal, B. McCown, V. Koblanski, C. Raub.
 SECOND ROW—R. Redding, M. Berlien, B. Menhennett, A. Raffail, M. Knaizl, A. Zeigler, M. Batusic, A. Esping, M. Ryan, D. Nelson.
 BOTTOM ROW—F. O'Boyle, D. Zweig, R. Kentopp, V. Johnson, E. Dawson, B. Riester, M. McConnell, J. Underwood, L. Koblanski, M. Remus, V. High.

The Inkpot and Olympian clubs are groups of academically inclined students. The Inkpot group is interested in creative writing and fosters that individual talent which seeks expression.

The Olympians cherish the language, ideals, and customs of antiquity and strive to familiarize themselves with these sources. Membership is drawn from the Latin classes.

The social committee has under its supervision all social events held in our school and cooperates with those in charge of the Military Ball and Junior-Senior Prom which are of necessity held in more spacious quarters than our building offers. Four students from each class are chosen by faculty members to work in this committee.

The Booster club is organized to form a nucleus from which strong "cheering" sections may develop to support our athletic teams. This group assists in the planning of "pep" meetings and other similar activities. Their financial standing is assured by the proceeds of candy sales at games.

SOCIAL COMMITTEE

TOP ROW—E. Parry, E. Starr, Mr. McBride, W. Svetanoff, R. Pence.

SECOND ROW—N. Sisler, E. Nuzzo, Miss Cheever, Mrs. Scott, Miss Brown, A. McIsaac.

BOTTOM ROW—M. Robinson, L. Nanovich, R. Bass, B. Menhennett, R. Heal.

BOOSTER CLUB

TOP ROW—E. Alcich, S. Chicos, Mr. Herod, A. Lucas, M. Henderson, P. Rongers, E. Livingston, Mr. Carlson, F. Plummer, J. Holloman.

SECOND ROW—N. Poulos, J. Kern, E. Parry, H. Vorwald, J. Ornelas, R. Bartolomeo, L. Waite, C. Brooker, J. Vukin.

BOTTOM ROW—T. Hrabota, A. Waite, R. Novasel, E. Baricevich, M. Visclosky, D. Zweig, I. Anderson, F. Podrebarac.





NEWSPAPER STAFF

TOP ROW—C. Raub, A. Tomlonovich, Mrs. Ensweiler, T. Lentin, N. Layman, D. Irwin.
 SECOND ROW—B. McAnary, W. Crain, B. Weaver, S. Wallace, M. Basta, E. Etchason.
 BOTTOM ROW—A. Grzanka, N. Armstrong, H. Carlson, D. Zweig, D. Basta, L. Gardner.

PHILOSOPHER STAFF

TOP ROW—L. Kelley, S. Illes, L. Schmandt, A. McIsaac, G. Lawson, Mrs. Clemens, Mrs. Miner, Miss Tuck, Mrs. Connerley, L. Miller, A. Tomlonovich, M. Lawson, K. Winrotte, F. Stanislaw.
 THIRD ROW—R. Pritchard, M. Fender, B. Finch, D. Matthies, S. Lukasiak, T. Lentin, M. MacPherscn, D. Sharpe, E. Bair, J. Sammy, J. Weber.
 SECOND ROW—J. Ornelas, E. Chiabai, S. Tormohlen, J. Burriss, M. McCleery, C. Mazlack, N. Kosanovich, R. Heal, M. Kenyon, J. Chabe, F. Kalamir, A. Esping, D. Irwin.
 BOTTOM ROW—P. Hanson, J. Bell, R. Anderson, B. Watson, B. Menhennett, R. Bass, D. McKnight, W. Crain, M. Akers, B. Quinn, M. Remus, B. Brewer.

Each week of the school year our local newspaper, The Gary Post-Tribune, gives the schools of the city the use of one page in the paper. Our staff collects and edits items concerning the Lew Wallace School activities of interest to the general public.

The Philosopher staff publishes our own school newspaper monthly. Under their direction this publication has blossomed from a mimeographed sheet to a regularly printed edition.

The "Quill and Blade" staff is selected by the officers of the junior and senior classes with the help of faculty advisers, from the students in the two upper classes who have made application for consideration. A place on the staff is an enviable one since only twenty may be chosen and there are usually more than a hundred applicants.

Wallace Wizards represent an alert group of art students who not only spend many leisure hours with the pencil or brush but share these pleasures with all of us through greeting cards on special days. This group is building through their artistic efforts a scholarship fund for an art student.

QUILL AND BLADE STAFF

TOP ROW—E. Aleich, C. Hill, C. Novotny, M. Brek, Mr. Carlson, J. Hilton, E. Livingston, D. Langley, E. Svetanoff.

SECOND ROW—Miss Johnson, D. Nelson, F. Wayte, M. McConnell, Miss Shelley, D. Zweig, V. Churchill, W. Greve, Miss Parnell.

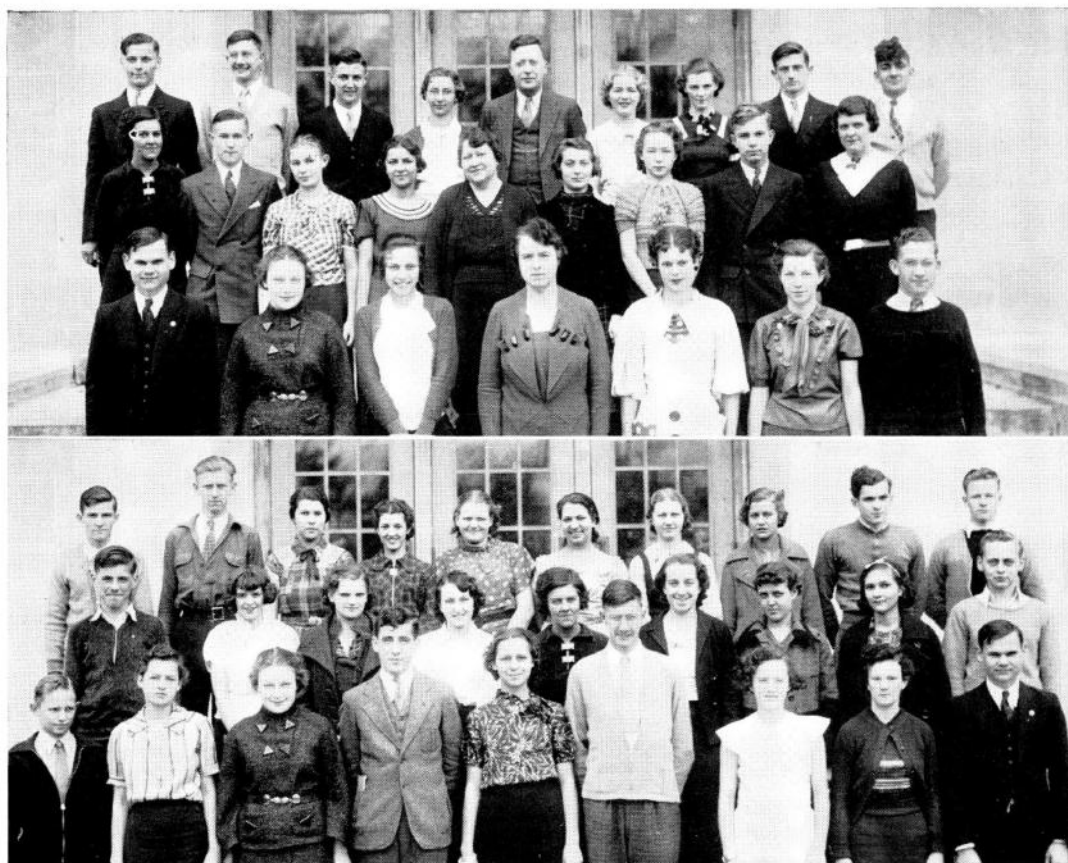
BOTTOM ROW—J. Kvortek, L. Quinn, R. Kentopp, Mrs. Greve, A. Spsychalski, A. Fox, G. Huston.

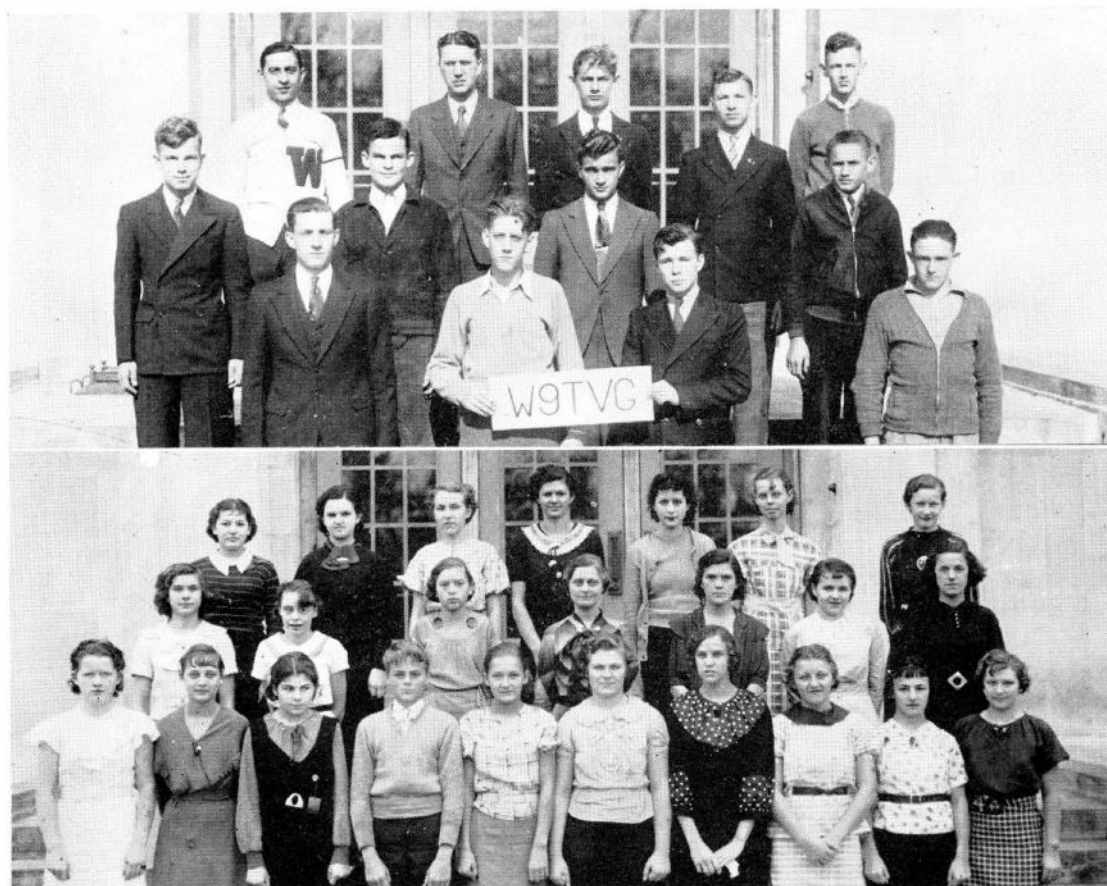
WALLACE WIZARDS

TOP ROW—E. Jansen, R. Amstein, N. Layman, S. Wallace, D. Leets, L. Spindler, P. Chapman, M. Sibincic, C. Christoff, C. Davis.

SECOND ROW—B. Liddell, V. Britton, M. Fender, S. Miller, Miss Johnson, L. Collette, L. Skidmore, A. Wagner, E. Ferguson.

BOTTOM ROW—D. McKinley, E. Zeigler, L. Quinn, J. McAllister, A. Reey, C. Hill, L. Gardner, N. Eisenhauer, J. Kvortek.





RADIO CLUB

TOP ROW—G. Sgcuros, Mr. Coons, W. Zabinski, V. Krejci, D. McKnight.

SECOND ROW—B. Greve, R. Miller, L. Matthews, T. Piekarz.

BOTTOM ROW—E. Stout, R. Bitner, D. Irwin, P. Cokusis.

BIOLOGY CLUB

TOP ROW—M. Szillagyi, R. Zaradich, E. Schmidt, J. Gaza, D. Trivanovich, M. Steen, L. Gielow.

SECOND ROW—A. Morgan, M. Remus, L. Pester, Miss Lemon, C. Dembosky, H. Kozicki, M. Batusic.

BOTTOM ROW—D. Barnes, P. Brown, E. Garapic, D. Metz, J. Sullivan, D. Knight, G. Haddix, R. Pavlakovich, M. Saroff, C. Hlodnicki.

Our school is not without special groups interested in definite branches of science.

The Radio Club has set up a short-wave broadcasting and receiving station and every evening several boys may be found "listening in" or broadcasting.

The Biology Club is identified with the state group and although in its first year of existence, has made its usefulness felt in our midst. Members were not content with paying dues but have established an "Apple Sale" as means of promoting its financial standing.

The Reading Club is organized from members of the freshman and sophomore classes for the purpose of bringing together students of like interests who enjoy sharing their book friends with each other.

The Dialists are listeners to good radio programs. They pledge themselves to listen to at least one "approved" musical program each week and they are generous in advertising coming programs of interest to us all. They have recently sponsored several broadcasts over our local station.

READING CLUB

TOP ROW—J. Kaley, Miss Shelley, J. Holloman, Miss Neeld, F. Broker.

SECOND ROW—B. Reister, J. McAllister, D. Estes, W. Hansen, B. McCown, A. Yovich, D. Spahr, C. Brooker.

BOTTOM ROW—D. Metz, B. Youngkin, S. Bryant, B. Muldowney, L. McKinney, M. Berlien, J. Utofka, R. Redding.

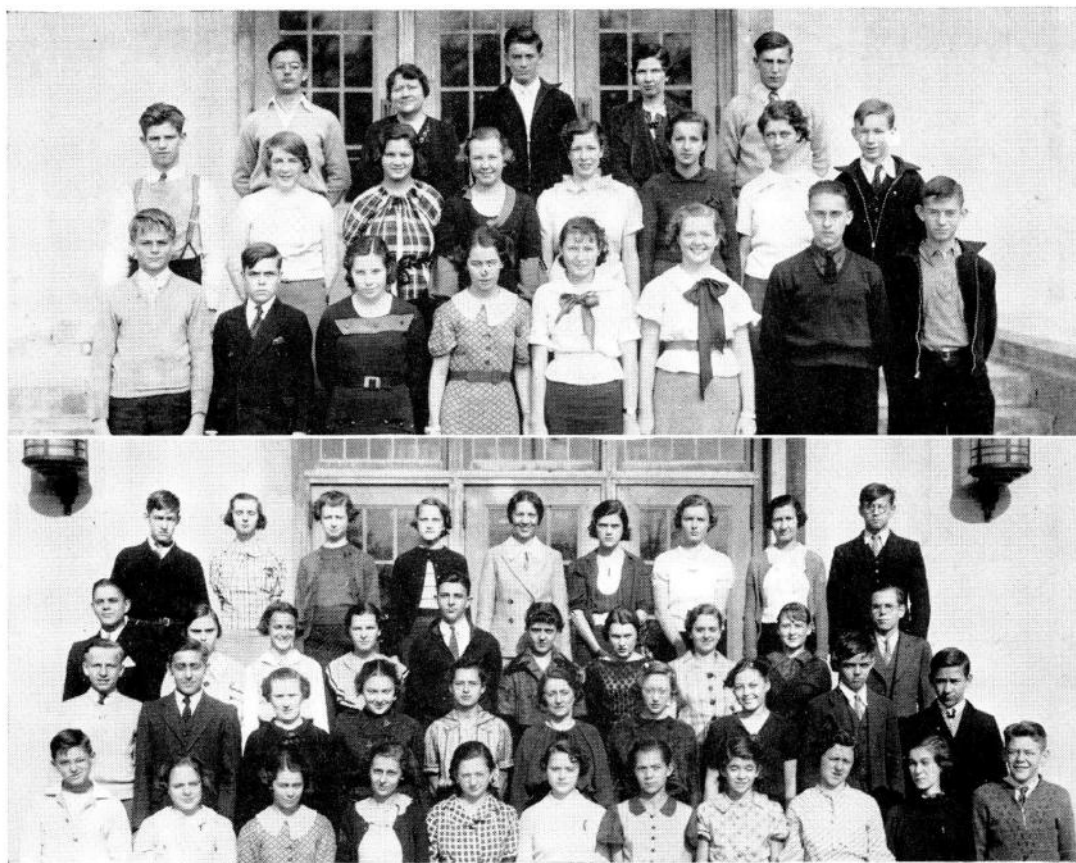
DIALIST CLUB

TOP ROW—E. Sparpo, M. Rochford, B. Finch, A. Craig, Miss Egger, C. Dembosky, S. Jedlikowski, L. Schmandt, K. Winrotte.

THIRD ROW—L. Hauprich, R. Anderson, M. Matthews, V. Yuraitis, G. Solich, L. Skidmore, E. Hildebrandt, D. Byone, E. Etchason, R. Raub.

SECOND ROW—B. Collette, B. Marston, R. Rochford, L. Quinn, E. Zeigler, Miss Volz, M. Blaschke, N. Schmidt, W. Helbling, A. Einikis.

BOTTOM ROW—J. Ladra, M. Akers, B. Muldowney, P. Williams, B. Bates, B. Quinn, I. Dembosky, P. Hanson, M. Wilson, J. Bell, R. Prichard.





Spring and autumn, summer and winter, before eight and after four, the staff photographers were "on the job" evidenced by the informal "snaps" above. However, even the photographer misses some choice bits. We discover the cart, but where, oh where is "Teddy" and the faithful green hat? Then again, we recognize some folk by their faces but for others only a view of the back of the head is necessary. Proof of this statement is found above.



Students and clerks at work, study, or play may be seen on this page. Many kinds of activity are recorded and if you look closely you may discover that the photographer has "developed" sights stranger than fiction which you may believe or not. There appears also some very genuine studies in shadows and reflections, a corner of our busy library, as well as the printing press in the art room which turns out copy on "demand."

"STUDE'S" DIARY

September 9—It's a conspiracy—that's what it is—compulsory education and getting a person out of bed at such a time—7 o'clock. But after seeing Bob and Dot and all the others, I got into the swings of things again. It really isn't bad.

September 14—The Hornets were buzzing today. They beat Hobart by a score of 25-0.

September 20—I haven't carried my books for a whole week. It isn't a new boy friend, either. The Freshman initiates were very obliging.

October 1—The first matinee dance! Page an instructor! I ruined a perfectly new pair of shoes.

October 16—I was dazzled with A's and dazed with D's when the first report cards came out today.

October 31—It was a supreme sacrifice and no compensation. I had rain dripping off my nose in a most inartistic manner leaving my "snappy sport clothes" looking like something "out" of Vogue—very much *out* in fact. Horace Mann and the dry cleaners profited—Horace Mann by two points and the cleaners by 50 cents.

November 5—I asked Mary Marg who her candidate was and she said, "Oh, that swell-looking boy in R. O. T. C.—he's a divine dancer!" I guess Edwin Garriott, Dale Langley, and Mary McCleery have what it takes because they were elected president, judge, and clerk of the B. C. O.

November 26—If Gertrude Stein could have attended the Inaugural she might have been inspired to write this witty ditty:

Speeches—formals—guests
Speeches—music—people
Speeches—speeches—speeches!

November 27—This was a hectic day but I managed to get to school to see our team usher in the basketball season with “baskets”—defeating Hammond Tech with a score of 30-21.

My favorite pastime, listening in on other people's telephone conversations, proved very profitable for once. Our neighbors received a most urgent call from their son: "Hello, Mother, I won a goose at the Palace, come and take me home. I'm on the corner of Eighth and Broadway." M-m-m was that a swell goose!

December 11—I went to the Vivi-Darian tea for Junior and Senior girls and enjoyed myself immensely, but the candy was so tempting I wanted more.

December 12—Miss Nesbit received one useful Christmas present this year. Have you seen the "adorable" little dustpan and broom?

Tonight the Sophomores revealed dramatic ability in their performance of "Rebecca of Sunnybrook Farm."

December 13—In spite of Friday the thirteenth, the first printed Philosopher was issued.

December 17—I have to give these Freshmen credit for being resourceful. Evar was sent home from the Frolic for chewing gum and Marjorie, whom he had taken, was left “on the loose.” Did she weep a “maid undone”? Not she—she just looked wistful and sighed “Oh dear” and the stag line flocked around! Evar’s greatest disappointment was getting “gypped” out of a candy cane tied with a green ribbon.

December 18—"Chuck" Novotny is so sick of oranges after the Junior's Orange Sale that he won't parade that bee-oot-i-ful track letter because it's orange. Nancy Armstrong broke all records by selling 213 dozens.

December 20—Christmas holidays have arrived with ice, snow, and a deluge of social events.



"STUDE'S" DIARY

January 6—"Hello, Mary. Haven't seen you since last year!"

January 9—The wind blows b-r-r-r (in here). We go 'round and 'round with exams, dances, plays and grades—everything goes around. In the song "it comes out here" but *we* just keep going 'round and 'round.

January 13—I saw several "forced landings" on the slippery sidewalks today.

January 14—The Sophomore Hop this afternoon and no one dared call it the Sophomore "Flop"!

January 23—"Continued colder." After it reaches 15° below, what does it matter? It's just cold. Much too cold to go to school but not too cold, I notice, to go tobogganing. What a sport! The laws of gravity play havoc with mere legs but what it does to faces is more conspicuous.

February 6—"You're mistaken; that's not the chorus—those are just leads," said Miss Egger to those of us who saw the "Marriage of Nannette," the annual opera, given today.

February 14—The G. A. A. girls doffed their rompers today and donned dresses for their Valentine Dance. What girl "sheepishly" displayed her leap year valentine?

February 29—When the time had come for all chivalrous damsels to come to the aid of their countrymen, I would go to a hen party!

March 5—While our team won the first two games in the basketball sectionals which sent them to the semi-finals, they met defeat at the hands of Emerson. The balls seemed to bounce right out of the baskets.

March 12—Another penmanship drill over with, one more finger nail sacrificed. I used to think "gliding" was a romantic word, but *not* on my nails. That old refrain is still ringing in my ears: "S-wing for the 1, cu-urve the up loo-op, s-wing below the line, g-l-lide on your nails."

March 17—I just had to wear something green, even if I'm only green with envy. Judging by the "wearin'-o' the green" there's Irish a-plenty in school.

March 19—In Memory of Hobo Day, Deceased.

March 20—The Vivi-Darians and Sphinx held their big dance this evening and a good time was had by all.

April 1—Woops—snow! Really this is one time they made a fool of April 1!

April 3—I wonder what teachers would say if the juniors used the English accent in their classes? Bloomin', eh what? Well, raw-tha, after seeing their performance of "The Admirable Crichton."

April 18—The Military Ball! I love braid and buttons. The buttons are comparatively easy to manage but I wish I might have the braid in some other form than "red tape."

May 1—This is the time when a young man's fancy lightly turns; but where, oh where?

May 23—The event of the year has arrived, but it has its disadvantages! I dieted all week to fit my new formal and then refreshments were so few I couldn't satisfy my raging appetite. The boys spent the entire week trying to earn a little money because the Prom itself isn't the biggest problem, it's where to go *after* the Prom. Of course, home isn't a bad place. Think how much more exclusive it is!

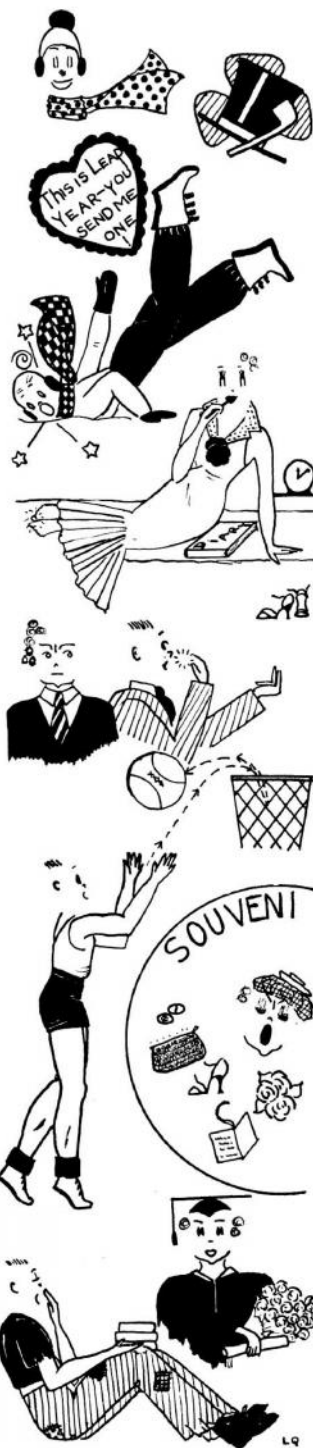
June 5—The teachers don't get criticized very much during the school year, but as Miss Shelley says, "There will come a day!" Well it came! The Seniors turned them "inside out" during Class Day exercises.

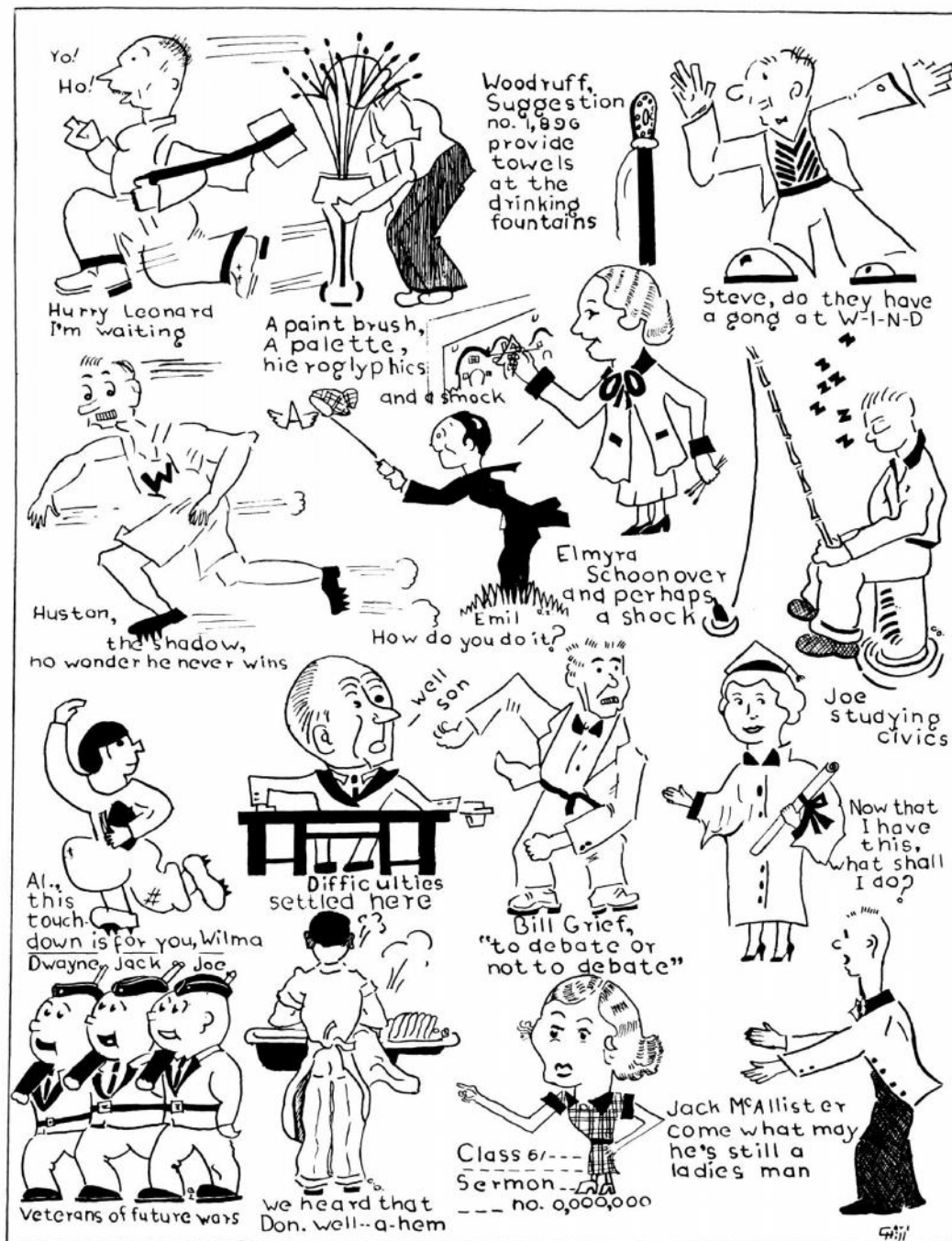
June 7—If you've never gone to church before, don't let the Baccalaureate service be your last.

June 11—"And now, young man, go rest, go rest." That's the way we'd like to commence, but unfortunately Commencement doesn't mean we're finished; it means we've just begun.

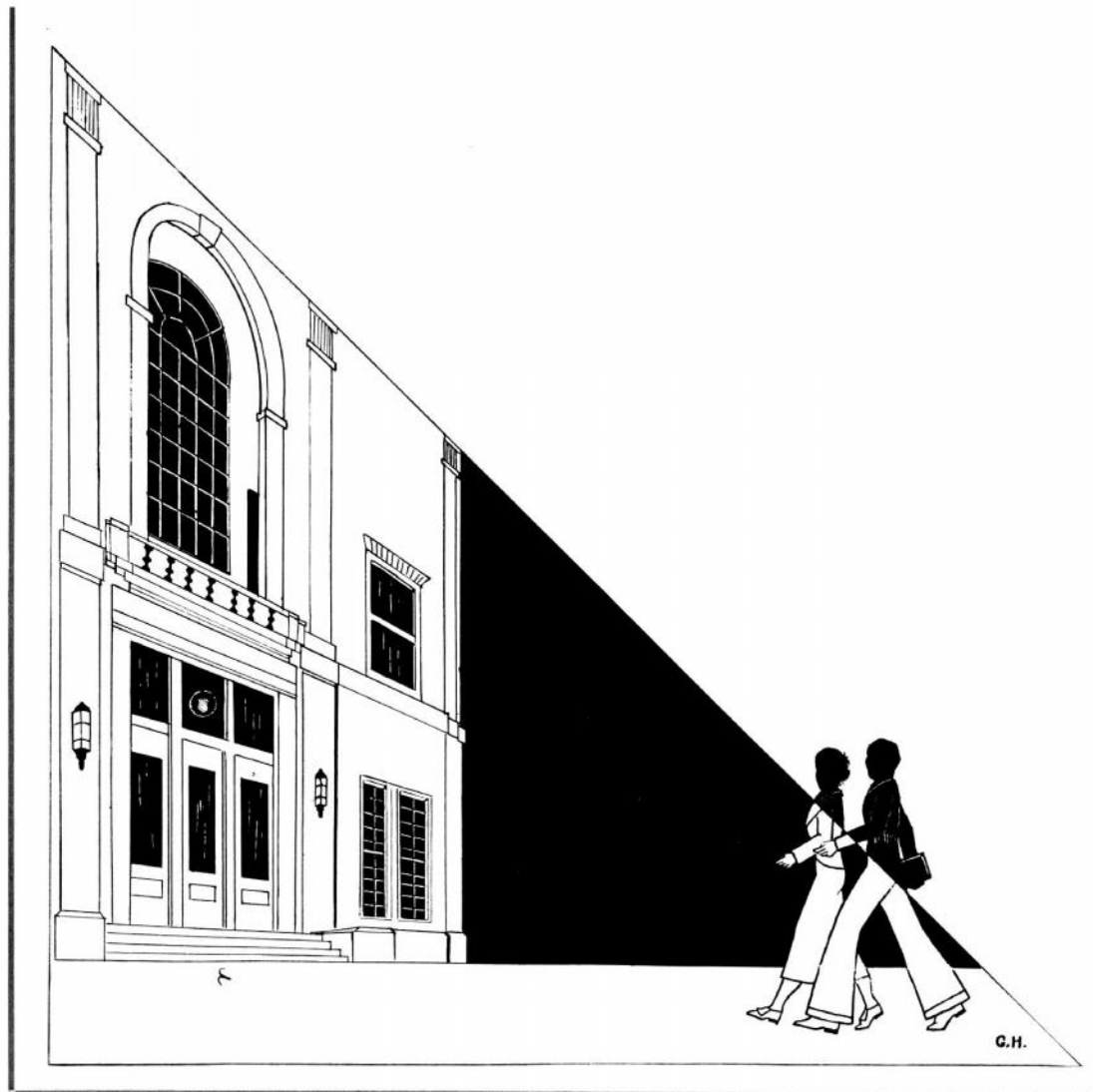
June 12—Our school days are over. We leave the school "daze" to the up-'n'-coming Freshies.

(Signed) Down 'n' Out.





The function of the cartoonist is to record in a few sketchy lines the peculiarities of a person and so exaggerate them as to appear grotesque or ridiculous. From the lad rushing to answer an imperative call to the one who asserts his niche in society, the pen of our cartoonist has wandered, touching faculty members and students alike with friendly raillery and humor, so that we can laugh with them in some of the less serious situations of school life.



PHYSICAL EDUCATION



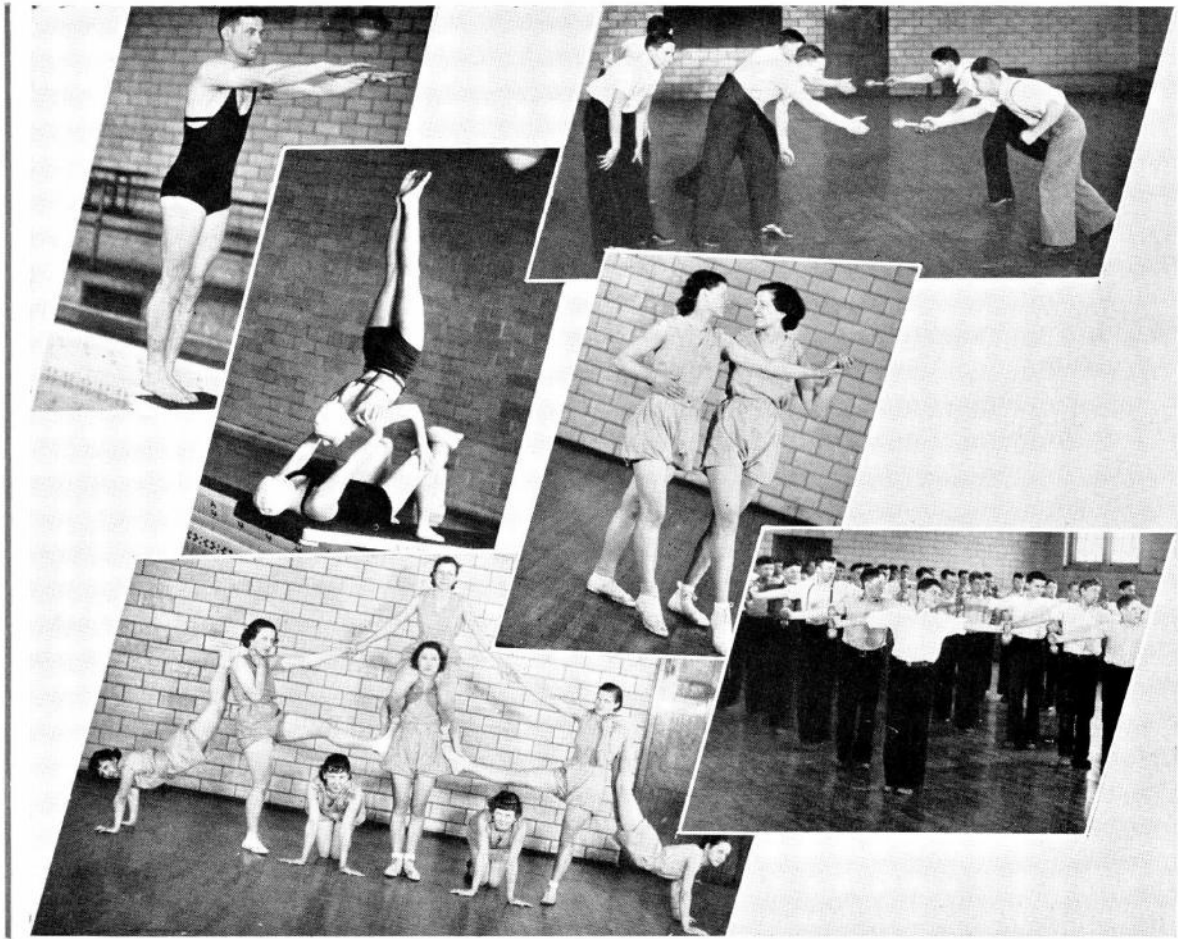
DIRECTORS THREE

"Dick" Polk sorts and moulds freshman material into potential football players for the varsity and when the last game of the season has been played, moves into the basketball season with an enthusiasm that carries over to his teams and the student body. These duties combined with conducting his share of the physical education classes and his responsibility of selling his men the idea of "keeping eligible" are work enough for one man.

"Andy" Hatrak catches them young in his "gym" classes and on the side develops "stars" in the cross country indoor and outdoor events. If you have the stuff out of which track men are made and you expose yourself to "Andy" there is no reason why you may not be another "all state" champion.

Our football mentor, "Chuck" Baer, pilots the eleven through all sorts of seas. The competition is stiff in this major sport, but he comes through the season regularly with his share of winning games and an ever watchful eye toward preventing serious casualties. The swimming team which has been entrusted to his guidance is showing marked improvement each season.

PHYSICAL DEVELOPMENT FOR

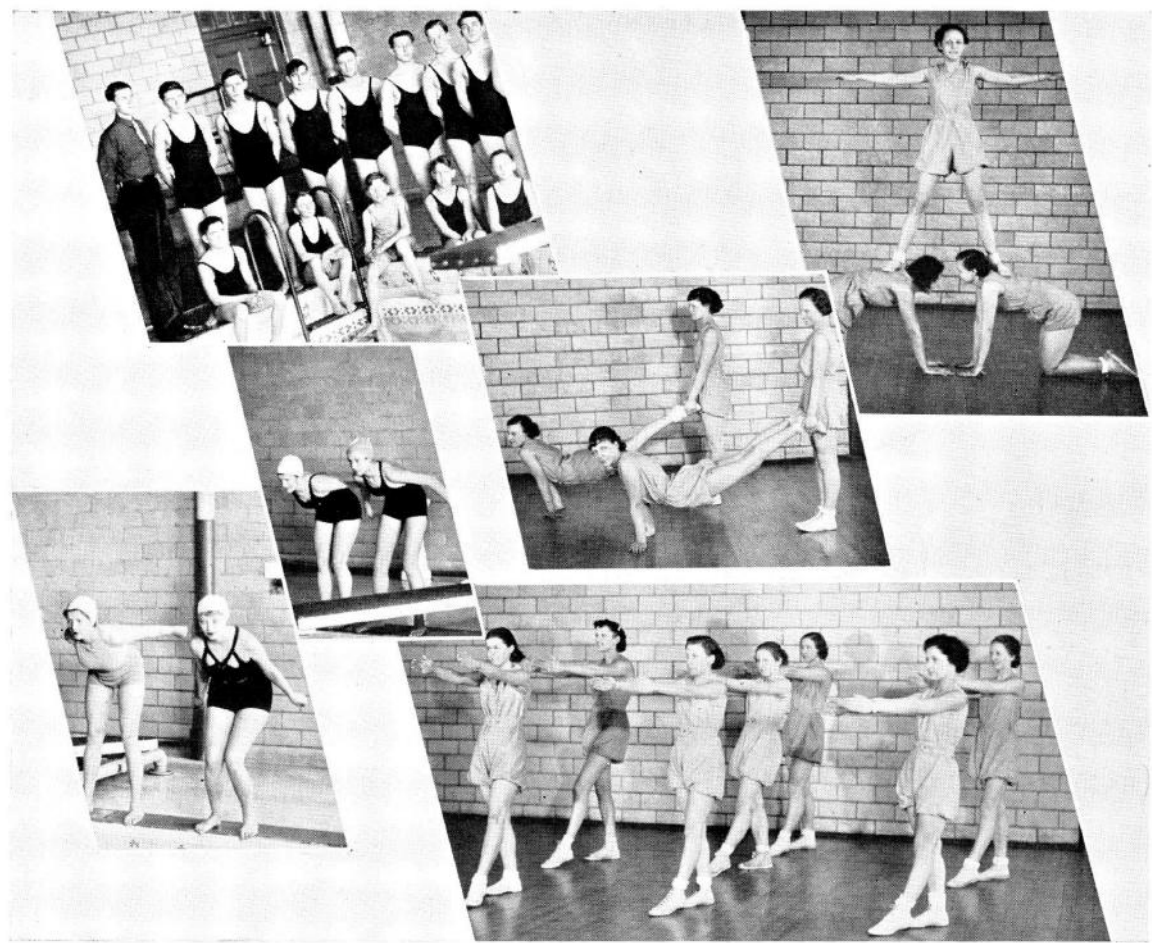


Isolated bits from the hourly activities in the school gymnasiums and pools may be collected to make up many pages illustrating the various means by which our physical education department endeavors to work out a program for everybody. The swimmers, solo and duet, are here shown practicing to develop the finer techniques of this activity. To the right witness the starting point of a relay race which is a popular event in the boys' gymnasium. The dancing girls depend on natural grace and carefully coordinated movements for the success of their work. There are no ruffles or furbelows here to camouflage a lack of grace and physical perfection.

The figure below shows group work which calls for consideration and cooperation to provide the nice balance that the pyramid demands.

For all-around development nothing is more successful than the calisthenics class like that shown in the lower right corner. Here every student can keep himself physically fit even though he has no particular flair for special activity.

EVERY STUDENT

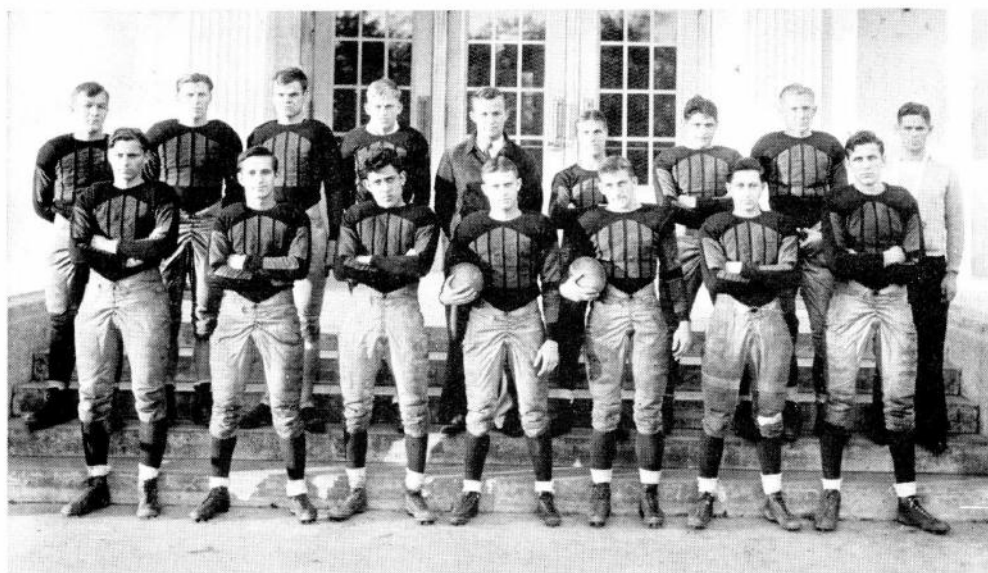


Lined up along the edge of the pool are a group of boy swimmers who participate in the swimming events both intramural and inter-school. The swimmers are all sizes and all ages but few sports call out more enthusiastic participants or more enthusiastic audiences. The events featured are: 40 yard, 100 yard, 220 yard free style swim, 100 yard breast stroke, 100 yard back stroke, 180 yard relay, medley relay and fancy diving.

Girl swimmers about to take off in an exciting race were caught by the camera man and two wheelbarrow racers are ready for the starting signal with their respective wheelbarrows eager to help make the race a success. Human barrows have some advantages over the wooden kind.

The girls go in for class drills and calisthenics in their gymnasiums too, as evidenced in the group at the lower right. The pyramid above is simple but effective.

FOOTBALL.



TOP ROW—M. Krall, G. Lynde, J. Reavis, A. Sajda, Coach Baer, J. Wilchouski, O. Penzato, A. Bodney, L. Spicer.
BOTTOM ROW—E. Alcich, C. Yaponzo, S. Patitsas, P. Eliabasich, E. Elleh, N. Poulos, W. Mazlack.

Under the blistering hot sun of August, our prospective team for 1935, blocked, tackled, and ran to develop into one of the best football machines that Lew Wallace ever had. Coach Baer had as a nucleus all but six of his last year lettermen and a group of promising prospects. The Hornets opened an eight game schedule by playing Hobart and defeating them 25-0. Next the Black and Gold triumphed successively over Washington of East Chicago, Roosevelt of East Chicago, and Emerson with no points scored against them. The Whiting "Jinx" came along and handed Wallace a 13-7 drubbing which was followed by defeats at the hands of Horace Mann and Clinton each by a score of 2-0. After these three defeats Wallace's team beat the Froebel team by a single field-goal. It was during this closing game of the season that one of Froebel's pluckiest players received a fatal injury.

Emil Alcich

FOOTBALL SCHEDULE

September 14	Hobart	0	Lew Wallace.....	25
September 19	Washington	0	Lew Wallace.....	7
September 26	Roosevelt	0	Lew Wallace.....	7
October 10	Emerson	0	Lew Wallace.....	20
October 18	Whiting	13	Lew Wallace.....	7
October 31	Horace Mann	2	Lew Wallace.....	0
November 8	Clinton	2	Lew Wallace.....	3
November 15	Froebel	0	Lew Wallace.....	3

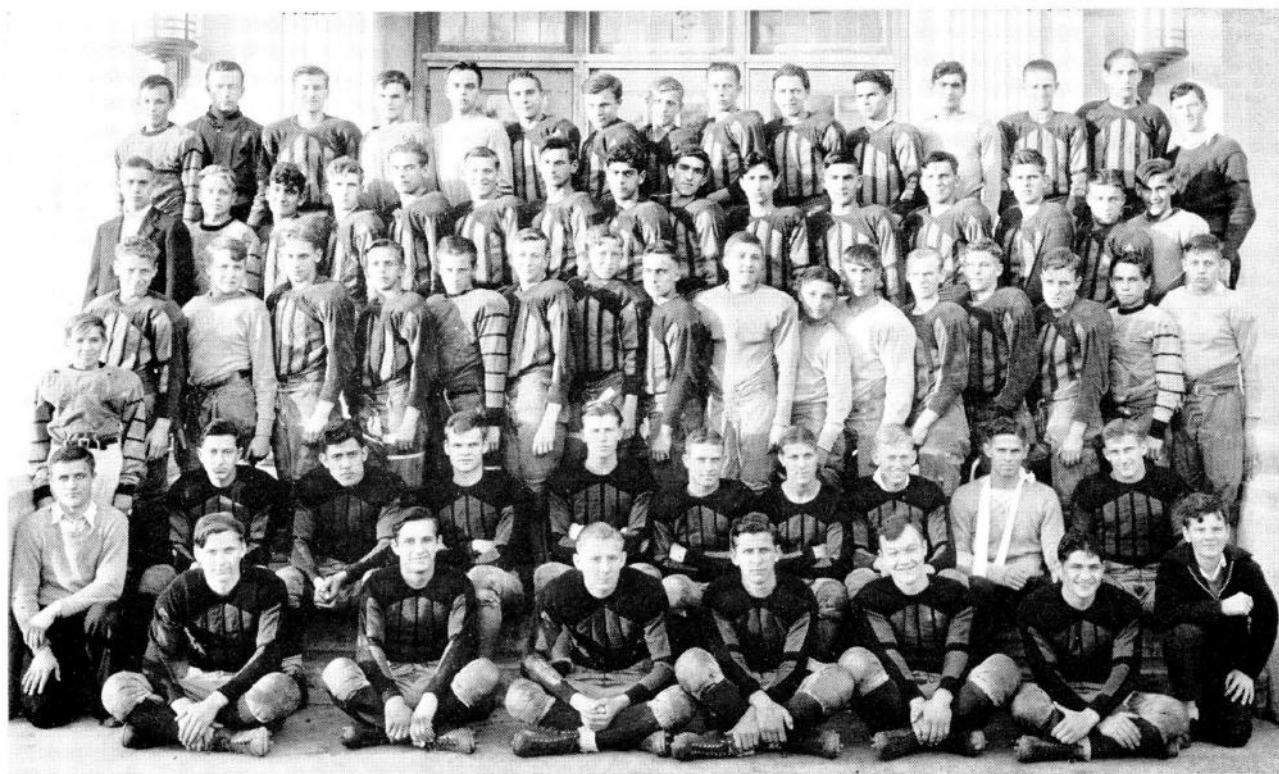
TOP ROW—M. Novotny, E. Garapich, E. Thomas, R. Miller, C. Thorsson, H. Hansen, C. Vrlich, E. Sohacki, J. Kern, S. Hunch, L. Kosanovich, V. Apolozan, H. Young, B. Phillips, B. Chadwich.

FOURTH ROW—P. Hill, T. Elliott, E. Svetanoff, H. Duggan, M. Jeffress, W. Kern, S. Ozimec, J. Apolzan, S. Yoko, M. Sut, N. Skorich, S. Valenti, J. Kuncaitis, N. Garapich, P. Modrowski.

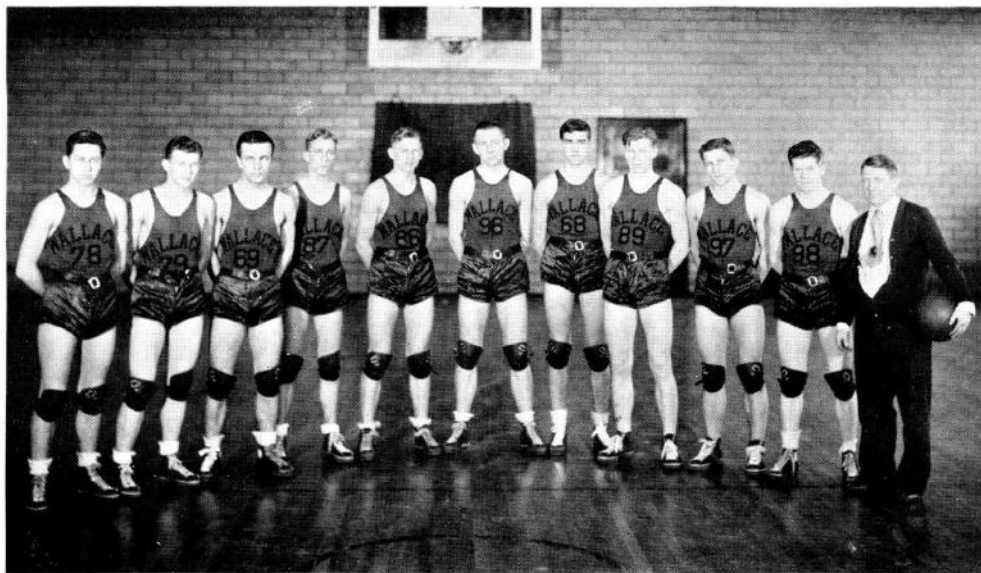
THIRD ROW—M. Tichac, J. Monroe, R. Hermes, J. Wilczynski, M. Shabowski, B. Helfrick, C. Hay, D. Haley, B. Blash, J. Sunny, J. Hocza, J. Quinn, E. Garriott, C. Danko, J. Lascaro, W. Garriott.

SECOND ROW—M. Fisher, N. Poulos, S. Patitsas, J. Reavis, G. Lynde, P. Elibasich, J. Wilchouski, A. Sajda, L. Spicer, E. Elch.

BOTTOM ROW—J. Uhler, E. Alcich, C. Ponzo, A. Bodney, W. Mazlack, M. Krall, O. Penzato, L. Quenett.



BASKETBALL • • • •



N. Poulos, W. Kurecka, E. Garapich, D. Nordahl, A. Sajda, A. Bodney, S. Yoko, G. Lynde, E. Elch, E. Bell, Coach Polk.

As soon as the football season is closed, all attention is focused on basketball. The gridiron fans move in and support the most popular of indoor winter sports.

The regulars and reserves, drilled in the fundamentals of the game promised a fairly successful season in 1935-36 but fortune decreed otherwise.

Game after game was lost, by narrow margins, to be sure, but we were beaten by Froebel, Hammond and Emerson and in the final games of the season the "Hornets" lost to the "Blue Devils" of Froebel and the "Brickies" of Hobart.

The holiday tournament held little in the way of victory for Lew Wallace. We defeated Roosevelt of East Chicago in a closely contested game by a score of 21-20 and were in turn defeated by Emerson scoring 26 points to our 21. This ended our hopes for a victory for another year.

The sectionals, this year, saw Lew Wallace reach the semi-finals. With apparent ease they took the game from Chesterton by a score of 42-20 and then defeated Portage, leaving Emerson the only obstacle between the Hornets and the "finals". Emerson proved too strong and we went down to defeat with a score of 33-20.

When the season closed next season's prospects were promising since so many players have received valuable training, leaving us with a well grounded feeling that we will have a prospective championship team next year.

Emil Alcich

BASKETBALL SCHEDULE

November 27	Hammond Tech	21	Lew Wallace.....	30
December 6	Horace Mann.....	27	Lew Wallace.....	21
December 12	Froebel	25	Lew Wallace.....	20
December 14	Riley	30	Lew Wallace.....	42
December 20	Whiting	14	Lew Wallace.....	24
January 3	Valparaiso	23	Lew Wallace.....	24
January 4	Wakarusa	17	Lew Wallace.....	49
January 10	Clark	31	Lew Wallace.....	33
January 11	Hammond	38	Lew Wallace.....	18
January 17	Emerson	27	Lew Wallace.....	24
January 24	Washington	22	Lew Wallace.....	34
January 25	Crown Point	48	Lew Wallace.....	33
January 31	Roosevelt	27	Lew Wallace.....	19
February 1	Horace Mann	18	Lew Wallace.....	24
February 7	Froebel	26	Lew Wallace.....	23
February 11	Emerson	43	Lew Wallace.....	18
February 14	Whiting	26	Lew Wallace.....	30
February 28	Hobart	29	Lew Wallace.....	26
SECTIONAL				
March 6	Chesterton	20	Lew Wallace.....	42
March 6	Portage	16	Lew Wallace.....	45
March 7	Emerson	33	Lew Wallace.....	30

TOP ROW—C. Wilzenski, H. Hansen, S. Czkela, W. Garriott, R. Gabriel, J. Ladra.

THIRD ROW—F. McColly, G. Gaza, J. Gelnick, F. Stanislaw, B. Collins, W. Hixon, J. Syzmanski.

SECOND ROW—W. Kendall, Assistant Manager; A. Carrol, N. Garapich, G. Lynde, A. Sajda, A. Bodney, S. Yoko, C. Fisher, C. Ponzo.

BOTTOM ROW—N. Kosanovich, Senior Manager; N. Pou'as, W. Kurecka, E. Garapich, D. Nordahl, E. Elch, E. Bell, Coach Polk.



TRACK



TOP ROW—R. Schultz, E. Leonard, J. Bires, P. Adams, S. Hunch, D. Langley, J. Meszaros, H. Sykes, L. Muth.
 FOURTH ROW—R. G. Phillips, F. Broker, C. Novotney, W. Kurecka, M. Stephens, T. Moore, S. Czekala, J. Kern, H. Quenett.
 THIRD ROW—E. Svetanoff, J. Cutro, B. Guzowski, W. Bahun, W. Stazinski, C. Petroff, S. Illes, J. McAllister, E. Jansen, J. Valenti, Coach Hatrak.
 SECOND ROW—J. Watkins, G. Langel, D. Huston, A. Padish, R. Smith, T. Degan, G. Huston, E. Garriott, E. Fitzgerald, H. Vorwald, Manager.
 BOTTOM ROW—H. Helbing, H. Duggan, M. Fisher, J. Miller, B. Collette.

Track season got off to a late start. The first meet, The Central Inter-collegiate Relays at Notre Dame, was not held until March 14. The Gary Indoor meet was held in the Chicago Field House, March 19.

On April 4 the team again journeyed to South Bend for the Gary Invitational Indoor Track Meet. A week later Lew Wallace was host to Emerson in a dual meet. On April 18 we participated in the Gary Relays which took the place of the annual Hammond Relays sponsored by the Hammond High School. The following Saturday, April 25, the Lew Wallace team entered the Kokomo Relays at Kokomo, Indiana. The City Outdoor Meet was held the following Tuesday at the Horace Mann field.

The Northern Indiana High School Association Conference Meet was held May 2. It was the second conference in which Lew Wallace has ever participated. The Sectional Track Meet was held May 9. The first and second place winners of this meet competed in the State Track Meet the following Saturday, May 16.

A few weeks later a banquet was given for the members of the squad and Lew Wallace letters were presented to the boys who had earned them.

Charles Novotny

INTRAMURAL ACTIVITIES

Boys' intramural activities are carried on for the most part as a unit of the daily physical education program. The two important intramural activities of the school year are the Holiday Class Basketball Tournament held during the Christmas recess and the Class Track Meet of the spring season. This year sixteen teams from the various high school classes and sixteen teams from the grade school were entered in the tournament and competed for their respective basketball championships.

The senior "Thunder Pumpers" under Captain Tichac defeated the Senior Quintuplets led by Captain Skorich for the championship of their high school division and the "Basket Ticklers" under the direction of Captain Peters won the grade school tournament. More than two hundred students competed in this two-day activity.

The inter class track meet is held early in the outdoor track season and boys from the various classes compete in all of the field and track events. Last year the championship of the tournament was held by the class of 1935 who scored a total of 82½ points; the class of '37 took 62 points; '36, 42 points, and '38, 18 points. Sixty-five boys competed in the meet and from this group many of the members of the present varsity track were selected.

Of the material developed in the tournament championship of class '35 Robert Shurilla, Rudolph Yovonovitz, and William McCown were outstanding. Shurilla won the broad jump, low hurdles, and 100 yard dash; McCown won the 220 yard dash, the 440 yard dash and was a member of the winning 88 yard relay team, and Rudolph Yovonovitz who tied for second place in the high jump was also a member of the winning relay team in the state meet.

The members of the two finalist teams in the high school basketball tourney were:

Senior Thunder Pumpers

George Tichac, Captain
Lloyd Spicer
Nick Kasonovich
Gus Chupas
Steve Ozimec
Peter Orlich

Senior Quintuplets

Nick Skorich, Captain
John Apolzon
Carlo Markovich
Allan Borch
Maurice Jeffress
Robert Hermes

During the regular daily physical education hour for which every boy is scheduled unless he is certified as physically unfit by a physician, students compete for leadership in the following sports: rugby, kitten-ball, volley ball, hand ball, swimming, water polo, and track. In addition tumbling, golf, tennis, and field events may be taken by the student in the after school activity program.

The physical education department carries out this varied program because it believes thoroughly in competitive games and individual contests as a means of developing to the fullest extent the student's whole hearted interest in his physical well-being and of bringing out, not only leadership, courage, cooperation, and fair play in the individual but also that most essential requirement of success in all walks of life—the spirit to win as individuals or as groups.

GIRLS' ATHLETIC ASSOCIATION

"Promote sportsmanship among girls who are interested in athletics" is the slogan of the Girls' Athletic Association under the direction of Isabella Brown. To interest all girls in athletics as an extra-curricular activity is the objective of its members. No organization in the school numbers more enthusiasm or has a greater influence on the social and athletic lives of the girls.

Their program provides for winning activity points: playing on any team 100 points, those selected for the varsity team receive an additional 25 points and each girl who "hikes" forty miles receives 50 points. Series of tests are given at stated intervals and each girl is awarded 100 points when she has succeeded in passing any series satisfactorily. The tests cover a wide range of activities and the girls may elect to take tests in many different fields. The accumulation of 500 points entitles a girl to wear the G. A. A. emblem in the form of a pin and earning 1,000 points gives a girl the privilege of wearing the sweater.

So many girls have come out for the various sports this year that it has been necessary to have duplicate teams for each class in the intra-mural competitions; the winners engaged in inter-school contests. Each year shows a marked increase in membership, the number of emblems issued, and the popularity of their social events. The organization is self-supporting and keeps its treasury adequate through candy, pop-corn or taffy-apples sales. The Christmas and Valentine dances this year sponsored by the Girls' Athletic Association brought students and alumnae members together for most successful social contacts.

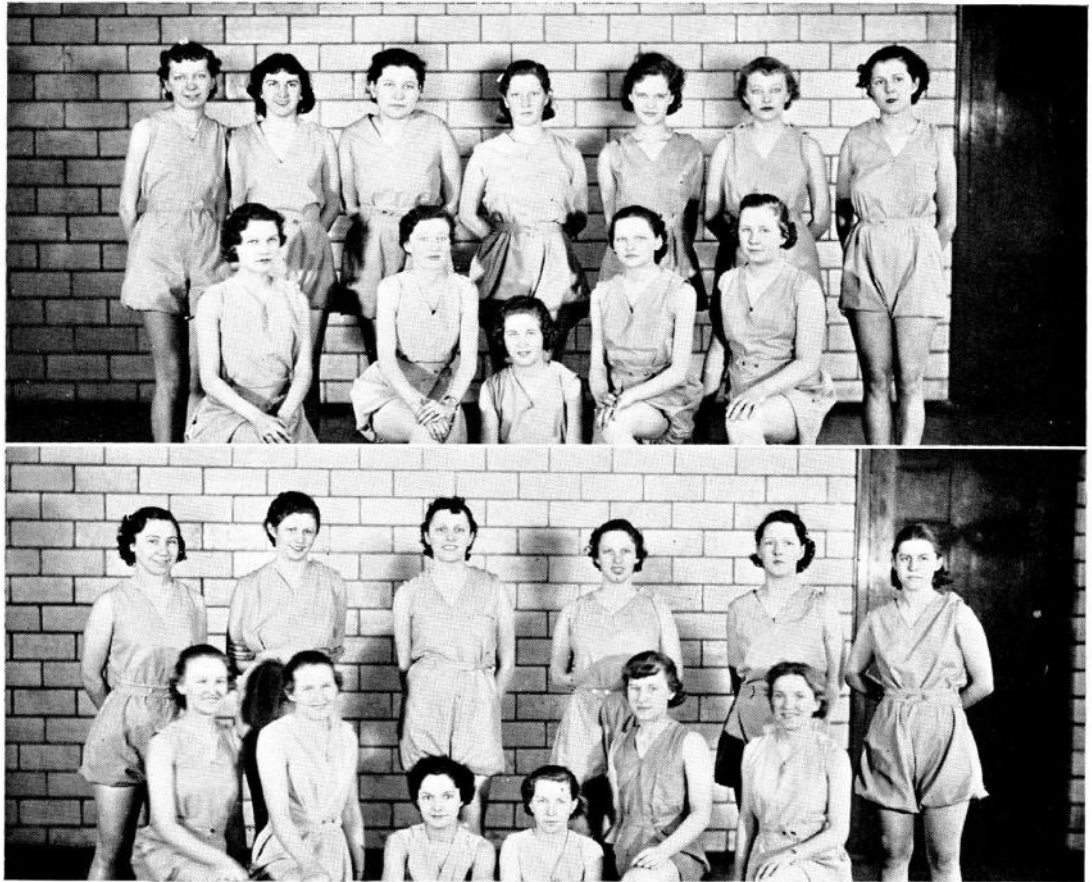
TOP ROW—S. Lukasiak, N. Burchinal, L. Groza, G. Kass, M. Kepshire, E. Nuzzo, E. Kjelstrom, J. King, M. Stefanchik, Miss Brown, M. Kinder, J. Lewandowski, E. Fauver, M. Sharpe, N. Quenett, M. Brek, E. Kelley, L. Collette, D. Sharpe.

THIRD ROW—L. Weber, C. Mazlack, M. Lawson, D. Spahr, J. Gaza, M. Solay, S. Chab-
raja, E. Tomlonovich, P. Rongers, A. Tomlonovich, R. Rudman, E. Henderson, D.
Donahue, R. Costoff, A. Lucas, E. Hill, E. Parry, R. Heal, J. Fox, E. Sowards.

SECOND ROW—H. St. Paul, M. Basta, D. Basta, A. Fox, F. Elot, I. Lewandowski, E.
Smith, M. Rigich, S. Elibasich, W. Hansen, L. Quinn, L. Pest, F. Kalamir, G. Sunny,
E. Baricevich, D. Matthies, D. Knight, M. Stefansky, H. Solay.

BOTTOM ROW—M. Saroff, C. Hlodnicki, H. Schuller, D. Danko, R. Rochford, G.
O'Bradovic, E. Smith, B. Doty, M. Tichac, I. Anderson, S. Hlodnicki, E. Szymanski,
J. McAllister, A. Shafchuk, M. Visclosky, T. Markovich, M. Knaizl, O. Doshan, M.
Macpherson.





CAPTAINBALL

TOP ROW—L. Weber, H. Davis, A. Tomlonovich, E. Fauver, I. Rongers, A. Dennison, R. Costoff.

BOTTOM ROW—G. Sunny, B. Doty, F. Evans, M. Visclosky, W. Hansen.

BASKETBALL

TOP ROW—G. Kass, J. Gaza, S. Chabraja, E. Perry, N. Quenett, G. Karpen.

BOTTOM ROW—D. Matthies, M. Stefansky, G. O'Bradovic, A. Fox, L. Pest, F. Kalamir.

Pictured above are the varsity teams of captainball and basketball but the girls also have volleyball, handball, and hockey teams.

The varsity team in each sport is selected from outstanding players on class teams who in turn have earned a place on that team through competitive try-outs after school hours. Being chosen on the basis of ability, each girl must be present at six practice games before her place on the team is assured.

RESERVE OFFICERS TRAINING CORPS

The mission of the R. O. T. C. is to awaken in the student an appreciation of the obligations of citizenship, to prepare him to discharge his duties as a citizen, and to qualify him as a military leader.

There are those who have the idea that military training is nothing more or less than a training school for soldiers. While R. O. T. C. is established essentially for military training, the idea of continuing and promoting this system is not to make soldiers but men—men who will be prepared to take their rightful places in the business and professional world because they have learned those principles which are essential to success in any field.

The drill, although a secondary part of military training, is very important because it forces all of the cadets to take exercise in a most healthful form. It not only promotes physical strength and development, but it encourages the cadet to strive to excell. For in military service merit alone wins.

The cadet officers have a valuable experience in cultivating discretion, tact, and judgment while commanding others. Training in the directing, command, and controlling of men is of incalculable value to a boy in this age of great enterprises when the ability to command is the key to success. It is the best system of training to develop executive ability.

One of the greatest benefits a boy derives from drill is the art of co-operating with his fellowmen. Not only should a boy be capable of commanding, but he should also be able to work along the lines of understanding and team-work, which is one of the fundamental principles upon which modern business is based.

Military training induces pride in dress as well as in personal conduct, it teaches the importance of self-reliance in order that responsibility may be met with credit and success; it assists nature in physical development, and brings with it manliness of figure and carriage; it frowns on anything that is low, dishonorable and unmanly.

We believe that military training, far from interfering with other forms of student training serves rather to inculcate those traits which are necessary to the foundation of a well-rounded, well-educated man.

The R. O. T. C. was organized at Lew Wallace in September, 1933. Since then our companies have taken their place in the Gary unit by contributing well-drilled cadets, officers of high rank, and individual medal winners.

Each year the local Optimist Club has presented a medal to the most outstanding first-year cadet in the city. The first medal was won by Emil Alcich and each succeeding year a Lew Wallace cadet has earned that coveted mark of distinction.

This year Emil Alcich as Colonel, highest ranking officer in the Gary unit, was privileged to lead the grand march at the annual social event of this organization, the Military Ball, held on April eighteenth. On this occasion all of the members of the cadet units invite their friends to an evening of dance and music.

COMPANY C

TOP ROW—D. Langley, W. Reichardt, W. Gill, R. Pelke, B. Guzowski, J. Gourlay, M. Bowser, G. Hoekstra, R. Locke, J. Tomasic, J. Kaley, F. Glidewell.

THIRD ROW—R. Lanham, T. Vargo, R. Specht, A. Carroll, G. Berleen, T. Collins, H. Keitzman, J. Loucks, D. Shafer, F. Broker, R. Hegji.

SECOND ROW—J. Crocus, J. Watkins, J. Dykhus, A. Morgan, D. Metz, D. Gould, N. Hood, R. Miller, A. Twombly, J. Cutro, C. Davis, L. Mroz.

BOTTOM ROW—Anne McIsaac, D. Stimson, E. Aleich, E. Christoph, G. Churilla, L. Serwise.

COMPANY D

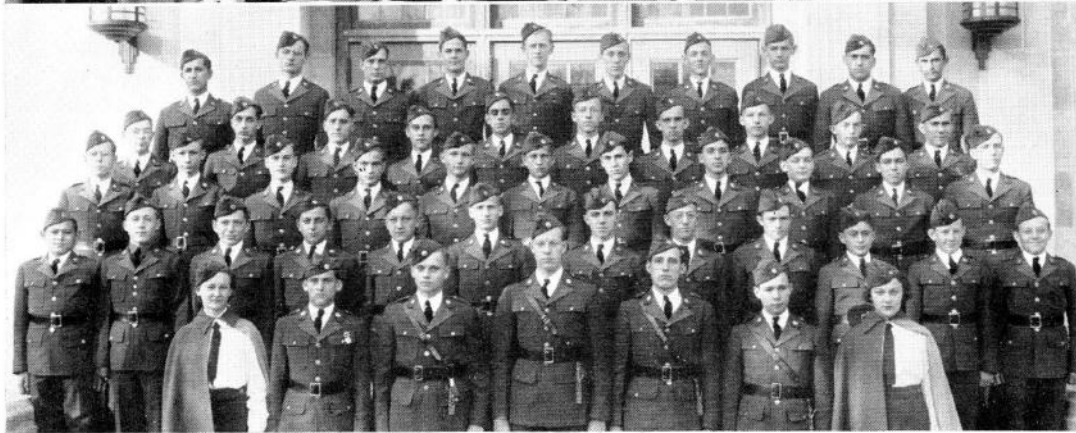
TOP ROW—A. Mandich, B. Zabinski, J. Huse, R. Pruitt, R. Amstein, R. Troupe, D. McKnight, W. Zabinski, J. Hayes, J. Petro.

FOURTH ROW—W. Laster, W. Shurilla, J. Starkovich, J. Utefka, C. Anderson, S. Chicos, R. Gould, V. Krejci, H. Sunderman, J. Vukin.

THIRD ROW—R. Raub, C. Brooker, D. Jenkins, L. Mathews, P. Kish, T. Harabota, J. Ornelas, E. Cook, J. Churchill, J. Haller, E. Stout.

SECOND ROW—N. Maryonovich, R. Troupe, J. Briggs, P. Sgouros, E. Hereka, W. Beasey, R. Ashley, M. Watkins, P. Cokusis, P. Adler, I. Hannaway, C. Schoonover.

BOTTOM ROW—Dorothy Matthies, E. Patch, J. Weber, F. Plummer, C. Raub, D. Irwin, Louise Quinn.





FRESHMAN!

Pull in your tongue and sign your name.

SOPHOMORE!

We recognize your importance ; so please sign here.





JUNIOR!

Don't tell me you're in too much of a hurry to sign this.

SENIOR!

No, this won't cost a cent; just sign your name here.



Photography
STERLING STUDIOS

Engraving
INDIANAPOLIS ENGRAVING COMPANY

Printing
THE BENTON REVIEW SHOP

Covers
DAVID J. MOLLOY