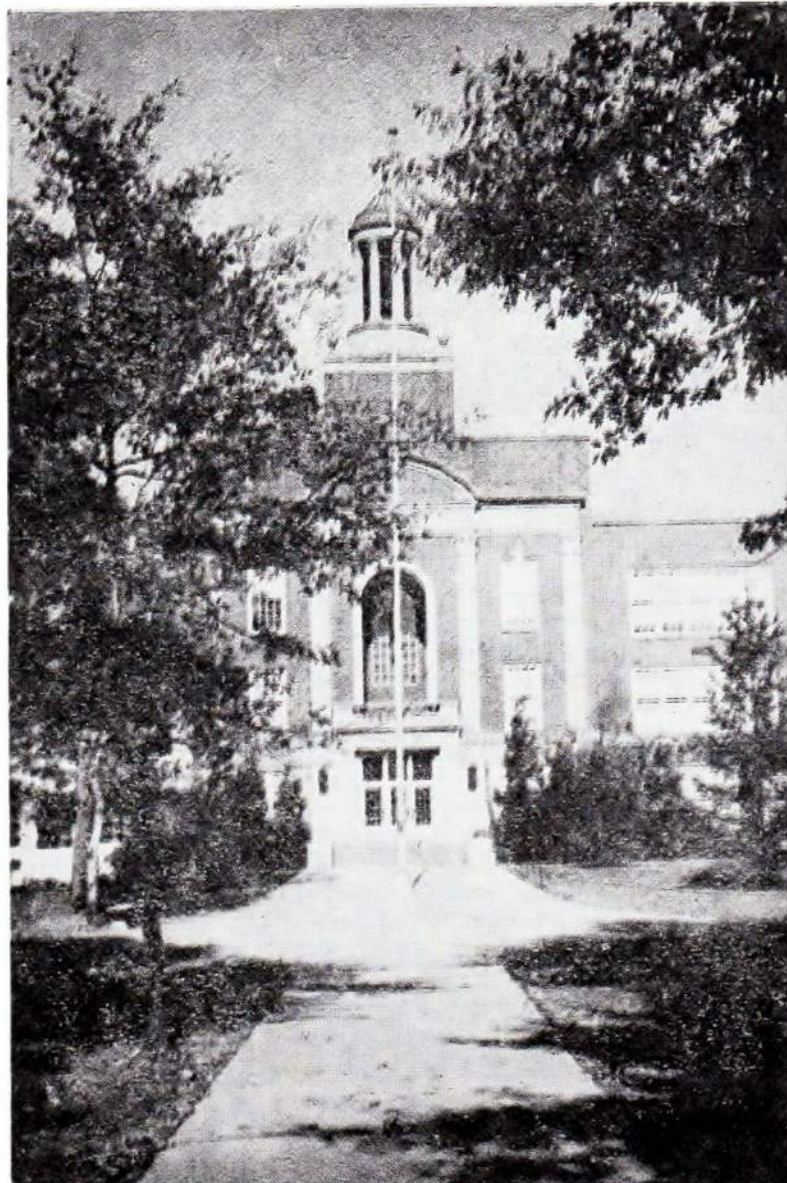


Information For Class of 1972
Lew Wallace High School



We Welcome You —
to
Lew Wallace High School

Our Principals:

Mr. Wm. J. Vorwald, Principal

Mr. A. E. Smith, Ass't. Principal

Mr. Jos. Black, Ass't. Principal

Our Nickname:

Hornets

Our Colors:

Primrose & Black

SCHOOL HISTORY

In 1926, the 45th Avenue Grade School was officially named Lew Wallace in honor of the Hoosier-born author, soldier, lawyer and statesman, General Lew Wallace.

The first edifice, the east building, was built on a 25 acre tract, which cost approximately \$25,000. In 1933, the west and main buildings were constructed. The latest addition, started in February of 1952, was opened for classes the following September.

When the school was founded, a few wooden portables enrolled 502 students with a faculty of ten teachers. Today, the million dollar structures accommodate 2,200 senior high school students and over 100 faculty members. Within the next few years additional facilities will be completed to meet the needs of an increasing student population and an expanding curriculum.

The facade of the completed Lew Wallace High School will face north, Forty-fifth Avenue, and all the buildings will then be connected into one.

SCHOOL DATA

Lew Wallace High School is a member of the North Central Association of Colleges and Secondary Schools and its' curriculum is directed toward the fundamental goal of developing the mental, physical, and personal characteristics of the individual to the highest possible level of achievement.

School enrollment: Approximately 2,200

Faculty: More than 100 members representing colleges and universities from coast to coast.

Parent-Teacher Association: The Lew Wallace High School Parent-Teacher Association is affiliated with both the State and the National Associations and is a member of the local P.T.A. Council.

All parents of children in Lew Wallace High School are invited to join and participate.

TRADITIONS AT LEW WALLACE HIGH SCHOOL

THE BUGLE CALL, "To the Colors," is sounded each morning at the opening of school. Following the bugle call, students face the classroom flag and repeat the Pledge of Allegiance with their teacher.

HOMECOMING, one of the most anticipated events of the fall season, begins with the traditional pep rally, where cheerleaders and speakers reflect the high spirit of the student body for the homecoming weekend.

Candidates for Homecoming Queen are nominated by members of the senior class. Each student, who purchases a football ticket, has the opportunity to vote for a favorite candidate. During the halftime program the queen candidates are escorted to the field and the Homecoming Queen is selected.

Following the football game, a festive atmosphere prevails at the annual Homecoming Dance. Here the queen and her court reign for the evening.

SCHOOL SONGS play an important part in the tradition of any school. The words of our first song, "Hail, Lew Wallace" were written by Rebecca Kapp in the year 1928 when she was a freshman in our school. The melody is that of an old march. Eight years later, 1936, the Lew Wallace Loyalty song was written. This music was composed by one of our music teachers, Miss Helen Egger, and the words represent the combined efforts of the students enrolled in auditorium that year. Words to the pep song and the loyalty song are found on the back page of this booklet.

FRESHMAN WEEK is planned at the beginning of each new school year to help new students become acquainted with the many aspects of high school life. Sponsored by Girls' Club, this program has been an annual event since 1939.

CHRISTMAS VESPERS Every year the speech and choral departments work together to present Christmas Vespers, a traditional religious performance. The story of Christ is told through song and scripture. All choral groups participate, and narrators are chosen by tryout from the speech and drama classes.

INAUGURAL BALL The highlight of the winter holiday season is the Inaugural Ball, which occurs the first Friday of the Christmas vacation. The school gym is elaborately decorated to carry out the theme of this semi-formal couple dance. The Inaugural Ball is a tradition since the founding of the school. It is sponsored by the Student Council in honor of the new Council members and the new officers of the various clubs.

COLLEGE DAY is usually scheduled in the fall. At this time, representatives from various colleges and universities are available to help students plan their future and to answer any questions concerning college requirements. College-bound students and their parents are encouraged to talk to the representatives. A list of colleges is posted and appointments are made through guidance counselors.

VOCATIONAL AND TECHNICAL SCHOOL DAYS During the school year representatives from vocational and technical schools come to the school to meet with students and parents. These representatives provide information to students who desire additional training beyond high school but who do not desire to enter a college or university. Interested students from all grade levels are invited to participate in the conferences and meetings.

ACTIVITY DAY was established in 1937 as a day for bestowing well earned recognition on students outstanding in high school work. Activity Day is usually held in May and is conducted by the Student Council.

To inspire the freshmen, several awards may be earned by outstanding leaders of that class. Freshman awards may be earned in English, history, mathematics, Latin, Spanish, biology, music, dramatics, art, scholarship, citizenship, and athletics.

DRESS CODE To dress right is to look and feel right. We will wear clothing that is clean, neat and properly fitted.

The Lew Wallace High School Student Council strongly discourages and disapproves of students wearing the following types of apparel:

Inappropriate for Boys: Levis; T shirts and sweat shirts; Hobnail boots or horseshoe cleats; High-top gym shoes; Extreme hair cuts; Out-of-school club sweaters, jackets, or insignia; Shirts open below the top button.

Inappropriate for Girls: Clips and pin curls; Extremely short or tight skirts or dresses; Heavy make-up; Extreme hair styles; Inappropriate blouses; Slacks, Levis, Bermuda shorts, jeans.

PROCEDURES FOR STUDENTS
of
LEW WALLACE HIGH SCHOOL

NORMAL SCHOOL DAY. The normal school day begins at 8:00 A.M. Students may enter the building at 7:45 A.M. when the first bell rings. The school day ends at 3:00 P.M.

ATTENDANCE. The following are valid excuses for absence from school: Illness of the pupil; Death in the immediate family; Exclusion by direction of the school nurse or a physician because of quarantine, contagious disease, or other cause; Religious holidays.

ADMISSION TO CLASSES AFTER AN ABSENCE If a student has been absent for one, two, or three days, he must present the written excuse signed by the parent and stating the reason for absence to the homeroom teacher. He will be issued an "Absence Admission Blank" form which must be signed by every class teacher on his schedule. After all signatures have been obtained, this form is returned by the student to the homeroom teacher. Parents must call when a student is absent and if no call is received for afternoon absence, student is unexcused. If a student has been absent for one-half day or any number of half and whole days, $\frac{1}{2}$, $1\frac{1}{2}$, $2\frac{1}{2}$, etc., he must present the written excuse from the parent to the attendance secretary in the school office for admission to classes.

If a student has been absent for more than three consecutive days, he must report to the school nurse in the health clinic before coming to the office for an admit form.

If a student has been absent without a valid excuse, he will receive a blue slip which indicates that all work that has been missed cannot be made up. Such absence prevents maximum student achievement and must be avoided.

TARDINESS A student who arrives late to school must report to the attendance office to be admitted to classes. Whenever tardiness can be anticipated by the parent, a note explaining the reason is helpful.

LEAVING THE BUILDING If for any reason it is necessary for a student to leave the school during the regular school day, permission must be obtained from office personnel. The parent will always be notified first for reasons of safety and security. Before leaving the building the student must sign a register located in the attendance office where essential information is recorded.

DRIVING TO SCHOOL/ ACCEPTING RIDES TO SCHOOL According to the School City of Gary Driving Policy no student is permitted to drive a car to school unless he has received a driving permit. Permits are issued by the Assistant Principal only when a definite need exists.

Students are not permitted to ride to school with other students unless they are members of the family with the consent of the parent, and the student driver has a school driving permit.

Students are not permitted to ride in cars during the noon hour under any conditions.

Violations of this School City Policy can result in suspension from school. The only intent of this policy is the safety and security of students attending the public schools.

LOCKERS Students may acquire lockers in the Assistant Principal's office. A letter will be mailed to each student before the start of the new school year telling when lockers are to be assigned. A 50¢ deposit is required from both students if a locker is to be shared. A \$1.00 deposit is required by a student for a single locker. At the end of the year, half of the deposit is returned. If a lock is lost, a new one may be acquired from the Assistant Principal's office, and the student will be required to pay for the lost lock.

GUIDANCE DEPARTMENT

New students entering Lew Wallace High School will find in their counselor a friend who has time to sit down and talk with them about their work, activities, hopes, disappointments, and plans for the future. These counselors, who are experienced in working with students both in and outside the classroom, are available to help them use the high school years in the best way possible. Counselors have at their fingertips a vast amount of information needed by students as they search for answers to questions on planning future careers, knowing their own abilities, and getting along well in school work.

Students may request conferences with their counselor at any time during the school year. Such conferences are especially helpful when students experience difficulties of all kinds. However, students should have routine conferences to get help in analyzing their school work and various test scores.

It should be the goal of each student to have a definite plan for what he or she will do after graduation. Counselors can aid students to tailor their own high school education to give them the best preparation possible for their own particular plans. Get acquainted early with your counselor and let that person help you map out your own plan for your future.

You will be notified in the fall who your counselor is. Usually that person will continue to be your counselor until you graduate. However, all the Lew Wallace counselors are available to you. To see a counselor, simply let that person know, and a conference will be arranged during your study hall hour.

Today, Lew Wallace graduates can be found in many parts of the world engaged in many different careers. It is the function of the Lew Wallace Guidance Department to help you use the high school years to plan your own successful career.

IMPROVING YOUR STUDY HABITS

Do you want to improve your study habits? It's all up to you. What can you do to improve your study habits? Here are some suggestions that will help you.

1. Find a place to study by yourself if you can possibly do it. A straight but comfortable chair with a table or desk is best. Adjust the light over your left shoulder. Be sure there are no glaring areas of brightness contrasted with spots of darkness, for that tires your eyes. Sit in a comfortable position with good posture.
2. Take away all the distractions that you can. Radio music, an inviting pile of comic books, the television, and a telephone that is too handy--these are distractions. They get you into the habit of dawdling and daydreaming. Rule them out with a firm hand. Make yourself stick to the subject. Be businesslike.
3. Have your assignments written down clearly so that you don't have to spend time finding out what to do. You may want to keep an assignment sheet with the assignment for each class and the date each assignment is due. Some students buy a small five-cent notebook for this purpose. When the assignment is completed, they check off in the notebook. You can save much time, and you can avoid making a number of telephone calls during study time at home, if you know the assignment.
4. Have all of your study tools at hand. It is distracting if you have to leave your work to hunt for a pencil. Paper, books, pen, drawing materials, maps, a dictionary, eraser, bottle of ink--all should be handy so that you do not have to interrupt yourself to get your tools.
5. Set a limit on the amount of time you are going to spend on a single subject. Have a clock or watch at hand. For each subject, estimate the amount of time needed to complete your assignment, and then work to keep within that time limit. Try to get your work done quickly. Setting a deadline for yourself is a very good way to help you rule out distractions. It will make your study period more interesting, too.

6. Have a regular time for doing your studies. If you study in the evening after supper or in the morning before school, be sure to stick to your schedule and try to avoid interruptions. Your family will help you to keep your schedule if they are in on the original planning. It is much easier to work if you know that you have already set aside some time for it.

7. Plan the order of studying your subjects. These suggestions may help:
 - a. Do memorizing of any kind early in the period. Review it again before the close of the study time.
 - b. Do hard subjects first. Don't stay on them too long. Watch your time schedule.
 - c. Save reading until the latter part of the period unless the reading is very difficult for you.
 - d. Arrange your subjects so that you get variety, and so that you don't get "stale" from doing all the same type of work at the same time. For example, if you have two assignments involving writing, do a reading assignment in between.
 - e. Do easy jobs last, like cutting and pasting clippings, or coloring maps. Then you will have the hard work out of the way and the rest will be easy.

HOW PARENTS CAN HELP

1. Require books to be brought home every night.
2. Have your child keep a small assignment notebook.
3. Provide a definite time for study; set up a schedule.
4. Provide a place conducive to study; quiet, sufficient light, table or desk and a chair.
5. Supervise his studying.
6. Check over your child's homework with him.
7. Review areas of the subject where your child has difficulty.
8. Provide special tutoring by a fellow student or a tutoring service.
9. Maintain active interest in your child's school work.
10. Encourage academic excellence.
11. Serve an adequate breakfast every day.
12. Require sufficient rest each night to prevent fatigue the next day.
13. Place limitations on T.V. and other school and community activities.
14. Limit work after school or in the evening.
15. Praise those areas where your child is performing or improving.
16. Contact the school and make appointments with teachers, counselors, or principals whenever it seems desirable for the welfare of your child.

REPORTS TO PARENTS

Parents may expect through the U. S. Mail, a report slip of their child's progress two times each semester. Examine it carefully. Commend your child when the report shows satisfactory growth, help your child find causes for unsatisfactory growth and help him make plans for improvements.

CLUBS OPEN TO FRESHMEN

NAME	WHO IS ELIGIBLE	WHAT THEY DO
ASTRONOMY CLUB	Any Student	Learn about astronomy
AUDITORIUM COUNCIL	Any Student who applies and is approved by Council	House Committee at functions involving Lew Wallace - ushering, selling tickets, etc.
AUXILIA	Any Student	Service to school through library work
BIOLOGY CLUB	Present Biology students or those who have had Biology	Field trips, projects, lectures, pictures, one sale, one picnic, social period after some meetings.
BOOSTER CLUB	Any Student	Boost school activities, athletics, etc.
BOYS' CLUB	Any Boy	Emphasize school spirit through various social and interesting activities.
CHESS CLUB	Any Student	Play chess. Chess taught to non-players. Team plays other schools.
FUTURE TEACHERS OF AMERICA (FTA)	Any Student with an average above "C"	Assist teachers, promote Teaching Career Month, decorate windows during Education Week.
GIRLS' CLUB	Any Girl	Teas, sings, potlucks, general service to school.
GIRLS' CLUB COUNCIL	Each homeroom elects a representative and alternate	Plan Girls' Club activities
"LES PARISENS"	Second year French students	French language films, sings, potlucks, speakers.
OLYMPIANS	Second year Latin students	City-wide Latin Conference, picnic, tea, guest speakers.
PICA CLUB	Anyone interested in printing	Field trips to printing plants, social affairs, guest speakers, printing service to school.
ROCKET CLUB	Anyone interested in building and shooting rockets	Building and shooting rockets.

CLUBS OPEN TO FRESHMEN

(Continued)

NAME	WHO IS ELIGIBLE	WHAT THEY DO
SPANISH CLUB	Second Year Spanish students	Dance, sing, field trips, party, dinner, Spanish movies
CANDY STRIPERS	Any girl 16 years or older, good scholastic average, dependable, cheerful.	Hospital volunteer service Mercy & Methodist Hospitals
INKPOTS	Girls in 10th, 11th, 12th grade.	Write short stories, etc.
CLUB "W"	Major letter winners	Sponsor athletics and school spirit.
SENIOR HONOR SOCIETY	"B" average juniors & seniors elected by faculty. (Based on leadership, character, service.)	Promote scholarship
STUDENT COUNCIL	Elected representatives of student body, all club and class presidents	Co-ordinate functions of all school organizations and activities.
THESPIANS	Any student who meets requirements of National Thespian Organization	Honorary
GERMAN CLUB	Second, third, fourth year German students.	Various activities of interest to German students.

OTHER ACTIVITIES CONNECTED WITH ENROLLMENT IN CERTAIN SUBJECTS:

Band, Orchestra, Journalism, Yearbook, Photography,
Radio Broadcasting, R.O.T.C. Rifle Club and Drill Team,
Dramatics.

PHYSICAL EDUCATION DEPARTMENT

PHYSICAL FITNESS is a basic objective of physical education. Through the use of sports, team and individual, exercises and other activity appropriate for high school students, the Lew Wallace staff provides means for each student enrolled in a regular physical education class to achieve his own level of physical fitness.

RESTRICTED PHYSICAL EDUCATION DUE TO HEALTH REASONS At this time, there is no provision made for a limited or restricted type of physical education class. Such students who must be excused from the regular class must have on file an appraisal form signed by the family physician. The school form, Student Physical Activity Status for the Department of Health and Physical Education, must be filed in duplicate with the school nurse. This student is then assigned to another academic class or to a study hall. It is advisable that this be done prior to the opening of the academic school year.

SWIMMING Each student is given an opportunity to learn to swim or to improve the skills he or she already has. Each student is required to participate regularly in order to achieve success. Each beginning student learns to swim the crawl stroke efficiently, and to perform a simple dive. The more advanced swimmer learns the more advanced strokes and dives, as well as to swim for endurance. This life-time sport receives much emphasis and is an important part of the physical education program.

For those boys interested in more expert achievement, the after-school swimming classes are provided.

REGULAR PHYSICAL EDUCATION CLASSES REQUIRE REGULATION UNIFORM:

GIRLS: 1 light blue gym uniform (the one piece is now standard for all Gary Public Schools)
1 pair low tennis shoes (white)
1 pair white sox
1 swimming cap (any color)

Each part of the complete uniform must be identified with the student's name in full. (Ink or name tape)

FEES: \$1.00 per school year for rental of bathing suit
\$1.00 for rental of school lock on gym clothes basket

BOYS: Shorts and shirts are available for a fee of \$2.75, payable to the Bookkeeper in the east wing of the Principal's office, at the time book rental and locker fees are paid.

Each boy must furnish his own rubber-soled gym shoes. Towels and soap are furnished for showers after each activity. Each student is given an assigned basket with a lock.

PHYSICAL FITNESS TESTS are given in the fall and spring to check the aptitude and achievement of each student.

S P O R T S

INTRAMURALS	WHEN TO REPORT	ACTIVITIES
GIRLS (G.A.A.)	Announced in Daily Bulletin, or posted on bulletin board next to Mr. Smith's office.	Bowling, swimming, volleyball, basketball, softball. Open to all girls at Lew Wallace. One day a week, after school, for each sport. Must have or be in the process of earning 100 pts. at some sport before initiation to G.A.A.
BOYS	Starts week of September 9th	Touch football, swimming, softball, cross country, volleyball, basketball, track. Teams made up from Boys' homerooms.
VARSITY-BOYS	WHEN TO REPORT	ELIGIBILITY
BASKETBALL	October 1 October 10	Passing in four subjects
BASEBALL	February 15	Passing in four subjects
CROSS COUNTRY	August 15	Passing in four subjects
FOOTBALL	August 15	Passing in four subjects
GOLF	Last week in March*	Passing in four subjects
SWIMMING	October 15	Passing in four subjects
TENNIS	August 15	Passing in four subjects
TRACK	February 15	Passing in four subjects
WRESTLING	November 1*	Passing in four subjects

* TO BE ANNOUNCED IN DAILY BULLETIN

P.T.A. OFFICERS FOR 1968-69

PRESIDENT Mr. Melvin Hanson
1125 East 45th Avenue
884-7748

1st VICE-PRESIDENT Mr. Sam Pollak

2nd VICE-PRESIDENT Mrs. Richard Thomas
3385 Massachusetts Street
884-5222

3rd VICE-PRESIDENT Mrs. Paul Marrone
5085 Jefferson Street
884-2939

RECORDING SECRETARY Mrs. Helen Kaczmariski
4836 Maryland Place
884-7922

CORRESPONDING SECRETARY Mrs. Charlotte Mesick
1028 East 49th Avenue
884-8512

TREASURER Mrs. Richard Coler
3971 Louisiana Street

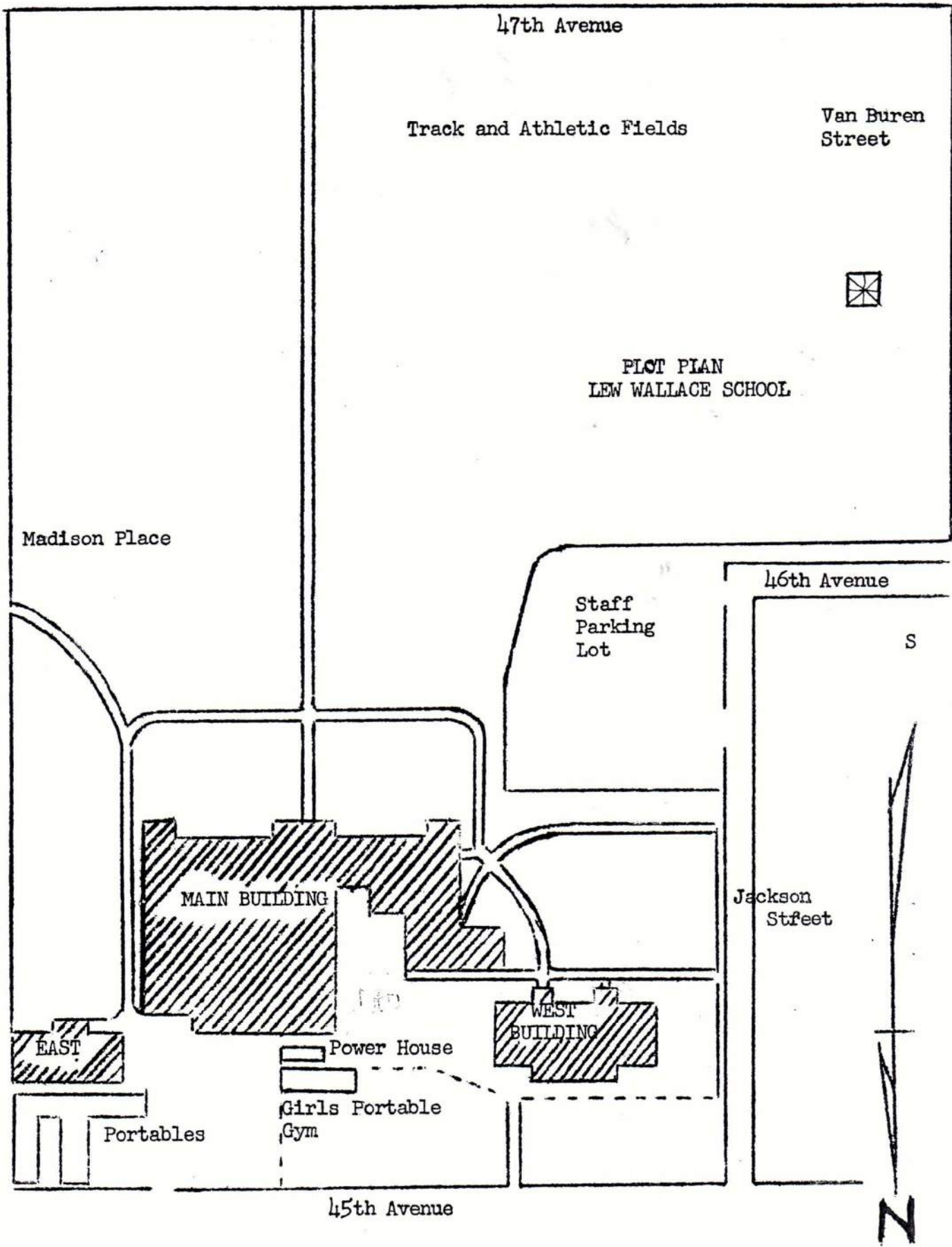
SUMMER SCHOOL

The eight-week summer school session begins the week following the close of the regular school year and will have some courses available to the September in-coming freshmen.

Opportunities are available for students to earn advanced credit in such half-unit courses as personal typing, clothing, art, developmental reading and industrial arts.

In order to earn high school credit, students are required to attend summer classes forty days, at two hours a day for each half unit course.

Summer school registration is scheduled for Monday, June 17, between the hours of 10:00 A.M. and 11:30 A.M., in the cafeteria. A two dollar fee must be paid at the time of registration.



47th Avenue

Track and Athletic Fields

Van Buren Street



PLAT PLAN
LEW WALLACE SCHOOL

Madison Place

Staff
Parking
Lot

46th Avenue

S

MAIN BUILDING

Jackson Street

EAST

WEST BUILDING

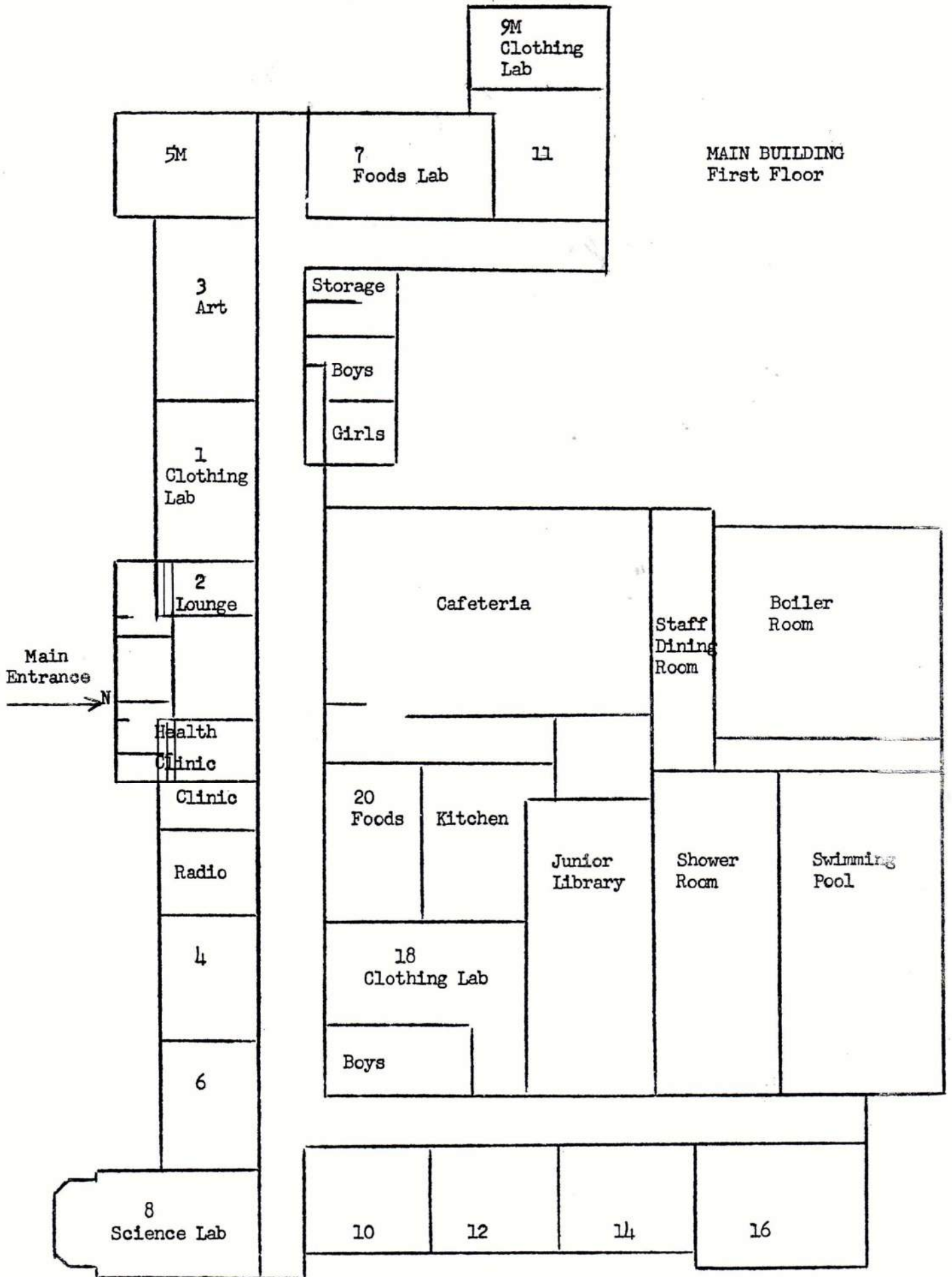
Power House

Portables

Girls Portable
Gym

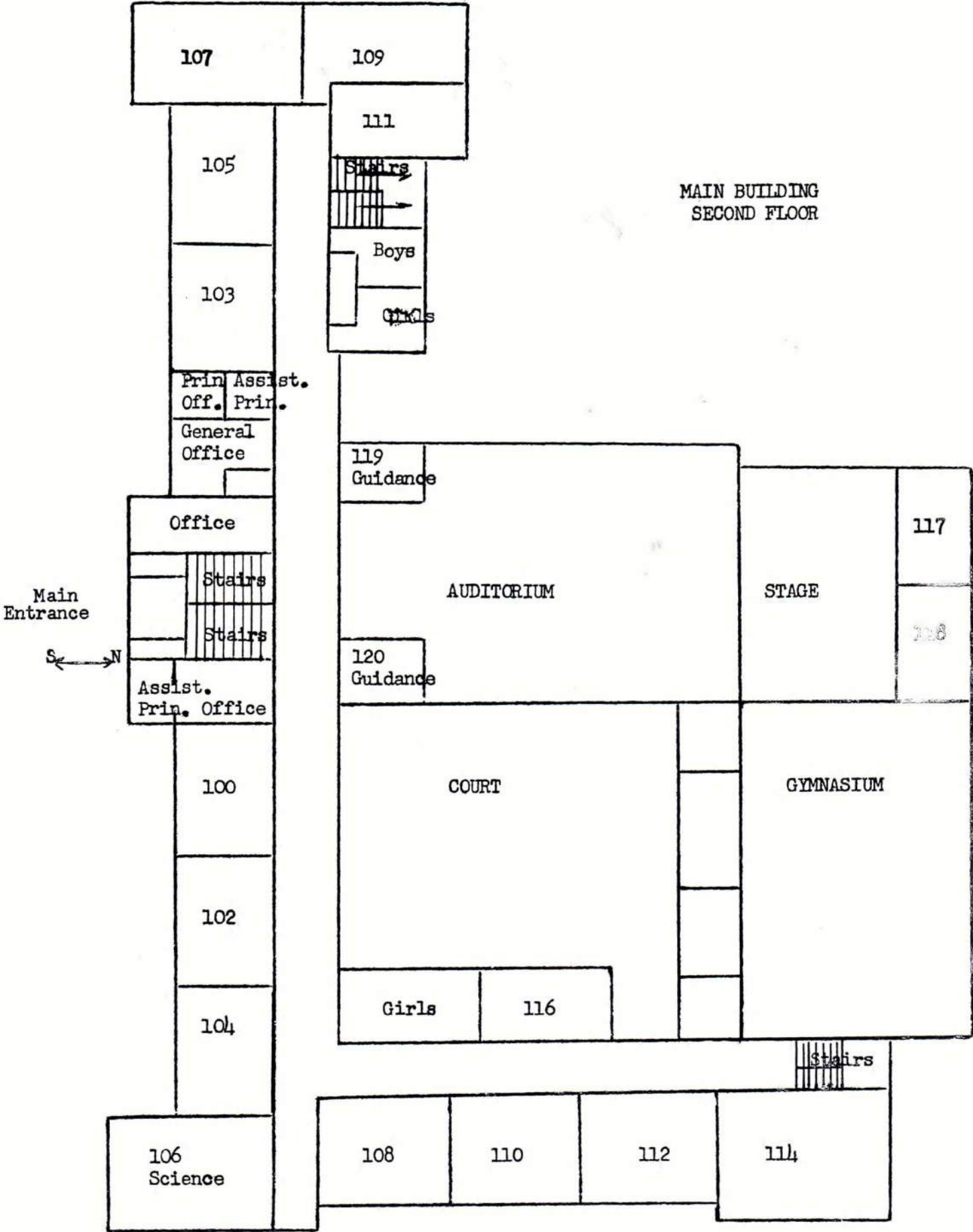
45th Avenue

N

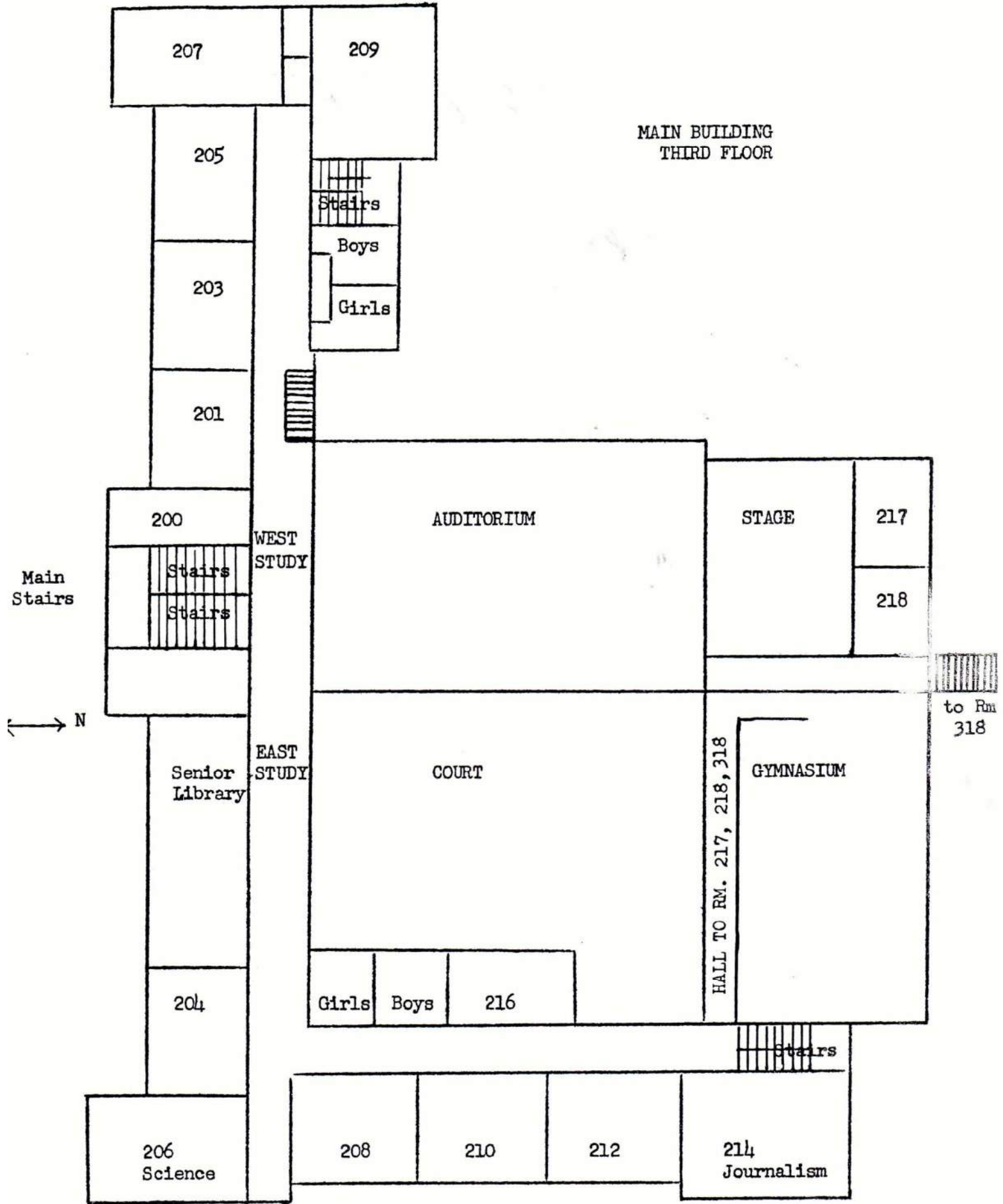


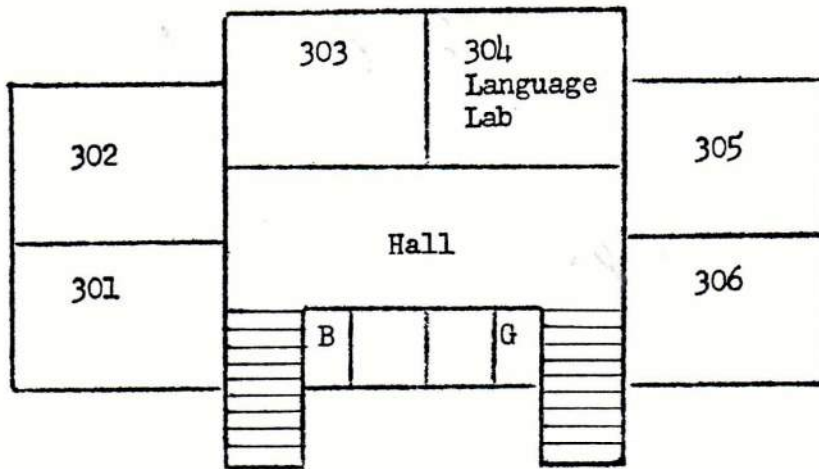
MAIN BUILDING
First Floor

MAIN BUILDING
SECOND FLOOR

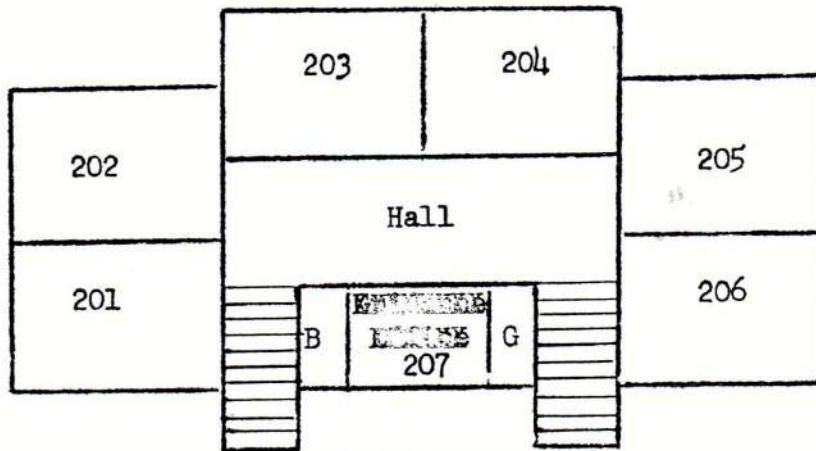


MAIN BUILDING
THIRD FLOOR

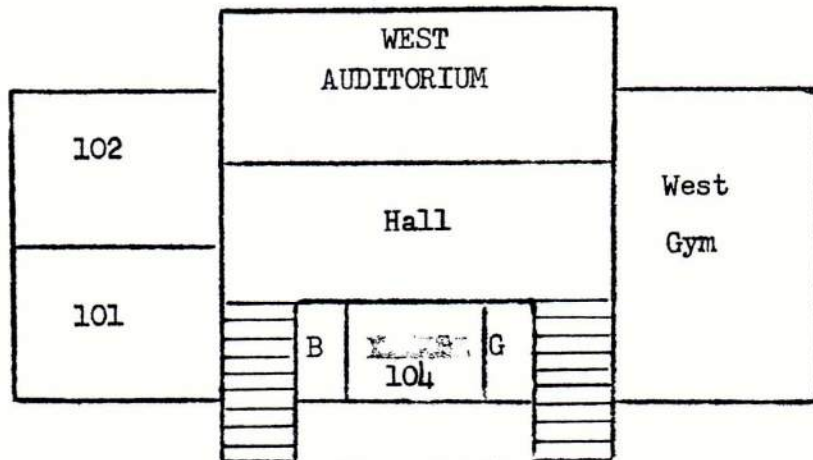




THIRD FLOOR



SECOND FLOOR



FIRST FLOOR

WEST BUILDING

